



4 Smithfield House, 1 The Square
£1,500 pcm

mcFarlane
property.com



4 Smithfield House

Aldbourne, Marlborough

Nestled amidst the scenic charm of a quaint village, this stunning 3-bedroom detached house stands as a testament to sophisticated living.

Upon entering, one is welcomed by a large modern kitchen/diner, meticulously designed to be the heart of the home. Adorned with stylish finishes and state-of-the-art appliances. The spacious living room, featuring an electric fire set within a traditional wood surround.

Convenience meets charm with courtyard parking available, offering a secure and easily accessible space for vehicles.

As an added bonus, the property boasts picturesque views overlooking the tranquil village pond,

In summary, this 3-bedroom detached house offers a harmonious blend of modern comfort, classic charm, and scenic serenity. With its inviting living spaces, tasteful finishes, and convenient location, it presents a unique opportunity for discerning renters seeking a place to call home.

Rent: £1500,00 per calendar month

Deposit: £1730.76

Holding Fee: £346.15

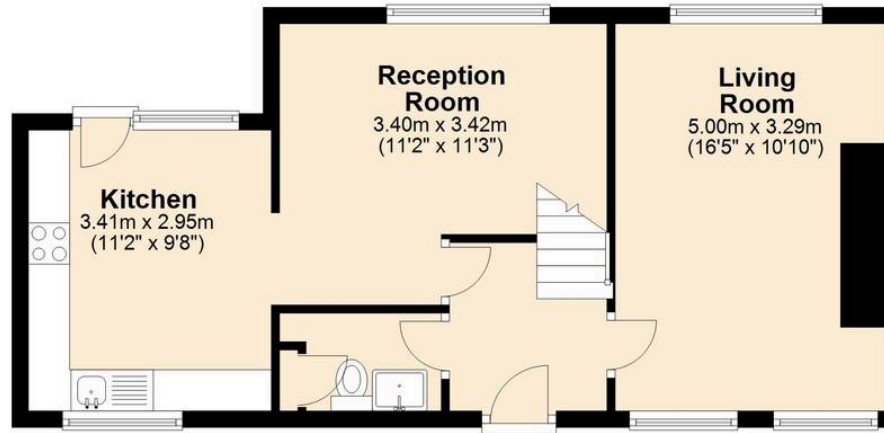
Council Tax: Band C

Available: From 22nd May 2026



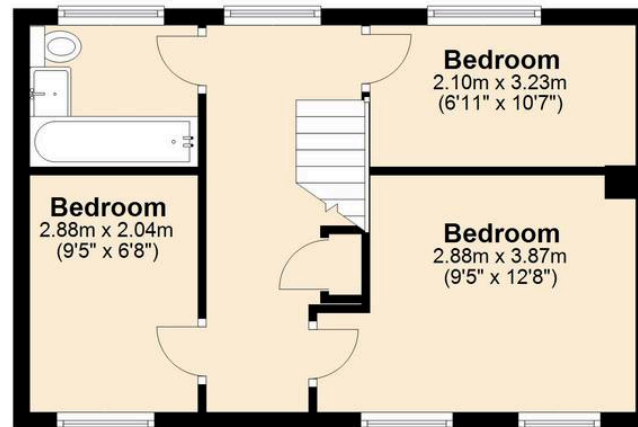
Ground Floor

Approx. 43.1 sq. metres (464.1 sq. feet)



First Floor

Approx. 35.8 sq. metres (385.6 sq. feet)



Total area: approx. 78.9 sq. metres (849.7 sq. feet)

McFarlane Sales & Lettings

McFarlane Sales & Letting, 106 High Street – SN8 1LT

01672 514380 • marlborough@mcfarlaneproperty.com • www.mcfarlaneproperty.com/

mcfarlane
property.com