



**14 St Edmunds Road, Canterbury, Kent, CT1 2PD**

**£1,490 PCM**

- STUDENT HOUSE
- FURNISHED PROPERTY
- DOUBLE BEDS
- 1 BATHROOMS
- COURTYARD GARDEN
- BILLS INCLUDED
- 2 BEDROOMS
- 1 RECEPTION ROOMS
- PARKING PERMIT REQUIRED

# 14 St Edmunds Road, Kent CT1 2PD

STUDENT PROPERTY 2025/2026

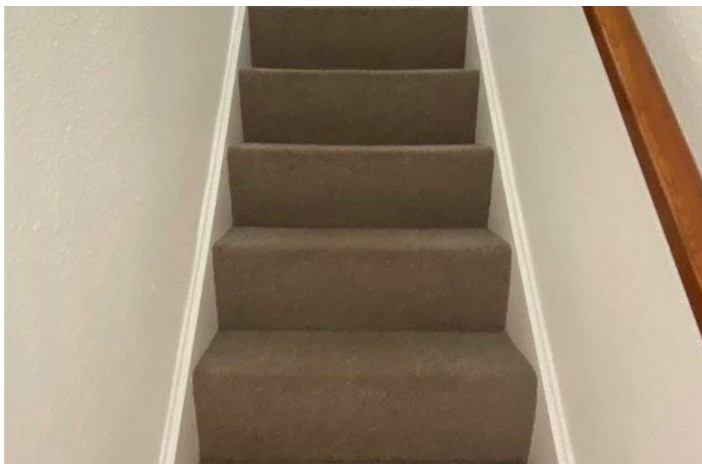
This mid terrace two bedroom house is ideally located on a quiet characterful street in the city centre, with all its shops, restaurants, bars and clubs a few minutes walk from the High Street. The front door leads into a fully fitted kitchen and there is also a good size lounge with French doors leading to the pretty walled courtyard garden. Upstairs is a large double bedroom to the front of the house, a smaller sized double bedroom to the rear and Shower room with large shower cubicle. Situated in a great location there really isn't a better time to rent this ideally located two bedroom property. Parking is not included with the tenancy

Please call today for a viewing.

Council Tax Band for property is - C

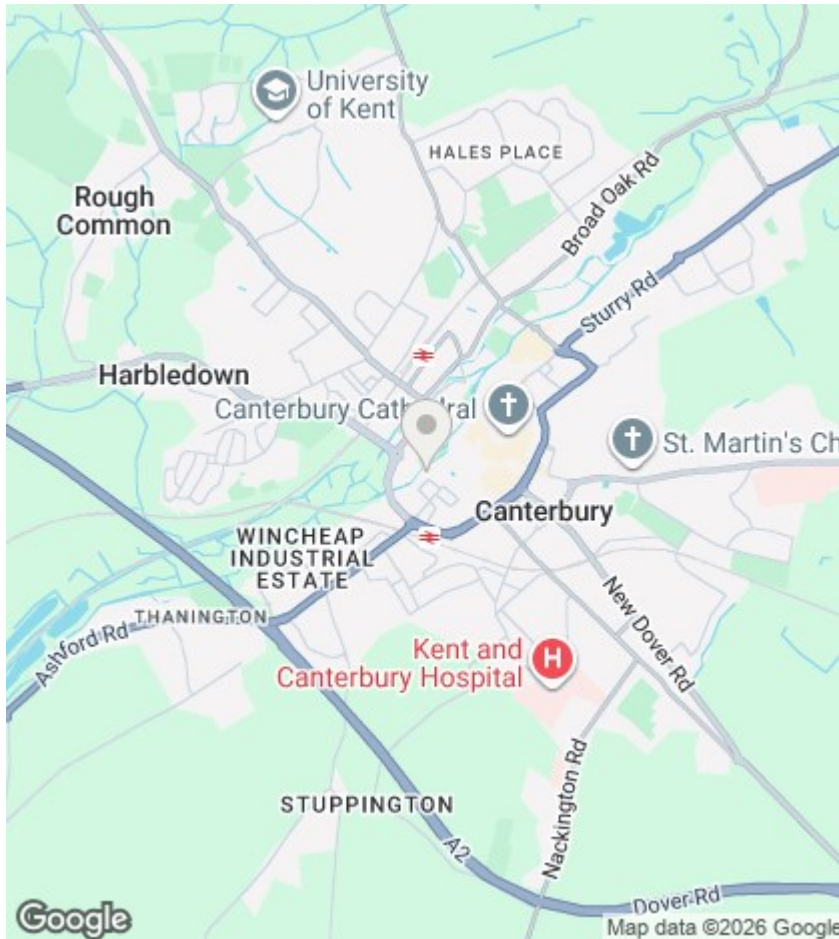


Council Tax Band: C









## Directions

## Viewings

Viewings by arrangement only. Call 01227788088 to make an appointment.

## EPC Rating:

D

Energy Efficiency Rating		
	Current	Potential
Very energy efficient - lower running costs		
(92 plus) <b>A</b>		
(81-91) <b>B</b>		
(69-80) <b>C</b>		
(55-68) <b>D</b>	59	60
(39-54) <b>E</b>		
(21-38) <b>F</b>		
(1-20) <b>G</b>		
Not energy efficient - higher running costs		
England & Wales	EU Directive 2002/91/EC	

