



Knights Road, Birmingham

burchell  
edwards



## Property Description

Charming 2-Bedroom Corner Plot Home - Perfect for Modern Living!

Discover this delightful 2-bedroom property situated on a desirable corner plot, boasting a large front garden and driveway. The rear garden is slabbed for easy maintenance and outdoor enjoyment.

Inside, you'll find two generously sized bedrooms and a good-sized family bathroom. Conveniently located close to excellent schools, supermarkets, and great transport links, this home offers both comfort and convenience.

Don't miss the opportunity to make this well-positioned property your own!

## Entrance Porch

Door to front elevation and door into:

## Lounge

Double glazed window to front elevation, central heating radiator, electric fire and storage.

## Kitchen

Double glazed window and door to rear elevation, a range of wall and base units with work surface over incorporating a sink with drainer unit, gas hob, extractor, space for appliances and tiled flooring.



## Landing

Double glazed window to front elevation, central heating radiator and all doors off.

## Bedroom One

Double glazed window to rear elevation, central heating radiator and two built in storage cupboards.

## Bedroom Two

Double glazed window to front elevation and central heating radiator.

## Bathroom

Double glazed window to front elevation, W.C, wash hand basin, shower bath, central heating radiator, tiling to walls and cupboard housing central heating boiler.

## Loft Space

Partially boarded.

## Rear Garden

Patio area, concrete area and side access to frontage.

## Front Garden

Driveway providing off road parking.

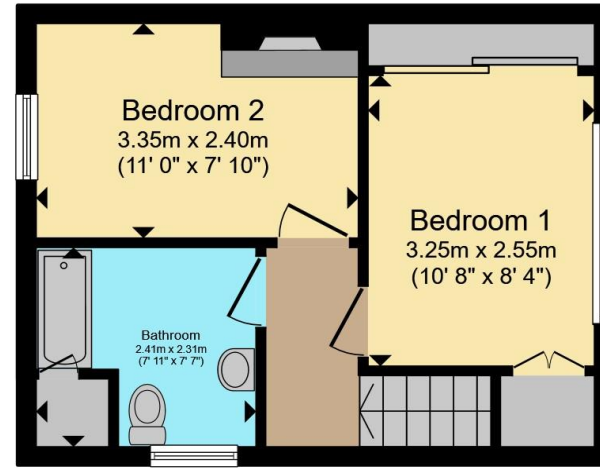








**Ground Floor**



**First Floor**

Total floor area 60.1 m<sup>2</sup> (646 sq.ft.) approx

This floor plan is for illustrative purposes only. It is not drawn to scale. Any measurements, floor areas (including any total floor area), openings and orientation are approximate. No details are guaranteed, they cannot be relied upon for any purpose and they do not form part of any agreement. No liability is taken for any error, omission or misstatement. A party must rely upon its own inspection(s). Powered by [www.propertybox.io](http://www.propertybox.io)



To view this property please contact Burchell Edwards on

**T 0121 733 3553**  
**E [shirley@burchelledwards.co.uk](mailto:shirley@burchelledwards.co.uk)**

183 Stratford Road Shirley  
SOLIHULL B90 3AU

EPC Rating: C Council Tax  
Band: C

Tenure: Freehold

**view this property online [burchelledwards.co.uk/Property/SHI209133](http://burchelledwards.co.uk/Property/SHI209133)**



1. MONEY LAUNDERING REGULATIONS Intending purchasers will be asked to produce identification documentation at a later stage and we would ask for your co-operation in order that there will be no delay in agreeing the sale. 2. These particulars do not constitute part or all of an offer or contract. 3. The measurements indicated are supplied for guidance only and as such must be considered incorrect. Potential buyers are advised to recheck measurements before committing to any expense. 4. We have not tested any apparatus, equipment, fixtures, fittings or services and it is in the buyers interest to check the working condition of any appliances.

Burchell Edwards is a trading name of Connells Residential which is registered in England and Wales under company number 1489613, Registered Office is Cumbria House, 16-20 Hockliffe Street, Leighton Buzzard, Bedfordshire, LU7 1GN. VAT Registration Number is 500 2481 05.

**See all our properties at [www.burchelledwards.co.uk](http://www.burchelledwards.co.uk) | [www.rightmove.co.uk](http://www.rightmove.co.uk) | [www.zoopla.co.uk](http://www.zoopla.co.uk)**

Property Ref: SHI209133 - 0002