



The Grove, Woodside Park, Woodside, Luton, Bedfordshire, LU1 4LR

£140,000

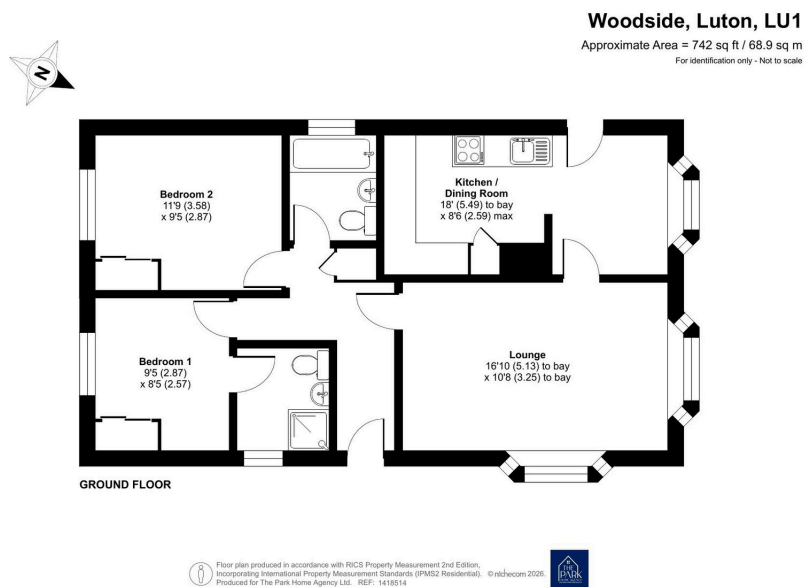
🛏️ 2 🚿 1 🚗 1



- Detached Park Home Bungalow
- Two Double Bedrooms(36'x20')
- Ensuite and Guest Bathroom
- Built in Wardrobes In Both Bedrooms
- Generous Garden Plot
- Sought After Residential Park
- Dual Aspect Lounge
- Kitchen/Dining Room
- No Onward Chain
- No Stamp Duty To Pay



A two bedroom park home bungalow(36'x20') built by Stately Albion which is located on a generous garden plot within this sought after residential park close to Luton. This home has a separate entrance hall, a spacious, dual aspect lounge with fireplace, a kitchen/dining room of which the kitchen will require some updating, two double bedrooms, both with built in wardrobes and an ensuite to the master bedroom and a further guest bathroom. There are generous, enclosed garden areas to all sides of the home which are mainly laid to lawn with flower beds and borders, a patio area with pergola over and residents parking close to the home. The home is offered with no onward chain and will be popular with buyers.



01793 230185
 sales@theparkhomeagency.co.uk

Agents Notes: All measurements are approximate and quoted in metric with imperial equivalents and for general guidance only and whilst every attempt has been made to ensure accuracy, they must not be relied on. The fixtures, fittings and appliances referred to have not been tested and therefore no guarantee can be given that they are in working order. Internal photographs are reproduced for general information and it must not be inferred that any item shown is included with the property. For a free valuation, contact the numbers listed on the brochure