



31 Draycott Avenue | | LONDON | SW3 3BS

£2,562 Per month

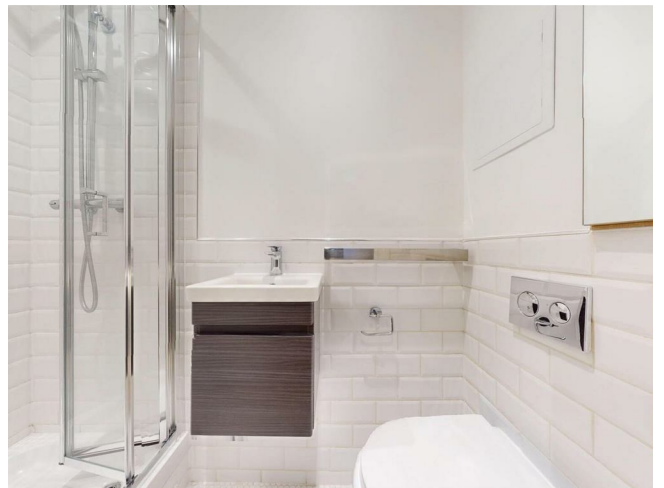
**ESON2**  
REAL ESTATE

## Key features

- Open-Plan Living
- High-End Kitchen
- Luxurious Bathroom
- Smart Design
- On-site Gym
- Workspace Facilities
- 24/7 Security

## Description

Renovated studio in Chelsea with modern interiors, open-plan layout, and abundant natural light. Includes a premium kitchen, built-in storage, luxury bathroom, on-site gym, co-working space, 24/7 security, and excellent transport links.



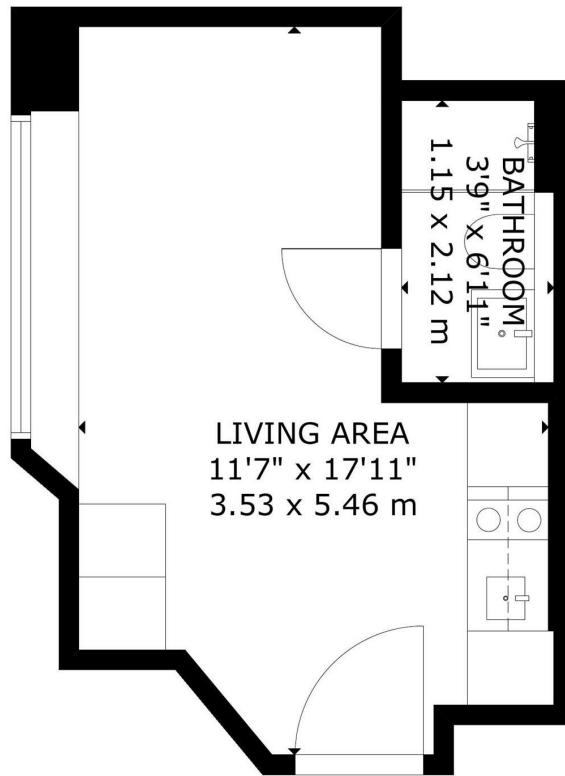
## Directions



Step into this freshly renovated Chelsea studio SW3, where modern style meets smart, flexible living. The open-plan layout and versatile living-sleeping area create a comfortable, functional space with contemporary interiors and thoughtful detailing throughout.



# Floor plans

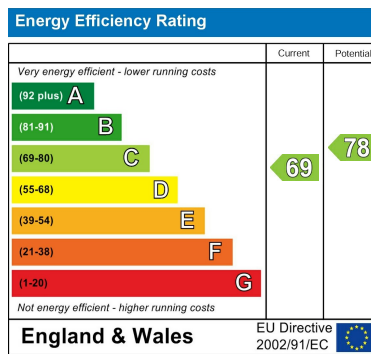


LIVING AREA  
11'7" x 17'11"  
3.53 x 5.46 m

BATHROOM  
3'9" x 6'11"  
1.15 x 2.12 m

GROSS INTERNAL AREA  
TOTAL: 19 m<sup>2</sup>/202 sq ft  
LOWER GROUND FLOOR: 19 m<sup>2</sup>/202 sq ft  
SIZE AND DIMENSIONS ARE APPROXIMATE, ACTUAL MAY VARY

LOWER GROUND FLOOR



Council Tax Band H    EPC Rating C



301 Michelin House 81 Fulham road  
London  
Greater London  
SW3 6RD  
07920 257649  
fayeel@eson2.co.uk  
www.eson2.co.uk