



**Ferndale Road, SW4**

**£625,000**

**Dexters**



## Ferndale Road, SW4

A well-presented and spacious two double bedroom garden flat, ideally located on Ferndale Road. The property benefits from a private garden with a studio, is offered chain-free, and comes with a share of the freehold.

The property features a spacious open-plan kitchen, living, and dining area, enhanced by a large bay window that fills the room with natural light. The kitchen has direct access to the garden. The bathroom is centrally positioned, while both double bedrooms are located towards the rear of the property. The principal bedroom overlooks the garden. The hallway benefits from built-in storage, adding practicality to the space. At the end of the garden, there is a separate studio, providing additional versatility.

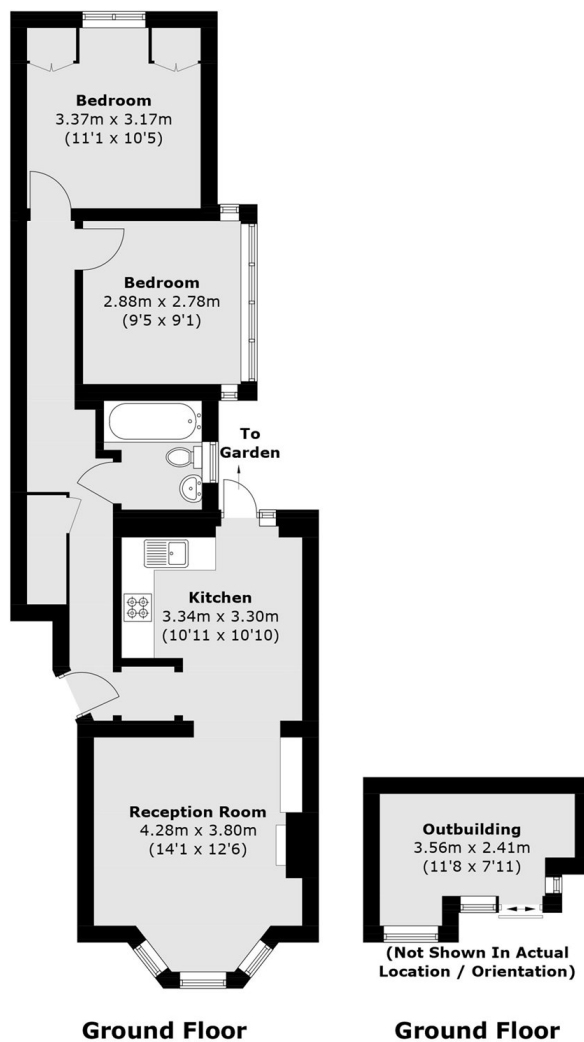
Situated at the Clapham end of Ferndale Road, the property is located a very short walk from the many shops, restaurants and bars of Clapham High Street & Clapham Old Town, along with Clapham North Underground (Northern Line), Overground & Brixton Underground (Victoria Line) Stations.

### Features

- Two Double Bedrooms
- Ground Floor
- Open Plan Living / Kitchen
- Private Garden
- Garden Studio
- Share of Freehold



# Ferndale Road, London, SW4



Total area (approx.): 63.0 sq. m (678.1 sq. ft)  
Outbuilding: 7.0 sq. m (75.3 sq. ft)