



Guide Price
£300,000

Freehold

3x  1x  1x 

**Gadby Road,
Sittingbourne, Kent,
ME10**

OVER 60?

Secure this property
for up to **59% less!**

Wards
Helping you move forwards



Main features

- Close to local schools and shops
- Garage and off road parking
- Highly sought after Grove Park location
- Extended allowing more room to entertain family and friends
- Perfect home for a growing family

Accommodation

GROUND FLOOR

- Entrance Hall
- Cloakroom
- Lounge: 17'0 x 10'9 (5.19m x 3.28m)
- Dining Area: 9'7 x 7'2 (2.92m x 2.19m)
- Kitchen: 14'5 x 8'2 (4.40m x 2.49m)

FIRST FLOOR

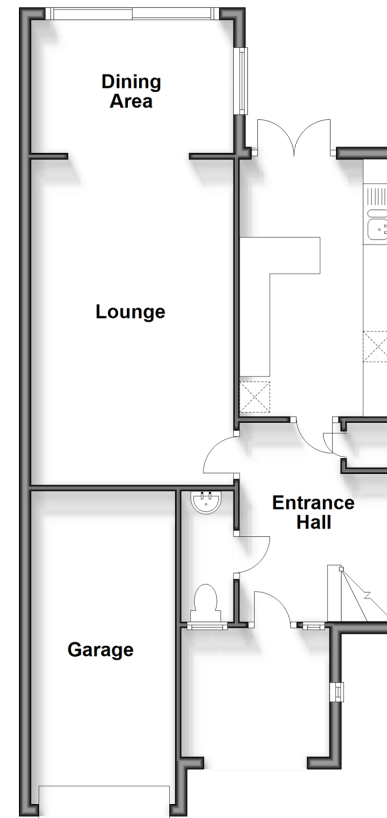
- Landing
- Bedroom 1: 14'4 x 11'1 (4.37m x 3.38m)
- Bedroom 2 With Balcony: 11'4 x 8'0 (3.46m x 2.44m)
- Bedroom 3: 12'9 x 8'0 (3.89m x 2.44m)
- Shower Room

OUTSIDE

- Front Garden
- Garage
- Off Road Parking
- Rear Garden

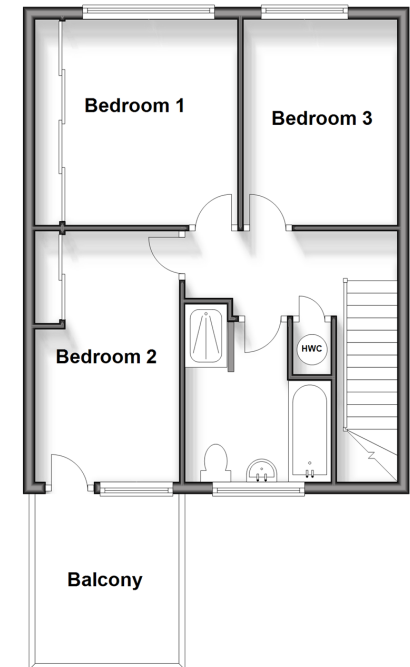
Ground Floor

Approx. 60.3 sq. metres (649.1 sq. feet)



First Floor

Approx. 45.5 sq. metres (489.9 sq. feet)



Call Sittingbourne - 01795 427272 ■ wardsof Kent.co.uk

- Legal advice should be taken to verify fixtures/fittings, planning, alterations and/or lease details
- Appliances & services are untested, dimensions are approximate and floor plans are not to scale
- Through a Homewise Home For Life Plan people aged 60+ can secure this property for up to 50% less, by purchasing a Lifetime Lease.



11738518/20251125/JS/TB