



move
Property Sales & Lettings

Stanwick Drive, Cheltenham
£315,000



Stanwick Drive

Cheltenham

NO ONWARD CHAIN. Modern three-bedroom semi in Wymans Brook. Extended kitchen, two receptions, garage, close to schools and amenities. Ideal for first-time buyers or families. Early viewing advised.

Council Tax band: C

Tenure: Freehold

EPC Energy Efficiency Rating: C

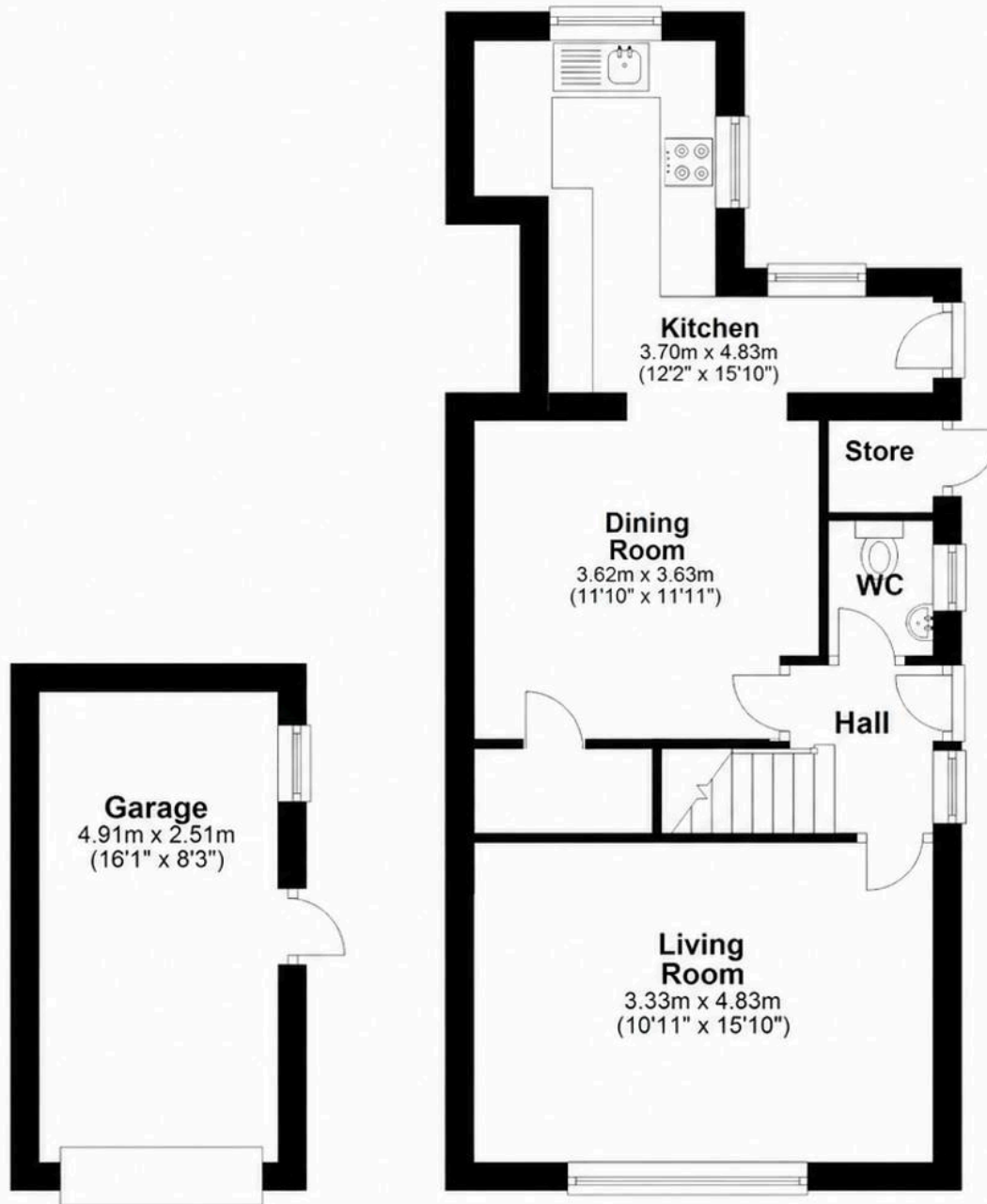
EPC Environmental Impact Rating: D

- Three Bedroom Semi Detached
- NO ONWARD CHAIN
- Ideal For First Time Buyers
- Two Reception Rooms
- Extended Kitchen
- Recently Modernised Throughout
- Popular Wymans Brook Location
- Garage



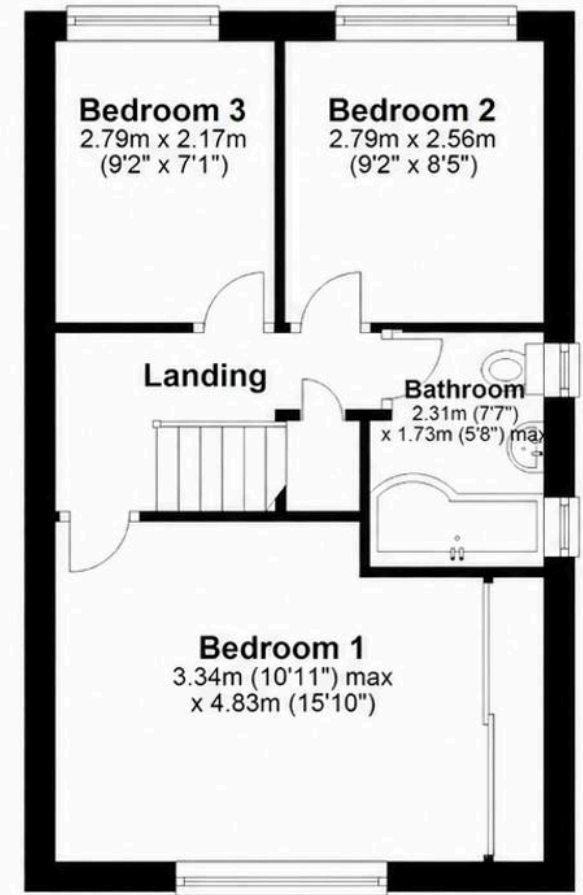
Ground Floor

Approx. 61.4 sq. metres (660.8 sq. feet)



First Floor

Approx. 39.0 sq. metres (420.1 sq. feet)



Total area: approx. 100.4 sq. metres (1080.9 sq. feet)





Move Estate Agents Cheltenham

1 The Clarence Clarence Parade, Cheltenham - GL50 3NY

01242 257333

cheltenham@move.uk.net

move.uk.net/

move
Property Sales & Lettings