



95 King Edward Street, Markinch – KY7 6AW

Glenrothes

Offers Over £89,995







**home sweet home**  
estate agents  
your local property experts



## 95 King Edward Street

Markinch, Glenrothes

New for sale a Stunning Modernised Main Door Upper Cottage style Flat in sought after location close to train station & local amenities. Award Winning Home Sweet Home Estate Agents Fife are delighted to present to the market the perfect starter home comprising Entrance with Galleried Landing - Spacious Lounge - Modern Fitted Kitchen - Bright Double Bedroom - Modern Shower-Room. Benefitting from DG- GCH - EPC C - HOME REPORT £92,000. Externally large double driveway, side garden with shed, lawned rear garden. Early Viewing Highly Recommended. Council Tax band: A

Tenure: Freehold

EPC Energy Efficiency Rating: C

EPC Environmental Impact Rating: C

- STUNNING MAIN DOOR UPPER FLAT
- DG- GCH - EPC C - HOME REPORT £92,000
- SPACIOUS LOUNGE
- MODERN FITTED KITCHEN
- GENEROUS DOUBLE BEDROOM
- DOUBLE DRIVEWAY & GARDENS
- VIEWING HIGHLY RECOMMENDED
- FEATURE STAIRCASE/ LANDING
- PART FLOORED LOFT
- PERFECT STARTER HOME!



**home sweet home**  
estate agents  
your local property experts



**GARDEN**

**DRIVEWAY**


4 Parking Spaces


double drive

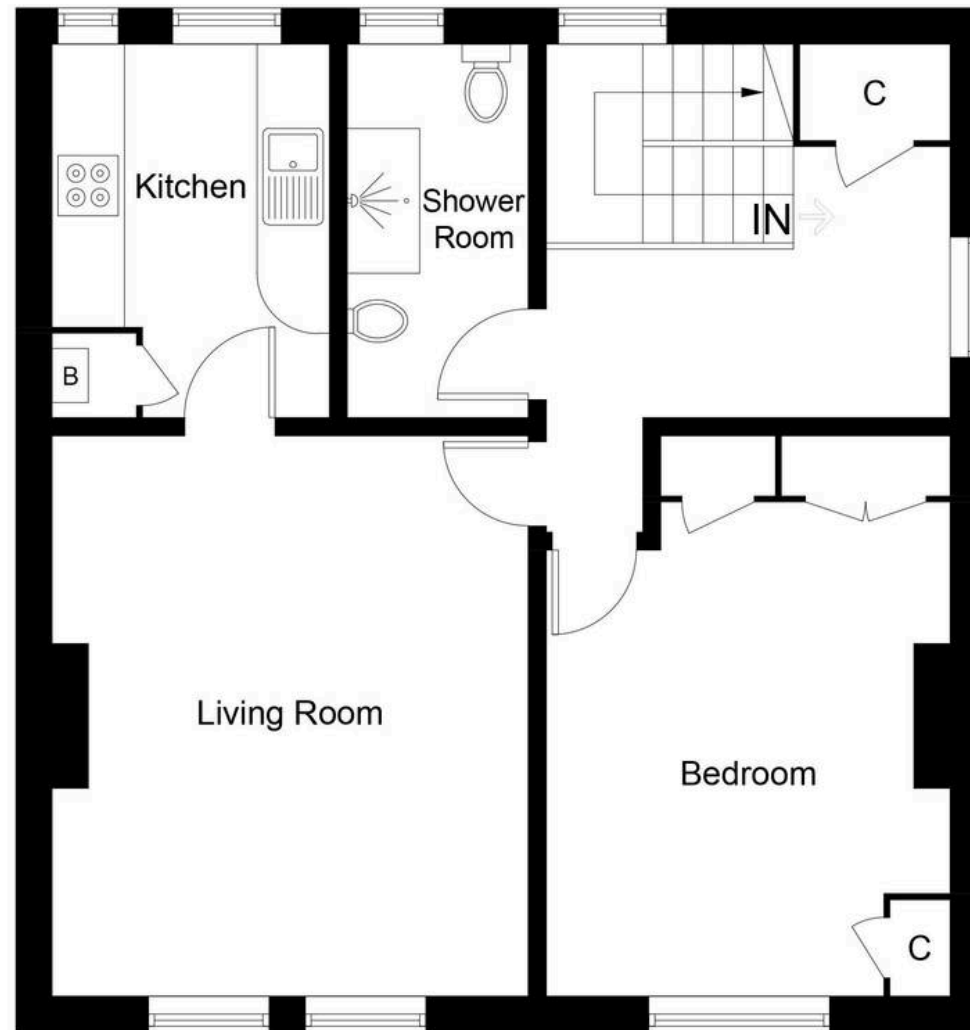






Energy Efficiency Rating		
	Current	Potential
Very energy efficient - lower running costs		
(92+) <b>A</b>		
(81-91) <b>B</b>		
(69-80) <b>C</b>	76	76
(55-68) <b>D</b>		
(39-54) <b>E</b>		
(21-38) <b>F</b>		
(1-20) <b>G</b>		
Not energy efficient - higher running costs		
England, Scotland & Wales <small>EU Directive 2002/91/EC</small> 		

Environmental Impact (CO <sub>2</sub> ) Rating		
	Current	Potential
Very environmentally friendly - lower CO <sub>2</sub> emissions		
(92+) <b>A</b>		
(81-91) <b>B</b>		
(69-80) <b>C</b>	79	79
(55-68) <b>D</b>		
(39-54) <b>E</b>		
(21-38) <b>F</b>		
(1-20) <b>G</b>		
Not environmentally friendly - higher CO <sub>2</sub> emissions		
England, Scotland & Wales <small>EU Directive 2002/91/EC</small> 		



## First Floor

Illustration for identification purposes only, measurements are approximate, not to scale. Fourlabs.co © (ID1270864)



**home sweet home**  
**estate agents**  
your local property experts