



It'll Do, The Street, Erpingham, Norwich, NR11 7QB

welcome to

It'll Do, The Street, Erpingham, Norwich

This is a 2 Bedroom detached bungalow offered with No Onward Chain in the sought after village of Erpingham. This property is deceptively spacious and enjoys 2 large Reception Rooms, updated Shower Room and outside has ample parking, gardens and double Garage.



Description

Offered with No Onward Chain don't miss this deceptively spacious detached bungalow set in the highly sought after village of Erpingham. This property enjoys 2 Bedrooms, 2 large Reception Rooms and an updated Shower Room. The property has a large driveway, double Garage (part used as a store) and generous gardens. This property has fantastic scope for updating (stpp) and viewings is highly recommended to appreciate the space this property has to offer.

Entrance Porch

uPVC front door opening into the porch, wood effect floor, window and door to Inner Hall.

Inner Hall

Doors to Bedrooms, Kitchen. Bathroom & Dining Room. Two radiators & loft access, mirror-fronted storage & double cupboard.

Bedroom One

Fitted wardrobe and bridge over bed, double glazed window & radiator.

Bedroom Two

Double glazed window, radiator, mirror-fronted wardrobe.

Shower Room

Updated to include corner shower, low level WC, wash hand basin vanity unit, heated towel rail, double glazed window, tiled floor and spotlights.

Kitchen

Fitted with a range of wall and base level units, work surface with tiled splashback and circular sink, electric hob, electric oven, plumbing for washing machine and houses central heating boiler. Double glazed window to the front aspect.

Dining Room

Radiator, double glazed sliding doors to outside & arch to Lounge.

Lounge

Double glazed window to the front aspect, single glazed window to the side aspect, LPG gas fire with surround, TV point & radiator.

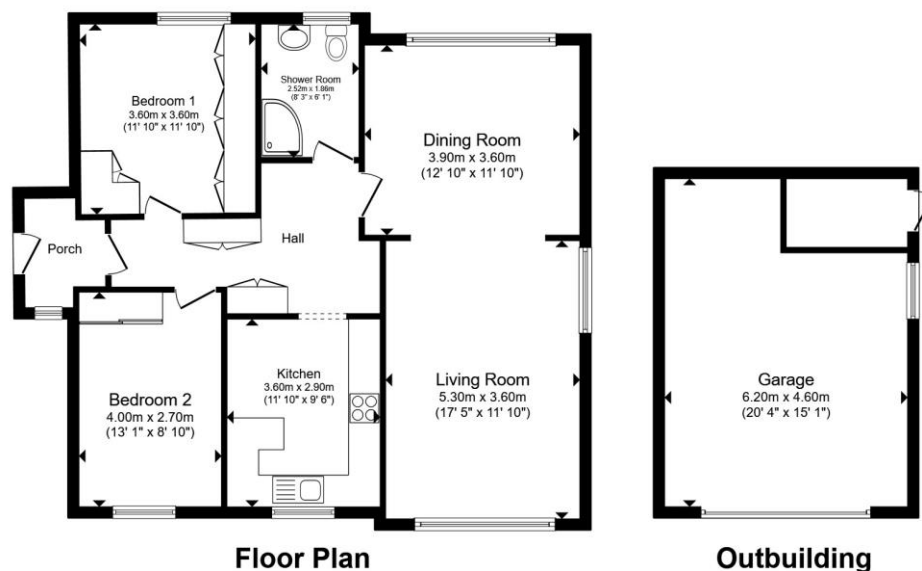
Outside

To the front of the property is a lawned garden with well-stocked borders, the driveway proceeds along the side of the bungalow leading to a double garage with up and over doors (please note the garage has been partitioned in the back corner into an outside store accessed externally).

The rear garden has a patio terrace with steps down to the main garden which is laid to lawn with planted shrubs, plant borders and summerhouse.

Location

Erpingham is a small, historic village in north Norfolk, about 3 miles north of the sought after Historic Market town of Aylsham. Set in quiet rural countryside, it has Anglo-Saxon origins and is best known as the birthplace of Sir Thomas Erpingham, a commander at the Battle of Agincourt. The village features the 14th-century Church of St Mary, a traditional pub, and a close-knit community, giving it a peaceful, classic Norfolk village character.



Total floor area 116.2 m² (1,251 sq.ft.) approx
This floor plan is for illustrative purposes only. It is not drawn to scale. Any measurements, floor areas (including any total floor area), openings and orientation are approximate. No details are guaranteed, they cannot be relied upon for any purpose and they do not form part of any agreement. No liability is taken for any error, omission or misstatement. A party must rely upon its own inspection(s). Powered by www.propertybox.io

william
h brown

view this property online williamhbrown.co.uk/Property/AYS110157



welcome to

It'll Do, The Street, Erpingham, Norwich

- Deceptively Spacious Detached Bungalow
- 2 Bedrooms + 2 Reception Rooms
- No Onward Chain
- Double Garage, Ample Parking
- Superb Scope to Update
- Village Location

Tenure: Freehold EPC Rating: F

Council Tax Band: D

£325,000



Please note the marker reflects the postcode not the actual property

view this property online williamhbrown.co.uk/Property/AYS110157



Property Ref:
AYS110157 - 0002

1. MONEY LAUNDERING REGULATIONS Intending purchasers will be asked to produce identification documentation at a later stage and we would ask for your co-operation in order that there is no delay in agreeing the sale. 2. These particulars do not constitute part or all of an offer or contract. 3. The measurements indicated are supplied for guidance only and as such must be considered incorrect. Potential buyers are advised to recheck measurements before committing to any expense. 4. We have not tested any apparatus, equipment, fixtures or services and it is in the buyers interest to check the working condition of any appliances. 5. Where an EPC, or a Home Report (Scotland only) is held for this property, it is available for inspection at the branch by appointment. If you require a printed version of a Home Report, you will need to pay a reasonable production charge reflecting printing and other costs. 6. We are not able to offer an opinion either written or verbal on the content of these reports and this must be obtained from your legal representative. 7. Whilst we take care in preparing these reports, a buyer should ensure that his/her legal representative confirms as soon as possible all matters relating to title including the extent and boundaries of the property and other important matters before exchange of contracts.

William H Brown is a trading name of Sequence (UK) Limited which is registered in England and Wales under company number 4268443, Registered Office is Cumbria House, 16-20 Hockliffe Street, Leighton Buzzard, Bedfordshire, LU7 1GN. VAT Registration Number is 500 2481 05.



william h brown



01263 735252



Aylsham@williamhbrown.co.uk



23 Market Place, AYLSHAM, NORWICH,
Norfolk, NR11 6EL



williamhbrown.co.uk