



## Chadwick Place

Surbiton, KT6 5RZ

Guide Price

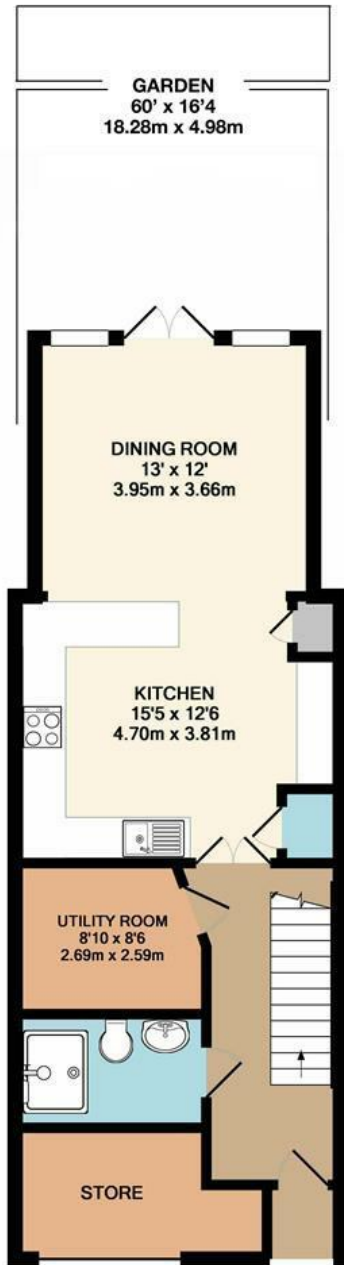
£1,115,000

A stunning extended four bedroom town house within the prestigious St James Development. The property has been tastefully extended on the ground floor and beautifully modernised to create a brilliant kitchen / dining / family room with bi-folding doors opening out onto the spacious garden. The accommodation is over 3 floors and includes 4 bedrooms, the primary bedroom with ensuite, two further bathrooms and a spacious L-shaped living room providing an ideal work from home space / children's play area. Further benefits include utility room, underfloor heating in the kitchen, downstairs shower room and family bathroom; off street parking and close proximity to Surbiton town centre, mainline train station and the River Thames.

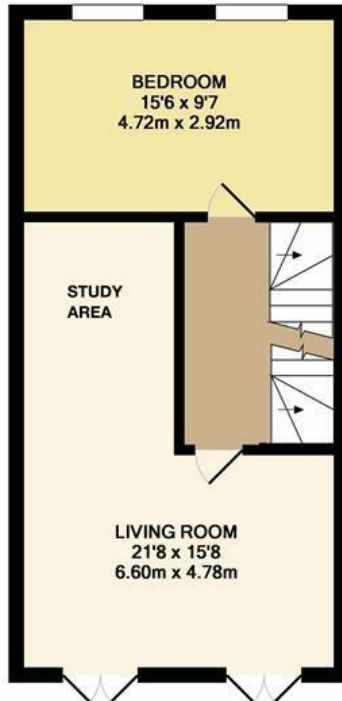
Material Info: Water / Electricity / Sewerage: Mains. Heating: Gas Mains. Broadband: Fibre (FTTC).

- Prestigious St James Development
- Extended Terrace Town House
- Bi-folding Doors Opening onto a Spacious Garden
- Utility room
- Close To Surbiton Town Centre, Mainline Station and the River Thames
- Overlooking the Main Square
- Kitchen / Dining / Family Room
- Four Bedrooms
- Off Street Parking
- No Onward Chain

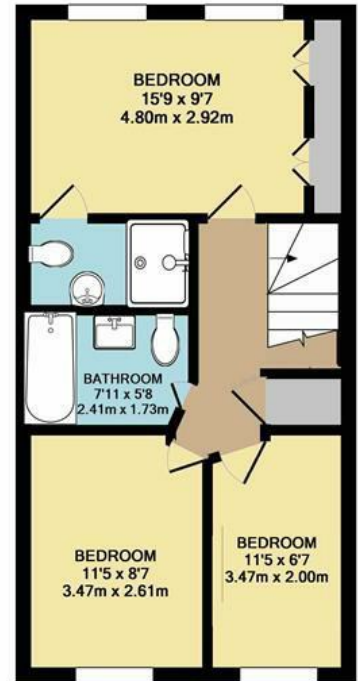
# Floor Plan



GROUND FLOOR



FIRST FLOOR

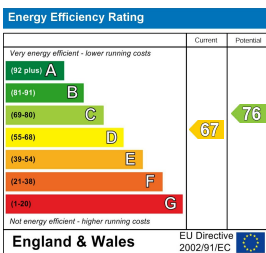


SECOND FLOOR

## CHADWICK PLACE, LONG DITTON INTERNAL FLOOR AREA (APPROX.) 1612 sq ft/ 150.0 sq m

Whilst every attempt has been made to ensure the accuracy of this floor plan, measurement of doors, windows, rooms and any other items are approximate and no responsibility is taken for any error, omission or mis-statement.  
Made with Metropix © 2026.

## Energy Efficiency Graph



These particulars, whilst believed to be accurate are set out as a general outline only for guidance and do not constitute any part of an offer or contract. Intending purchasers should not rely on them as statements of representation of fact, but must satisfy themselves by inspection or otherwise as to their accuracy. No person in this firm's employment has the authority to make or give any representation or warranty in respect of the property.