

# HUNTERS®

HERE TO GET *you* THERE

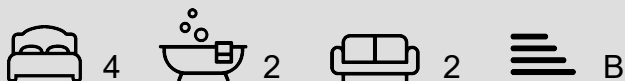


## Bridgefield Close, Manchester

Price £435,000

Council Tax:

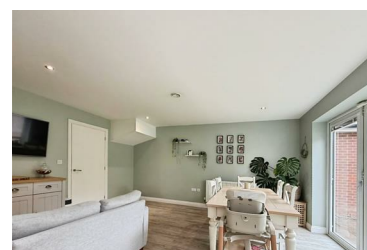
Tenure: Leasehold



Nestled in the desirable area of Bridgefield Close, Manchester, this splendid detached family home offers an ideal blend of comfort and convenience. Boasting four spacious bedrooms, this property is perfect for families seeking ample living space. The home is tastefully decorated throughout, providing a warm and inviting atmosphere that is ready for you to move in and make your own.

With an impressive EPC rating of B, this residence not only ensures energy efficiency but also contributes to lower utility bills, making it an environmentally friendly choice. The well-designed layout allows for both relaxation and entertaining, catering to the needs of modern family life.

Situated close to a variety of amenities, including excellent transport links, this property offers easy access to local shops, schools, and recreational facilities. Whether you are commuting to work or enjoying a day out, the location is both practical and appealing.



38 Lord Street, Leigh, WN7 1AB  
Tel: 01942 673 308 Email: [leigh@hunters.com](mailto:leigh@hunters.com)  
<https://www.hunters.com>

