



Foxgrove Village, Clifton

Three-bedroom
semi-detached house
available to buy
through shared ownership



A home of your
own at a price
you can afford



 ncha

Specifications

Kitchen

- Fitted modern kitchen
- Integrated oven and hob
- Stainless steel extractor hood
- Contemporary mixer taps
- Vinyl flooring

Bathroom

- White suite with chrome fittings
- Tiling to ceiling around the bath
- Shower over bath
- Glass shower screen
- Vinyl flooring

Heating

- Gas fired central heating
- Thermostatic radiator valves
- Double glazed windows

External

- Allocated off-street parking
- Enclosed rear garden
- Front and rear outside lights

Decoration

- White emulsion walls and ceilings
- White gloss painted woodwork

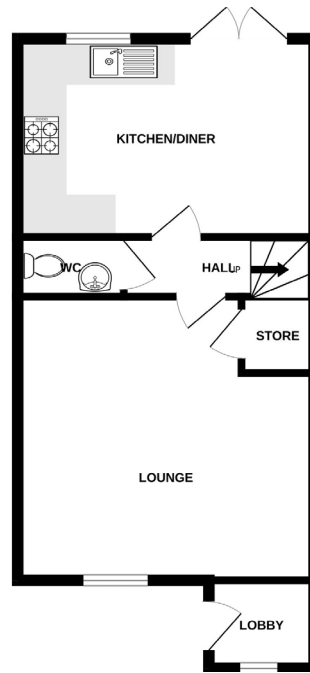
Energy assessment

Predicted energy assessment – B

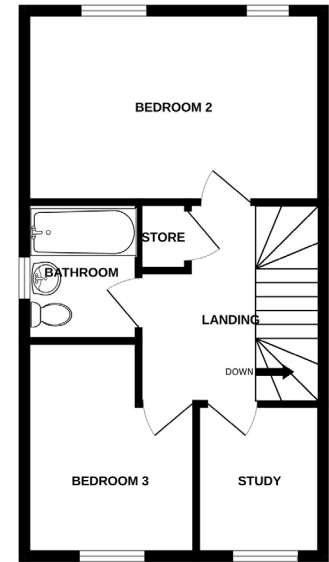
Key dimensions

Room	Dimensions
Living room	4615mm x 4659mm
Kitchen/Dining	4615mm x 2800mm
Bedroom 1	3489mm x 3361mm
Bedroom 2	4615mm x 2837mm
Bedroom 3	2687mm x 3131mm
Office	2370mm x 1838mm

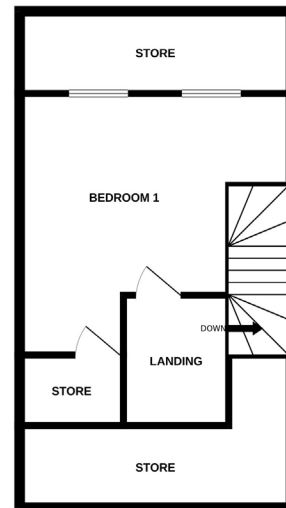
Any measurements quoted are approximate and must be checked on site and against the layout, which may vary due to unforeseen circumstances. Floor plans may be mirror handed. These details have been produced for illustrative purposes only and does not form any part of a contract or constitute an offer. Actual specification may vary from that shown in floor plan.



Ground floor



First floor



Second floor

How to find us

The development is located at Foxgrove Village in Clifton. If using a SatNav, the postcode is NG11 8SU.

Buying more shares

The homes are sold on a standard shared ownership lease, so you can purchase more shares to 100% and acquire the freehold.