



## 1 Kent Terrace, Ramsgate, CT11 8LU

Offers in the region of £170,000

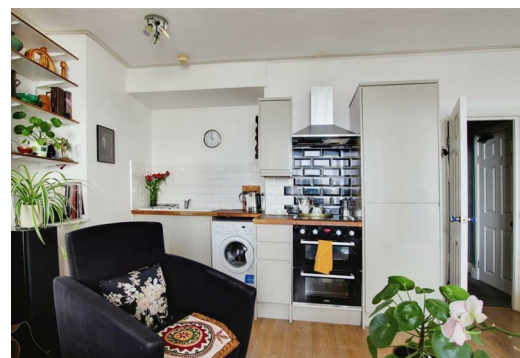
KENT TERRACE is the location for this stunning 2 bedroom apartment with very close connections to the Royal Harbour one of which is in the country and being situated only meters away and the Cleopatra's needle and "Weatherspoon's" Near by.

This stunning example of a period property set in a row of amazing architecture and sea views is this beautiful 2 bedroom ground floor apartment set in the stunning building of which is this rear find.

The property is unique in location and in character. The bay window for instance and the open plan living is perfect for entertaining and social visits. Both bedrooms are doubles and offer space and light for just simply the best place to live, Right by the seaside and not far from the beach and café lifestyle. If you would like to view please do call us straightaway.

Council tax band A

Lovetts of Ramsgate office.



# 1 Kent Terrace, Ramsgate, CT11 8LU

