



48 Landswood Park

Hartford, Northwich

- A Modernised, Detached Bungalow In An Established And Sought After Part Of The Village
- Accommodation: Porch, Entrance Hall, Cloakroom, Lounge Dining room, Kitchen, Inner Hall, Three Bedrooms & Bathroom
- Outside: Corner Plot With Gardens To Three Sides. Attached Garage & Driveway.

This modernised three bedroom detached bungalow presents an exceptional opportunity to acquire a stylish and comfortable home in a highly sought after part of the village, offering thoughtfully updated interiors and a versatile layout ideal for a range of buyers.

The property welcomes you with a practical porch, leading into a spacious entrance hall and a convenient cloakroom, setting the tone for the well-planned accommodation throughout.

The generous lounge dining room boasts a bright and airy atmosphere, perfect for both relaxing and entertaining, while the contemporary kitchen is superbly appointed with sleek cabinetry and built-in appliances to satisfy any home chef.

An inner hall provides access to three well-proportioned bedrooms, each offering flexibility for family living, guest accommodation, or home working. The modern bathroom is finished to a high standard, featuring quality fixtures and fittings for every-day comfort.

Additional highlights include a wide side path, ideal for discreetly housing bins and providing easy access, as well as a charming private patio tucked behind the garage, accessible via French doors from the third bedroom, creating a delightful spot for morning coffee or quiet reflection.

The property also benefits from an attached garage and driveway, ensuring ample parking and storage solutions.



48 Landswood Park

Hartford, Northwich

Council Tax band: D

Tenure: Freehold

EPC Energy Efficiency Rating: D

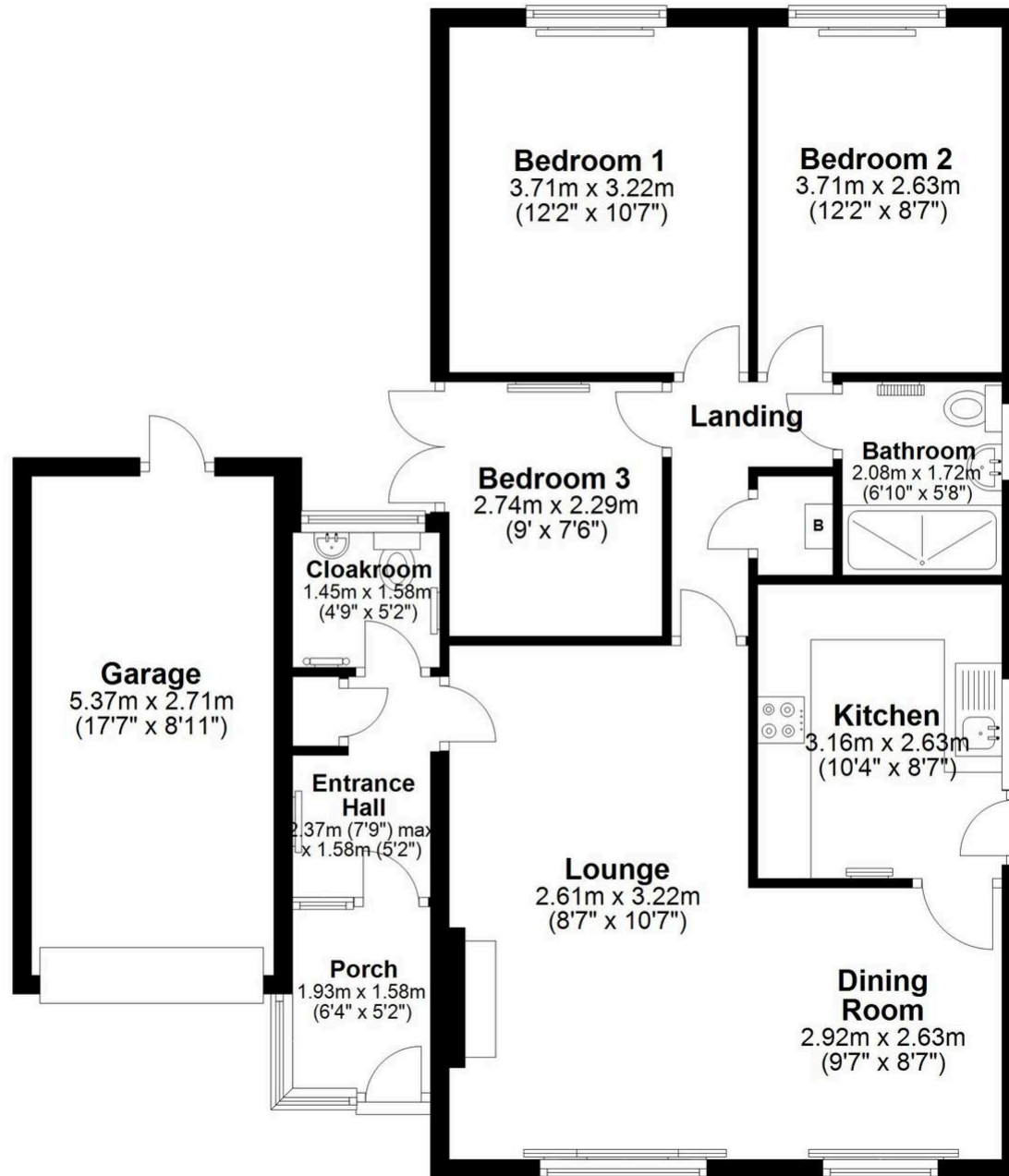
EPC Environmental Impact Rating: D

- A Modernised, Detached Bungalow In An Established And Sought After Part of The Village
- Accommodation: Porch, Entrance Hall, Cloakroom, Lounge Dining room, Kitchen, Inner Hall, Three Bedrooms & Bathroom
- Outside: Corner Plot With Gardens To Three Sides. Attached Garage & Driveway.



Ground Floor

Approx. 83.5 sq. metres (899.1 sq. feet)
(excluding Kitchen)



Total area: approx. 83.5 sq. metres (899.1 sq. feet)



Williams Estates

33 The Green, Hartford - CW8 1QA

01606 331784

info@westates.co.uk

www.westates.co.uk/#/



These particulars, whilst believed to be accurate are set out as a general outline only for guidance and do not constitute any part of an offer or contract. Intending purchasers should not rely on them as statements of representation of fact, but must satisfy themselves by inspection or otherwise as to their accuracy. All measurements quoted are approximate. We are unable to confirm the working order of any fixtures and fittings including appliances that are included in these particulars. No person in this firm's employment has the authority to make or give any representation or warranty in respect of the property. Williams Estates is the trading name of Williams Estates (Ltd). Registered address 33, The Green, Hartford, Northwich, Cheshire, CW8 1QA. Reg number 07682683. Director Andrew P Williams