



6 Grendon Drive
Barton Seagrave, NN15 6RW



Simpson & Partners

Tucked away in a quiet cul-de-sac off Barton Road, this superb three bedroom semi-detached property offers a fantastic combination of comfort, style, and convenience. The home comes complete with off road parking and a single garage, providing ample space for vehicles and storage alike.

Throughout the property, you'll find the benefits of UPVC double glazing and gas radiator heating, ensuring warmth and energy efficiency all year round. Upon entering, a welcoming entrance hall leads you through the well-proportioned accommodation, which includes a convenient downstairs WC and a well-appointed kitchen fitted with built-in appliances, perfect for everyday living and entertaining.

The spacious lounge and dining room features attractive Oak flooring that adds a touch of elegance, while also offering direct access to the rear garden, seamlessly blending indoor and outdoor living. Upstairs, the master bedroom is enhanced by built-in wardrobes, providing excellent storage solutions, and is accompanied by two further well-sized bedrooms, making this an ideal family home. A modern bathroom suite completes the first floor, finished to a high standard.

Externally, the property enjoys the advantage of both front and rear gardens, offering plenty of outdoor space for relaxation and enjoyment. Situated in a peaceful yet accessible location, this home truly has everything a growing family or discerning buyer could wish for.

An internal viewing is highly recommended to fully appreciate all that this superb semi-detached property has to offer.

Price £264,500



3



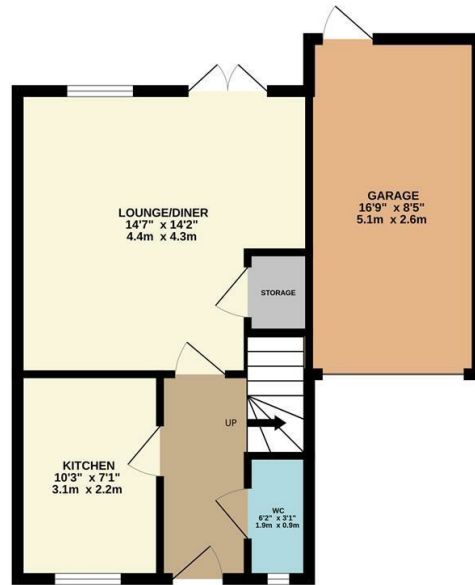
1



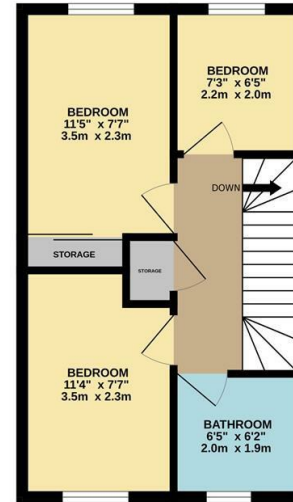
1



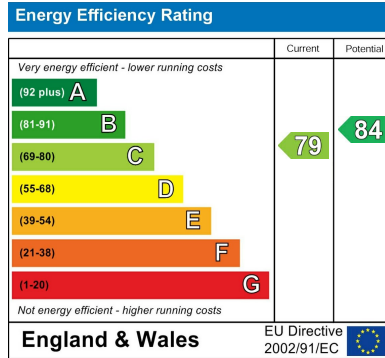
GROUND FLOOR



1ST FLOOR



Whilst every attempt has been made to ensure the accuracy of the floorplan contained here, measurements of doors, windows, rooms and any other items are approximate and no responsibility is taken for any error, omission or mis-statement. This plan is for illustrative purposes only and should be used as such by any prospective purchaser. The services, systems and appliances shown have not been tested and no guarantee as to their operability or efficiency can be given.
Made with Metropix C2020



When you buy with Simpson and Partners, you know **you'll be in safe hands**. From the moment you walk through our doors, we'll make you **feel truly welcome**. Our sales consultants and financial advisors will take you through **every step of the process**, offering **free expert advice** along the way, from help choosing the right mortgage and insurance through to finding your conveyancer. And if you need help selling your home too, **with over 20 years of local experience, you can trust us to get you moving**.



**Simpson
& Partners**

Making Every
Journey Personal



01536 518200

kettering@simpsonandpartners.co.uk

<https://www.simpsonandpartners.co.uk/>

1 Silver Street, Kettering, Northants, NN16 0BN