

Woburn Place, WC1H

£290,000

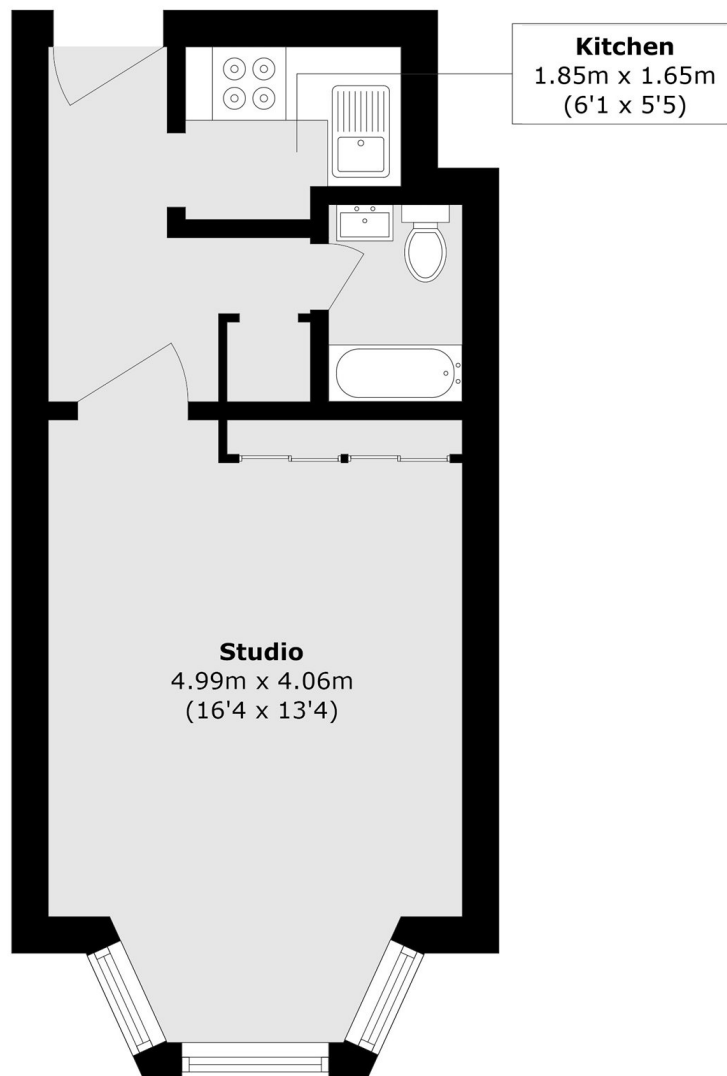
A fifth floor studio apartment located on the quieter Coram Street side of Russell Court. The flat is in excellent condition with a separate kitchen, good storage and an open plan living/bedroom area with bay window.

Russell Court was built in the 1930's and occupies a prominent position close to Russell Square underground station. The area is surrounded by independent eateries, high street shops and gastro style restaurants.

Features

- Studio Apartment
- Share Of Freehold
- Fifth Floor
- Lift Access
- 24 Hr Concierge
- No Onward Chain

Woburn Place, London, WC1H



Total area (approx.): 25.3 sq. m (272.3 sq. ft)