



Meadow View, Chertsey, KT16

Guide Price £600,000

🛏 4 🚿 2 🚗 3



This beautifully presented four-bedroom townhouse has been thoughtfully renovated by the current owners, offering contemporary interiors, generous living accommodation across three floors, and a turnkey finish throughout.

At the heart of the home is a stunning, newly fitted kitchen/dining room, finished to a high standard with sleek cabinetry, quality integrated appliances, and ample space for both everyday family life and entertaining. The spacious first-floor living room provides a bright and welcoming retreat, flooded with natural light from large windows.

The accommodation is both versatile and well-proportioned, comprising four bedrooms, including a flexible ground-floor bedroom/study ideal for home working, guests, or a playroom. The principal bedroom enjoys the benefit of a stylishly refitted en-suite shower room, while the family bathroom has also been tastefully modernised with contemporary fittings and finishes. A convenient ground-floor cloakroom further enhances the practicality of the home.

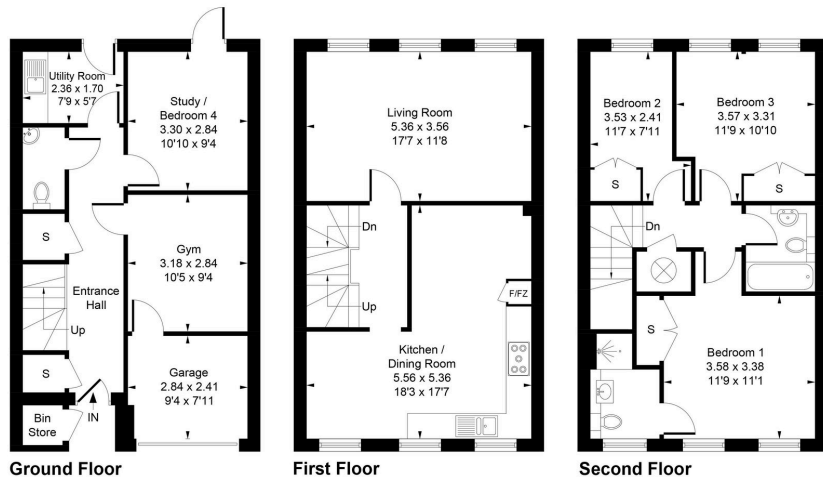
Outside, the property boasts a beautifully landscaped rear garden, designed for low maintenance and year-round enjoyment. Featuring a decked seating area, paved terrace, mature planting, and artificial lawn, it provides an ideal setting for outdoor dining and relaxation.

Further benefits include an integral garage, driveway parking, utility room, excellent storage throughout, and a high-quality decorative finish that allows the next owner to simply move straight in.

Offering approximately 1,578 sq ft (146.56 sq m) of versatile accommodation, this exceptional home combines modern style with family-friendly living in a highly desirable setting.



Approximate Gross Internal Area (Including Garage) = 145.66 sq m / 1568 sq ft
 Bin Store = 0.90 sq m / 10 sq ft
 Total = 146.56 sq m / 1578 sq ft



Whilst every attempt has been made to ensure the accuracy of the floor plan contained here, measurements of doors, windows, rooms and any other items are approximate and no responsibility is taken for any error, omission, or mis-statement. This plan is for illustrative purposes only and should be used as such by any prospective purchase.

- Four-bedroom townhouse
- Renovated by the current owners
- Newly fitted modern kitchen
- Stylish refitted bathrooms
- Spacious living room
- Versatile study/bedroom four
- Utility room & cloakroom
- Integral garage & driveway
- Landscaped westerly facing rear garden
- Approx. 1,578 sq ft accommodation

