



Guide Price
£700,000

Freehold

3x  2x  2x 

**Tarrant Wharf, Arundel,
West Sussex, BN18**

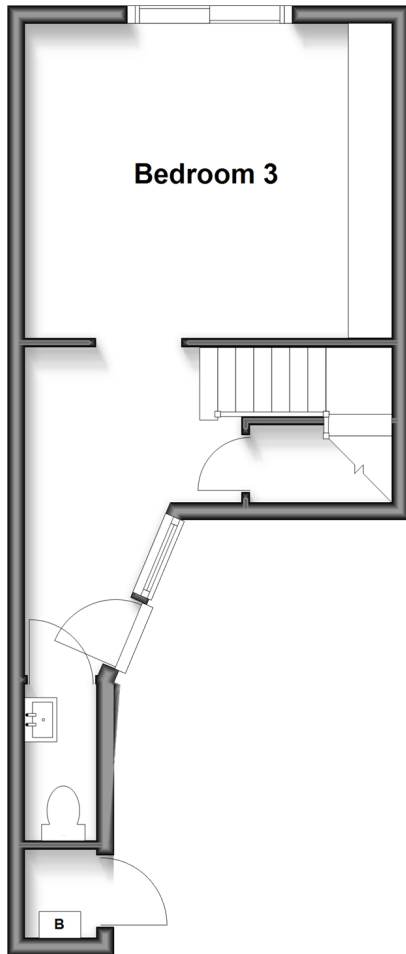
OVER 60?

Secure this property
for up to **59% less!**

cubitt&west
Helping you move forwards

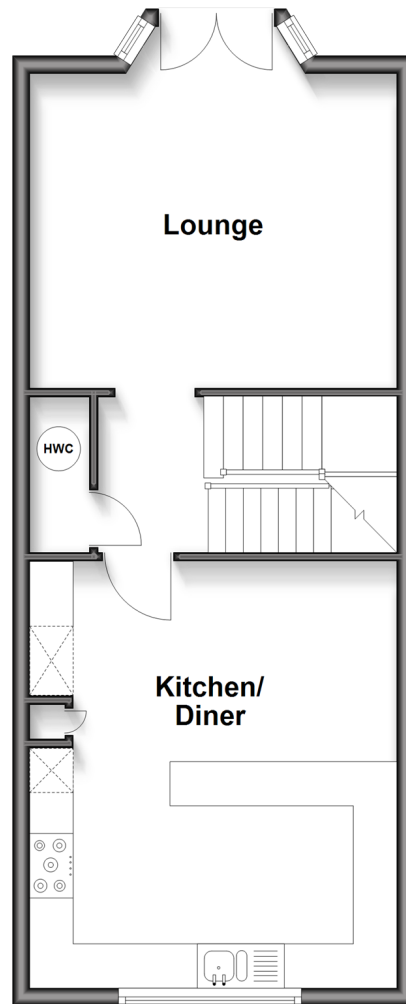
Ground Floor

Approx. 27.8 sq. metres (299.1 sq. feet)



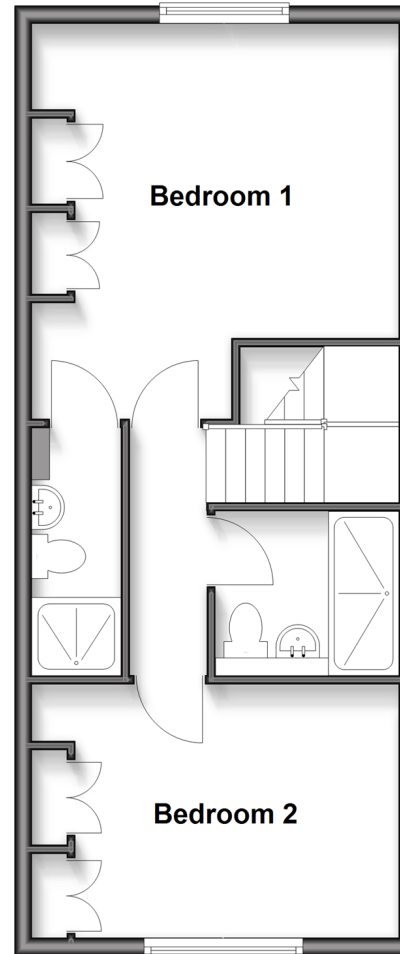
First Floor

Approx. 44.6 sq. metres (480.0 sq. feet)



Second Floor

Approx. 43.7 sq. metres (470.1 sq. feet)



Accommodation

GROUND FLOOR

Entrance Hall

Bedroom 3: 13'10 x 11'8 (4.22m x 3.56m)

Cloakroom : 5'8 x 2'8 (1.73m x 0.81m)

FIRST FLOOR

Landing

Lounge : 13'11 x 11'9 (4.24m x 3.58m)

Kitchen/ Diner: 15'11 x 13'11 (4.85m x 4.24m)

SECOND FLOOR

Landing

Bedroom 1: 14'6 maximum (4.42m) narrowing to 11'8 minimum (3.56m) x 13'11 (4.24m)

En Suite Shower Room : 9'1 x 3'4 (2.77m x 1.02m)

Bedroom 2: 13'11 x 9'9 (4.24m x 2.97m)

Shower Room : 6'8 x 5'8 (2.03m x 1.73m)

OUTSIDE

Carport and Driveway

Riverside Garden

Visitors Parking



Main features

- Quiet cul-de-sac in the heart of town just a short walk from shops, eateries and historic castle
- Integral car port and visitors parking
- Spacious and recently landscaped riverside terrace overlooking the river and fields
- Flexible accommodation, with the ground floor room suitable as a home office or studio
- Contemporary juliet balcony with sunning riverside views



Nearest Schools

Primary Schools: St Philip's Catholic Primary, Arundel 0.2 miles, Arundel CofE Primary 0.6 miles

Secondary Schools: St Philip Howard Catholic High School 6.3 miles, Bishop Luffa CofE School 12.6 miles



Transport Information

Train Stations: Arundel 0.6 miles, Ford 1.8 miles, Littlehampton 3.0 miles



Address

Tarrant Wharf, Arundel, West Sussex, BN18



Directions

For directions to this property please contact us.



cubitt&west
Helping you move forwards

Call Arundel Branch 01903 884420 ■ cubittandwest.co.uk



- Legal advice should be taken to verify fixtures/fittings, planning, alterations and/or lease details
- Appliances & services are untested, dimensions are approximate and floor plans are not to scale
- Through a Homewise Home For Life Plan people aged 60+ can secure this property for up to 50% less, by purchasing a Lifetime Lease.



23215203/20250821/RH/DW