

33 Rosslyn Crescent, Wembley, Middlesex, HA9 7PA

A BEAUTIFULLY PRESENTED THREE BEDROOM, TWO BATHROOM FAMILY HOME We are delighted to have been favoured with instructions to bring to the market this stunning three bedroom semi detached property which has been modernised to an exceptional standard by the present owner.

Internally, the property briefly comprises of a welcoming entrance hall, a front reception room, a rear reception room, a high quality fitted kitchen with NEFF appliances, a downstairs shower room, three first floor bedrooms and a further modern family bathroom with a separate W/C.

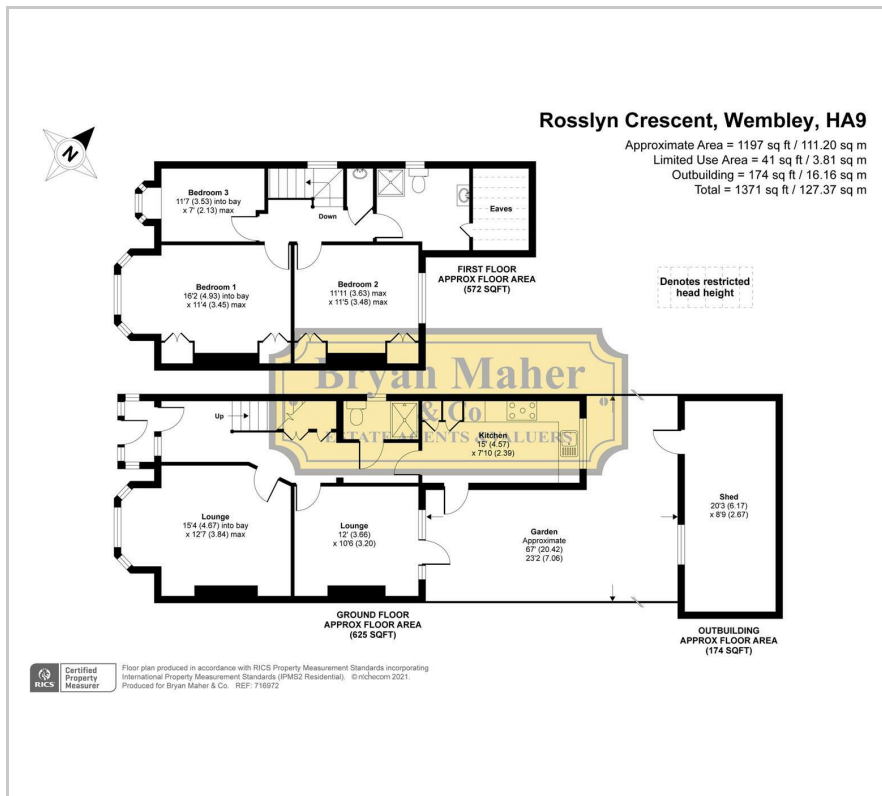
Externally, the property boasts a good size rear garden leading to a large timber outhouse and off street parking to the front.

This stunning property will attract immediate attention, so an early viewing is strongly advised in order to avoid disappointment.

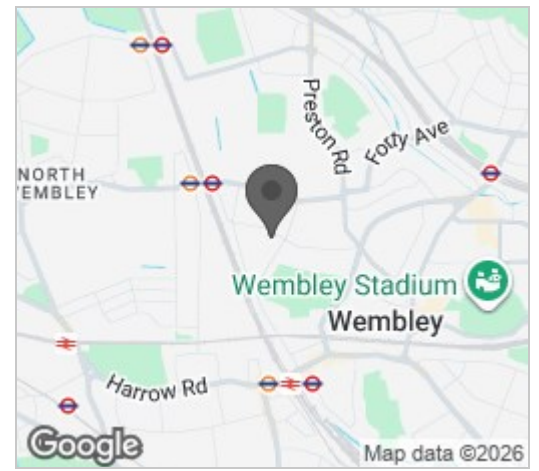
- THREE BEDROOMS
- SEMI DETACHED
- COMPLETELY MODERNISED
- TWO BATHROOMS
- LARGE MODERN KITCHEN
- LARGER STYLE PROPERTY
- GOOD SIZE GARDEN
- OFF STREET PARKING

£624,950

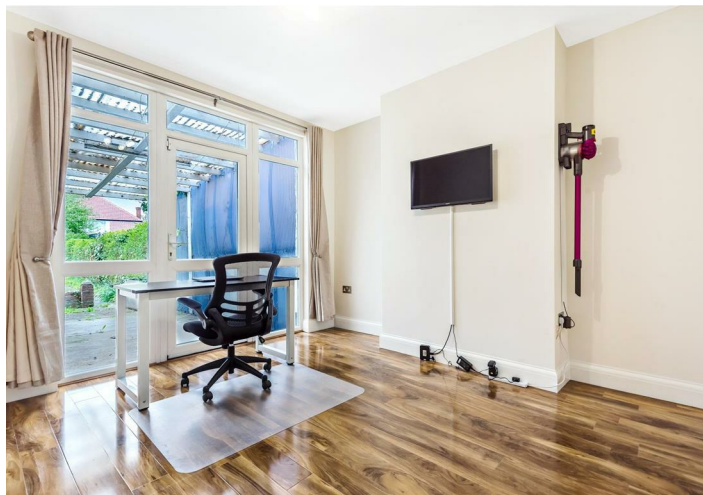
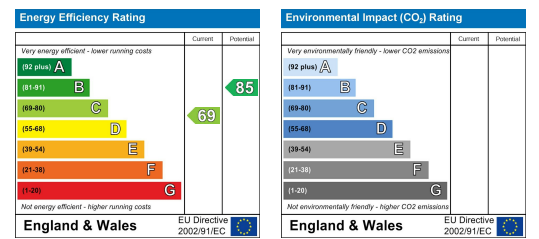
Floor Plan



Area Map



Energy Efficiency Graph



These particulars, whilst believed to be accurate are set out as a general outline only for guidance and do not constitute any part of an offer or contract. Intending purchasers should not rely on them as statements of representation of fact, but must satisfy themselves by inspection or otherwise as to their accuracy. No person in this firm's employment has the authority to make or give any representation or warranty in respect of the property.

