



# WETHERELL

MAYFAIR'S FINEST PROPERTIES



## Berkeley Street, W1J

£4,766 PCM

A charming two double bedroom apartment on the second floor of a period building just south of Berkeley Square.

This lateral apartment of 703 sq ft is well presented throughout with lift access and a porter.

Comprising a characterful, bright reception room with floor to ceiling French windows leading onto a modern kitchen space. The front facing master bedroom with built in wardrobes and two large sash windows with light pouring through the space. The secondary double bedroom also benefits from storage space.

Berkeley Street runs south from Berkeley Square to Piccadilly and is ideal for Green Park tube station on the Piccadilly, Victoria and Jubilee lines. Piccadilly Circus and the amenities and attractions of the West End are close by.

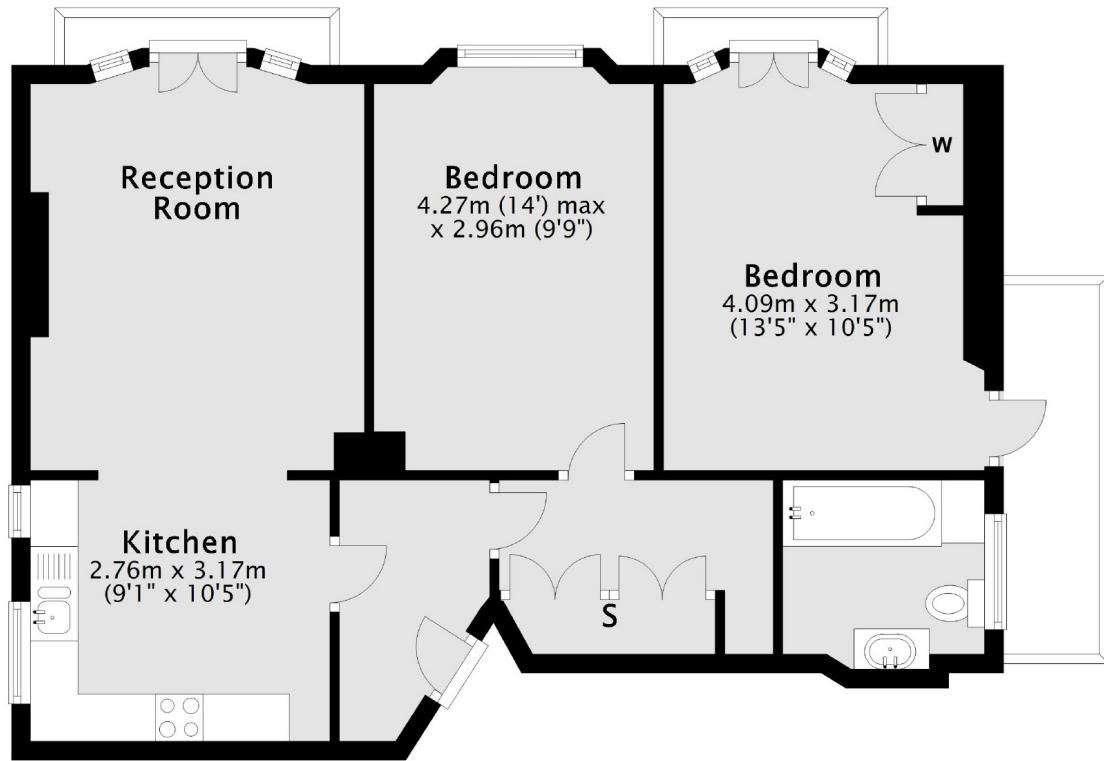


## FEATURES

- Two Double Bedrooms • Wooden Flooring • Day Porter • Lift Access • High Ceilings • Excellent Location •



Berkeley Street,  
London, W1J



### First Floor

Total area: approx. 65.4 sq. metres (703.8 sq. feet)



**WETHERELL**  
MAYFAIR'S FINEST PROPERTIES

102 Mount Street,  
London, W1K 2TH

T: 020 7529 5588  
E: [rentals@wetherell.co.uk](mailto:rentals@wetherell.co.uk)

We aim to make our particulars both accurate and reliable. However they are not guaranteed; nor do they form part of an offer or contract. If you require clarification on any points then please contact us, especially if you're traveling some distance to view. Please note that appliances and heating systems have not been tested and therefore no warranties can be given as to their working order.



[wetherell.co.uk](http://wetherell.co.uk)