



5 Hazelwood, Loughton, IG10 4ET

Asking price £950,000

Located in the charming area of Hazelwood, Loughton, this delightful mid-terrace house offers a perfect blend of space and comfort. Spanning 1600 square feet, this property is ideal for families seeking a welcoming home.

The house features a spacious reception room, providing ample space for both relaxation and entertaining guests. The well-designed layout ensures that each room flows seamlessly into the next, creating a warm and inviting atmosphere. With four generously sized bedrooms, there is plenty of room for everyone to enjoy their own private space.

The property boasts two modern bathrooms, thoughtfully designed to cater to the needs of a busy household. This feature adds to the convenience and functionality of the home, making daily routines a breeze.

Built in 1975, this residence combines classic charm with contemporary living. The surrounding area of Hazelwood is known for its friendly community and excellent local amenities including excellent schools and near the central line station and extremely vibrant High Street, making it an ideal location for families and professionals alike.

In summary, this mid-terrace house in Hazelwood, Loughton, presents a wonderful opportunity for those seeking a spacious and comfortable family home. With its generous living space, multiple bedrooms, and convenient bathrooms, it is sure to meet the needs of modern living. Do not miss the chance to make this lovely property your own.

Buckhurst Hill Office
62-64 Queens Road
Buckhurst Hill
IG9 5BY

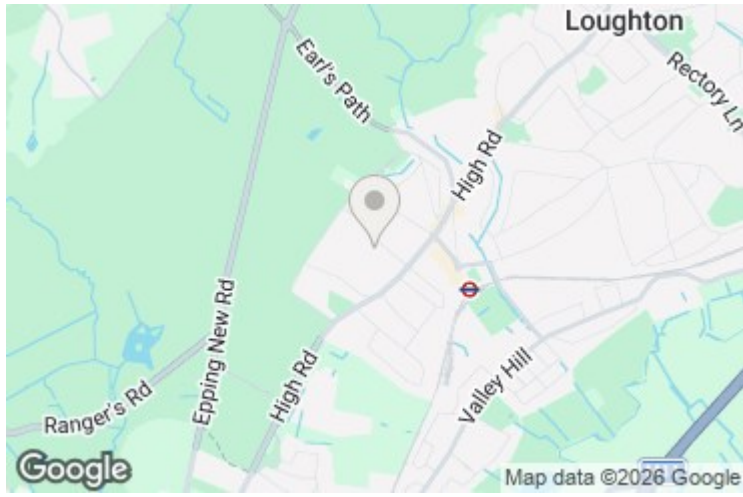
London Office
33 Cavendish Square
London
W1G 0PW

Head Office
119 High Road
Loughton
IG10 4LT

Contact Details
OFFICE 020 8559 7474
ADMIN 020 8559 2000
FAX 020 8281 7778
www.edwardtaub.co.uk

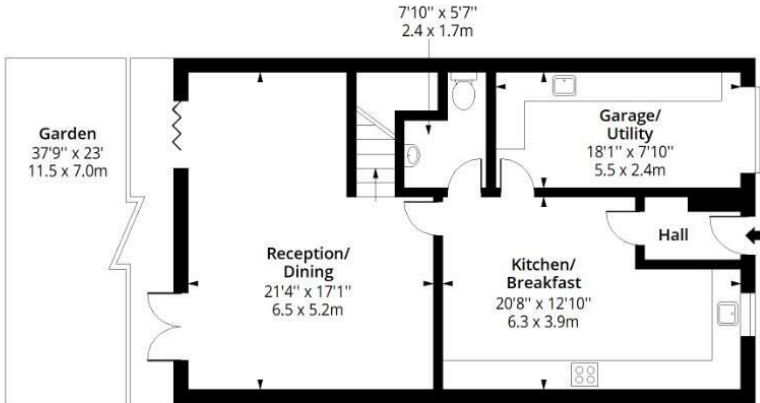
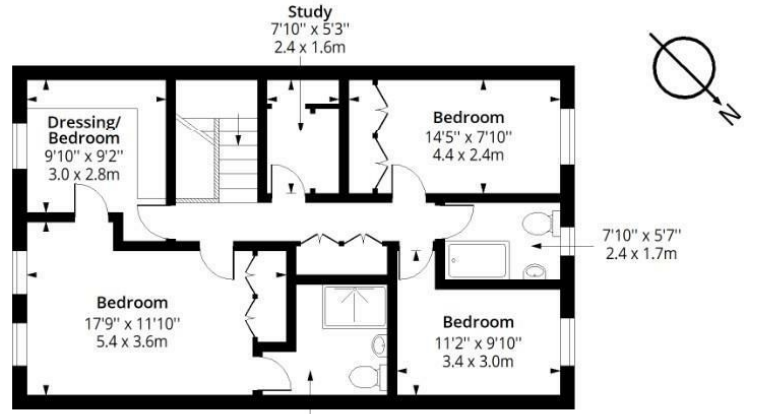


5 Hazelwood, Loughton, IG10 4ET



Hazelwood, IG10

Approx. Gross Internal Area 1616 Sq Ft - 150.13 Sq M



Ground Floor

Floor Area 827 Sq Ft - 76.83 Sq M

8'6" x 7'7"
2.6 x 2.3m

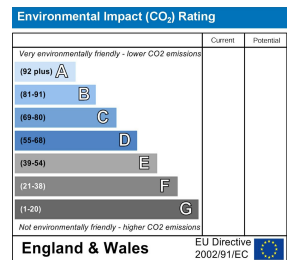
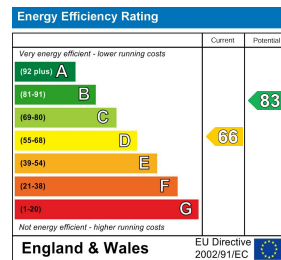
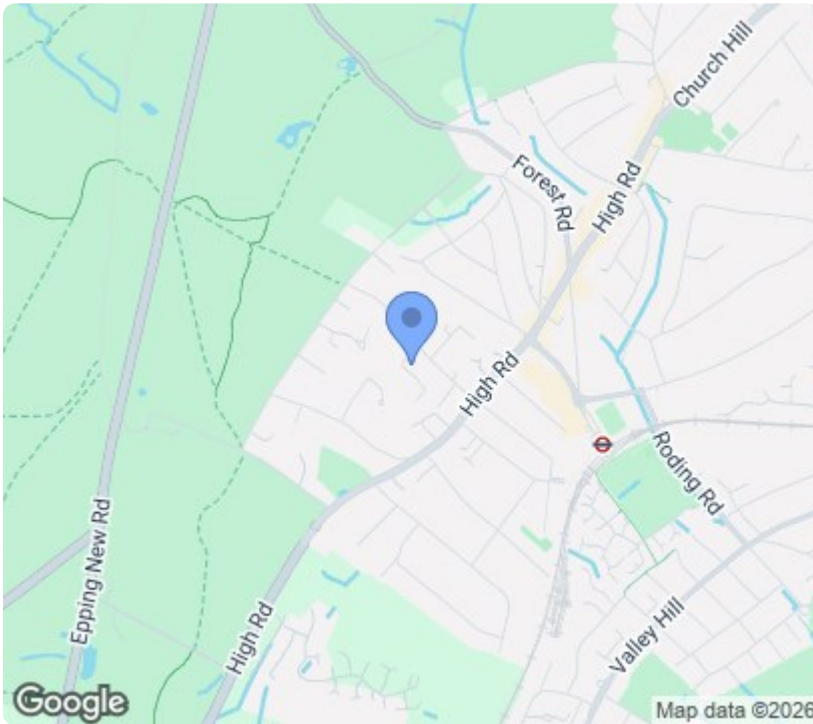
First Floor

Floor Area 789 Sq Ft - 73.30 Sq M



Measured according to RICS IPMS2. Floor plan is for illustrative purposes only and is not to scale. Every attempt has been made to ensure the accuracy of the floor plan shown, however all measurements, fixtures, fittings and data shown are an approximate interpretation for illustrative purposes only. 1 sq m = 10.76 sq feet.

Date: 16/1/2026



Buckhurst Hill Office
62-64 Queens Road
Buckhurst Hill
IG9 5BY

London Office
33 Cavendish Square
London
W1G 0PW

Head Office
119 High Road
Loughton
IG10 4LT

Contact Details
OFFICE 020 8559 7474
ADMIN 020 8559 2000
FAX 020 8281 7778
www.edwardtaub.co.uk

