



## St. Marychurch Street, SE16

£600,000

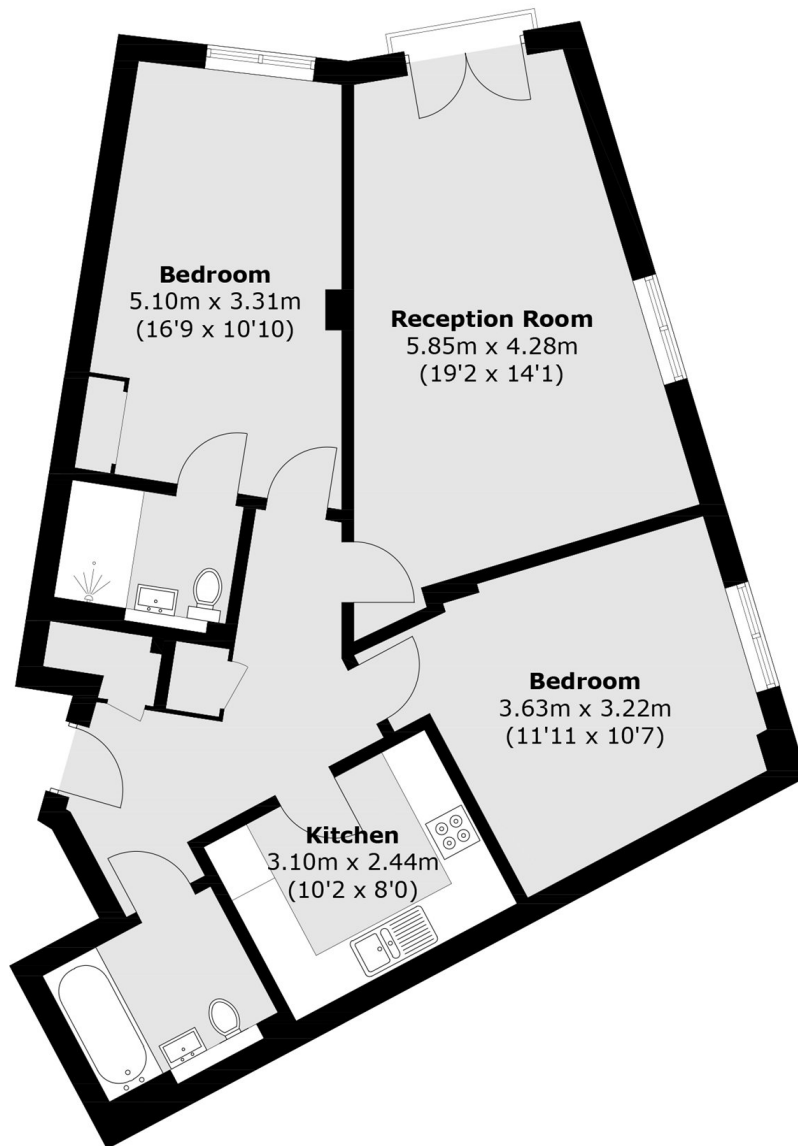
Set over 880 square feet and being sold with no onward chain, this bright and spacious flat, within the sought-after Rotherhithe Village, is tucked inside a gated community with a concierge and secure car park. Set on a quiet street, this 3rd floor flat, with lift, is wonderfully peaceful, overlooking a small park and offering views of Canary Wharf.

A boutique development located only 0.2 miles from Rotherhithe Station, 0.3 miles from Canada Water station. St Marychurch Street is on Cycleway 14 with the nearest bike dock just 0.1 miles away. The development is surrounded by shops, cafés and historic riverside eateries.

### Features

- Chain Free
- Concierge
- Secure Allocated Parking
- Two Double Bedrooms
- Two Bathrooms
- Excellent Condition
- Fantastic Location
- Bike Storage

# St. Marychurch Street, London, SE16



## Third Floor

Total area (approx.): 82.0 sq. m (882.6 sq. ft)