

CLOSEST SCHOOLS

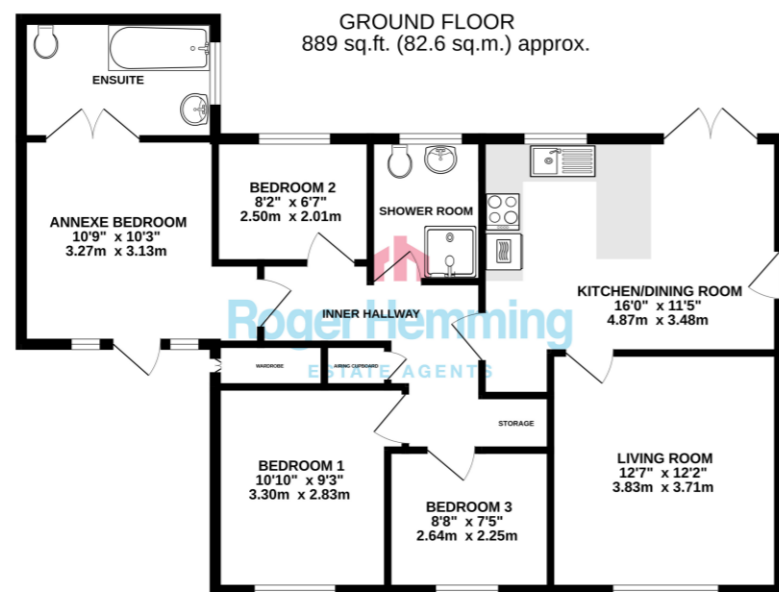
PRIMARY

Honiton Primary School
www.honiton-pri.devon.sch.uk

Littleton Primary School
www.littleton.devon.sch.uk

SECONDARY

Honiton Community College
www.honitoncollege-devon.sch.uk



TOTAL FLOOR AREA: 889 sq.ft. (82.6 sq.m.) approx.
While every attempt has been made to ensure the accuracy of the floorplan contained herein, measurement of doors, windows, rooms and any other items are approximate and no responsibility is taken for any error, omission or misstatement. This plan is for illustrative purposes only and should be used as such by any prospective purchaser. The services, systems and appliances shown have not been tested and no guarantee is given as to their capability or efficiency at the time of writing.
Made with Metreplan 10/2015

LOCATION

The village of Dunkeswell lies in the Blackdown Hills AONB, just to the north of the East Devon market town of Honiton. The area has excellent lines of communication with the A30 dual carriageway linking Honiton to Junction 29 of the M5 Motorway at nearby Exeter. Honiton has a railway station with regular services to Waterloo and Exeter. Exeter Airport provides regional and continental scheduled air services.



FIND OUT MORE

Viewing by prior appointment:
Roger Hemming Estate Agents
Conway House, New Street
Honiton EX14 1HA
T: 01404 45343
E: roger@rogerhemming.co.uk

To see more details on this and all our homes go to
www.rogerhemming.co.uk



**21 POTTERS STILE
DUNKESWELL EX14 4XA**

If you're looking for a smart modern detached home with versatile living space, perhaps to welcome an older relative or provide comfortable accommodation for a family member needing easy-access living, this could be the perfect fit.

£340,000
freehold

TYPE
Detached Bungalow

BEDROOMS
4

RECEPTION ROOMS
1

BATHROOMS
Shower Room & En-Suite

OUTSIDE
Front & Rear Gardens

PARKING
Garage & Driveway Parking

HEATING
Economy 7 Electric Heating
uPVC Double-Glazing

ENERGY RATING
66 / D



ROGER HEMMING'S VIEW...

Constructed along traditional lines during the late 1980s, this attractive detached bungalow has been thoughtfully extended and now offers four bedrooms and two bathrooms. Bright, well-maintained living spaces are decorated in neutral tones, creating a home that feels both welcoming and practical for modern family life. The attractive kitchen provides plenty of storage and preparation space, together with a breakfast bar and dining area, perfect for chatting with family or friends over a glass of wine whilst meals are being prepared. French doors open directly onto the rear garden, helping to bring the outside in during the warmer months. To the front of the property, the comfortable living room offers an ideal place to relax and unwind. The bungalow includes a generous double bedroom with fitted wardrobes together with two cosy single bedrooms, ideal for children, hobbies or a home office. Particularly noteworthy is the principal bedroom suite created within the extension, complete with a spacious en-suite bathroom and its own external entrance.

"The unique and flexible arrangement of the accommodation here would work beautifully for multi-generational living. It's ideal for an independent teenager, guest accommodation, or a relative seeking a greater degree of privacy and independence."

WHAT THE AGENT SAYS...

OUTSIDE

21 Potters Stile has a neat open-plan front garden together with a garage and driveway providing useful off-road parking. To the rear, the enclosed south-facing garden has clearly been designed with entertaining in mind, featuring a raised sun deck and separate barbecue area, ideal for relaxing outdoors and making the most of the fine weather.

The Highfields residential development has a well-stocked convenience store and Post Office, a social club and a playgroup. Nearby Honiton, a ten minute drive, has a good range of shops and businesses. The seaside resorts of Lyme Regis, Sidmouth and Seaton are all less than half an hour's drive.

This is a thoroughly versatile home with far more to offer than first meets the eye, it's a property that really needs to be viewed. Call us now!