



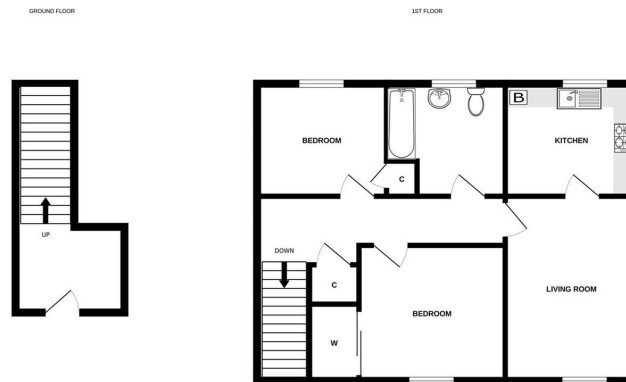
24 Kincaig Drive,
Milton of Leys,
Inverness, IV2
6DQ

Offers Over £165,000



Fantastic opportunity to purchase a two-bedroom first-floor flat in the sought-after Milton of Leys area of Inverness. This well-presented property is in walk-in condition and features modern décor and bright, spacious rooms. The generous lounge has a large front-facing window, while the kitchen is fitted with an integrated gas hob, electric oven, and extractor. The fridge/freezer and washing machine are also included in the sale. Bedroom one has mirrored double wardrobes and partial views towards the Moray Firth. The second bedroom is a good-sized double with a built-in wardrobe. A modern bathroom completes the accommodation. Further benefits include a hall cupboard for additional storage, double glazing, gas central heating, and ample parking for residents and visitors. In excellent order throughout, this property is ideal for first-time buyers and also offers strong investment appeal.

- Fantastic 2 bed first floor flat in sought after location
- Lounge, kitchen, 2 double bedrooms, bathroom
- Ideal for first time buyers or investors
- Compliant with current letting legislation
- Off street parking and ample visitor spaces
- EPC band B



Extras: Included in the sale are all fitted floor coverings, fixtures and fittings, and all light fittings, together with curtain poles and window blinds. Integrated appliances include the gas hob, electric oven, and extractor, as well as the fridge/freezer and washing machine. All furniture is also included, comprising a sofa, TV unit, two side tables, two beds and mattresses, and four bedside tables.

Services: Mains gas, electricity, water and drainage. Broadband

Council Tax: C

Floor Area: 656.60 sq ft

Date of Entry: By mutual agreement

Viewing: Don't delay – get in touch with Tailormade Moves today to arrange a viewing

The Greenhouse Beechwood
Business Park
Inverness
Highland
IV2 3BL

E: info@tailormademoves.co.uk
T: 01463 233218

