



KIRKSTALL ROAD, SW2

£575,000

- Three double bedrooms
- Split level
- Off street parking
- Share of freehold
- Telford park conservation area
- Energy rating: E





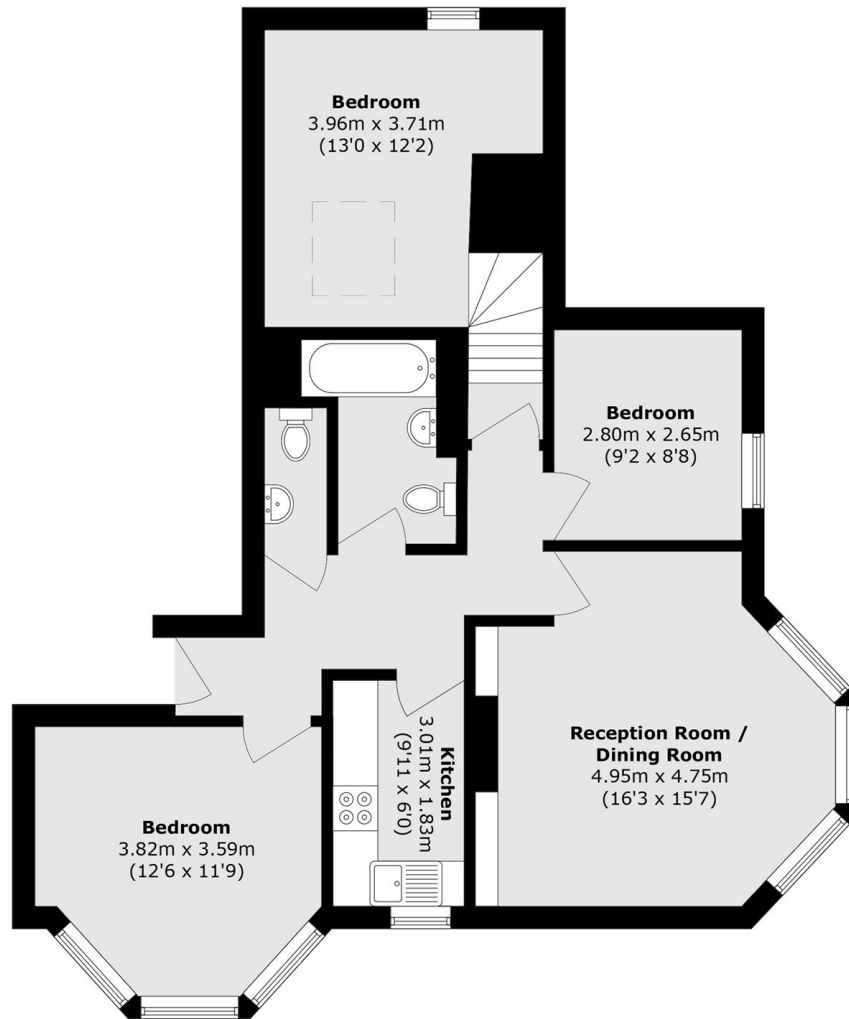
ABOUT THE HOME

This three double bedroom split level apartment is set in an excellently maintained Victorian building located within the illustrious Telford park conservation area. The property comes with both a share of the freehold and off street parking.

Kirkstall Road is a quiet tree lined road situated close to Balham and Streatham Hill. The Telford Park Conservation Area is one of Streatham and Balham's most sought after neighbourhoods. Telford Park is known for its tennis club which hosts several events throughout the year for the local residents.







Total area (approx.): 78.7 sq. m (847.1 sq. ft)

JACKSONS STREATHAM

1-3 De Montfort Parade,
Streatham High Road,
Sales: 020 8487 3179
Lettings: 020 8487 3180

Energy Rating: E We aim to make our particulars both accurate and reliable. However they are not guaranteed; nor do they form part of an offer or contract. If you require clarification on any points then please contact us, especially if you're traveling some distance to view. Please note that appliances and heating systems have not been tested and therefore no warranties can be given as to their good working order.