



Holbrook Gardens, Watford, WD25 8AB

Asking Price £1,850,000 Freehold

Holbrook Gardens, Watford, WD25 8AB

An immaculate 5 BEDROOM, THREE BATHROOM (TWO EN SUITE) DETACHED family home approx 3500 sq ft/ 325 sq m finished to exacting specifications by Octagon Homes, situated on the award winning Wall Hall development. Set within 55 acres of grounds and boasting resident's gym, tennis court, children's play area and delightful paths and trails.

The accommodation comprises: entrance hall, family room, drawing room, spacious kitchen/diner, reception room, utility room and guest cloakroom. Whilst above on the first floor is the principal bedroom with fitted wardrobes and an en suite bathroom. Bedroom two with an en suite, together with two further bedrooms and a family bathroom. On the top floor is bedroom five together with a large study.

To the front, the drive allows parking for several cars and leads to the garage. The rear GARDEN is a south west facing garden with an expansive patio.

Currently let on AST until June 2026

- Award Winning Wall Hall development in 55 acres of parkland, with a gym, tennis court & playground
- Gated development
- Detached family house
- 5 Double bedrooms, three bathroom, 2 en suite
- Well presented
- Garage and off street parking
- Freehold
- Gas central heating





VIEWING

Strictly by appointment with Susmans Estates

Tel: 01923 859444

Score	Energy rating	Current	Potential
92+	A		
81-91	B		83 B
69-80	C	79 C	
55-68	D		
39-54	E		
21-38	F		
1-20	G		

Approximate Gross Internal Area 3500 sq ft – 325 sq m
 Ground Floor Area 1457 sq ft – 135 sq m
 First Floor Area 1378 sq ft – 128 sq m
 Second Floor Area 665 sq ft – 62 sq m

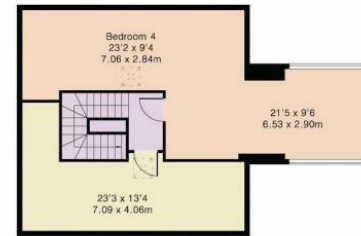
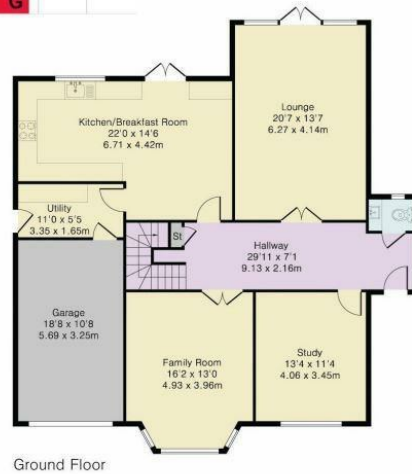
FREEHOLD
Local Authority – Hertsmere
Council Tax Band - H



Email: office@susmansestates.com
 Website: susmansestates.com
[@aitchisons](https://www.instagram.com/aitchisons)

*Aitchison Raffety Limited trading as Aitchisons.
 Registered Office: Unit 4 Stokenchurch Business, Park ,
 Ibstone Road, Stokenchurch, Buckinghamshire, HP14 3FE
 Registered in England & Wales No.3435902*

Ref:



Although Pink Plan Ltd ensures the highest level of accuracy, measurements of doors, windows and rooms are approximate and no responsibility is taken for error, omission or misstatement. These plans are for representation purposes only as defined by RICS code of measuring practise. No guarantee is given on total square footage of the property within this plan. The figure icon is for initial guidance only and should not be relied on as a basis of valuation.

DISCLAIMER: In accordance with the 1993 Misrepresentation Act the agent had not tested any apparatus, equipment, fixtures, fittings or services and so, cannot verify they are in working order, or fit for their purpose. Neither has the agent checked the legal documentation to verify the leasehold/freehold status of the property. The buyer is advised to obtain verification from their solicitor or surveyor. Also, photographs are for illustration only and may depict items which are not for sale or included in the sale of the property. All size are approximate. All dimensions include wardrobe spaces where applicable.