



Roehampton Close, SW15

£3,750 Per calendar month

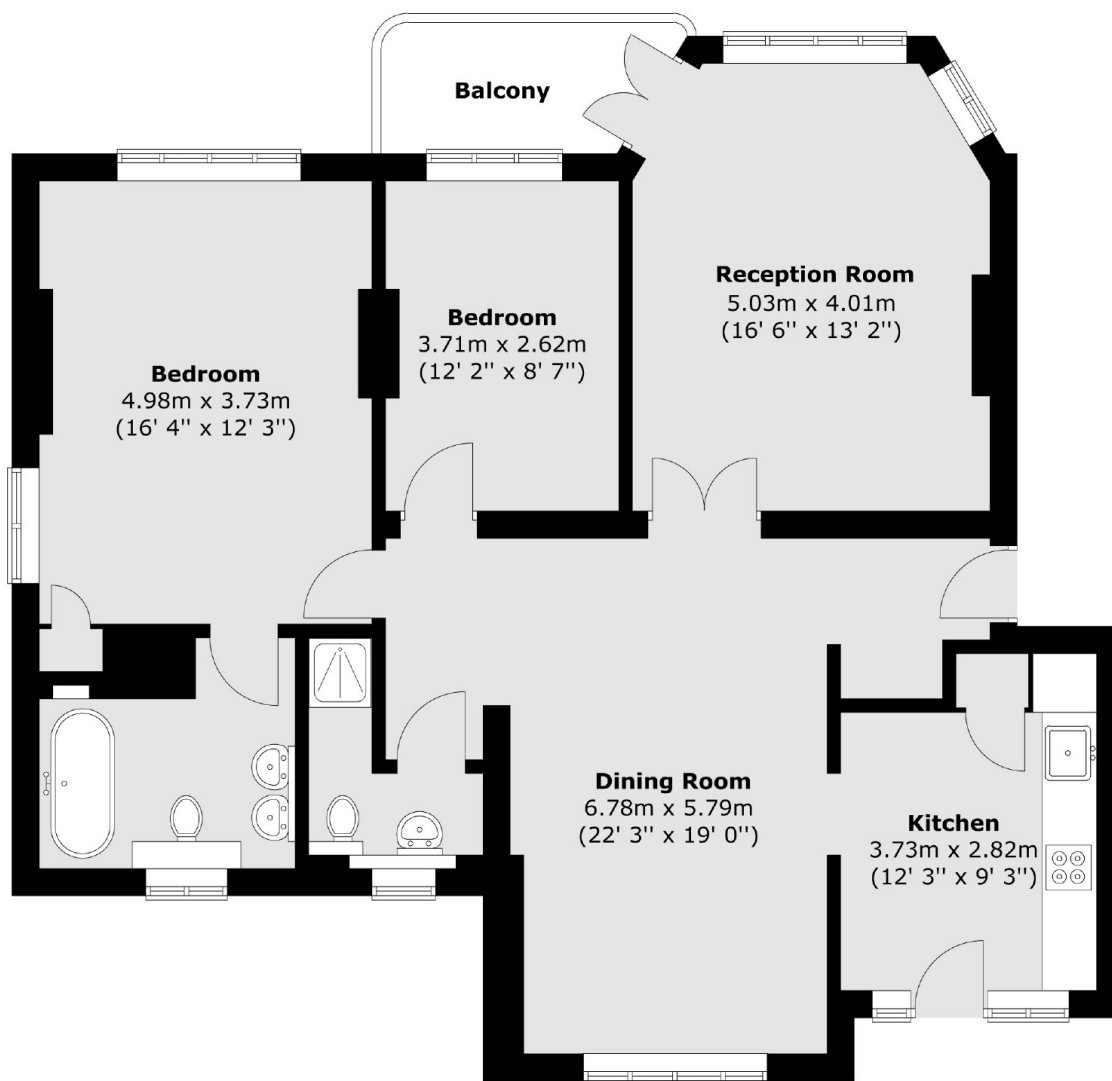
Situated within a beautiful mansion block in a peaceful cul-de sac, this immaculately and renovated three bedroom, two bathroom apartment offers bright and spacious accommodation finished to the highest standard throughout.

Roehampton Close is a stunning Art Deco development set in a quiet cul-de-sac. Located within close proximity to the transport links of Barnes and Putney (National Rail), and walks along the River Thames as well as nearby Richmond Park.

Features

- Newly Renovated
- Top Floor Apartment
- Three Double Bedrooms
- Two Modern Bathrooms
- Two Balconies
- Parking Available

Roehampton Close, London, SW15



Total area (approx.) : 101.6 sq. m (1094 sq. ft)
Total balcony area (approx.) : 3.8 sq. m (41 sq. ft)