



AMIT CHAUHAN

exp<sup>®</sup> UK

@ amit.chauhan@exp.uk.com

amitchauhan.exp.uk.com

07816 228 619

Linley Road, Eynesbury, St. Neots, PE19 2UJ

Offers Over £300,000

3 2 1



- AC1436
- Well-proportioned bungalow
- Generous room sizes
- Good-sized rear garden
- Garage for parking or storage
- Scope to modernise or personalise
- Popular residential location
- Ideal for downsizers or those seeking one-level living
- Freehold
- EPC - TBC



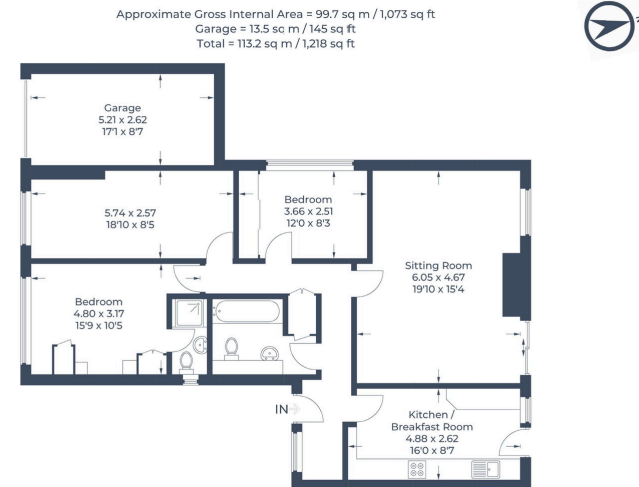


Illustration for identification purposes only, measurements are approximate, not to scale.  
© C3 Property Marketing Produced for eXp

A rare chance to secure a spacious bungalow with a large garden and garage in a sought-after location.

A well-sized three-bedroom bungalow set within a popular and established residential area, offering spacious and versatile living all on one level. The property provides a practical layout with generous room sizes throughout, complemented by a good-sized rear garden and the added benefit of a garage. Ideally positioned within easy reach of the town centre, local amenities, and transport links including the train station, this home is perfectly suited to those looking to downsize without compromising on space, or buyers seeking the ease and convenience of single-level living in a well-connected location.

