



Plough Road, SW11

£825,000

A large lateral two bedroom, two bathroom 9th floor apartment with a large private roof terrace on the 10th floor which is accessed via an internal staircase which leads up to a sliding glass roof box. The apartment features a fitted Italian kitchen equipped with Bosch appliances and a 4-in-1 tap.

Developed by Thornsett, this exclusive collection of brand new penthouses reach new heights, elevate living standards and provide residents with exclusive, stunning views across the London horizon. Thornsett have also designed the flat with energy efficiency in mind, incorporating air source heat pumps and underfloor heating.

Features

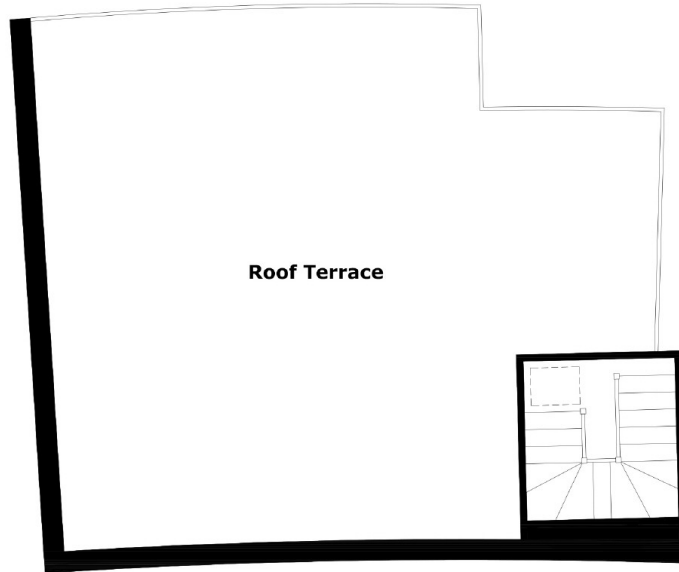
- 645 Square Foot Roof Terrace
- Two Bedrooms
- Two Bathrooms
- Penthouse Apartment
- Italian Designed Kitchens
- Bosch Appliances
- Air Source Heat Pump
- 4-in-1 Hot / Cold Water Tap
- Daytime Concierge



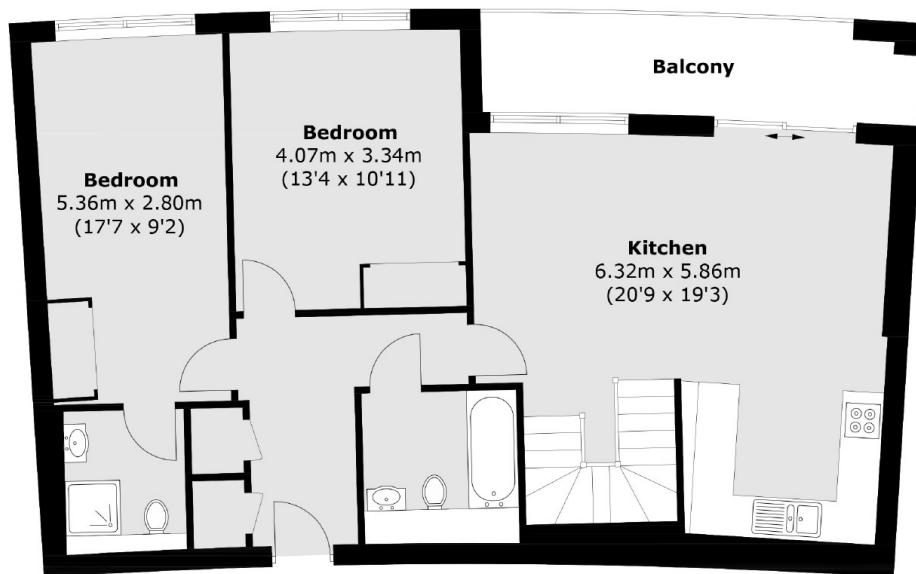
Plough Road, SW11



Plough Road,
Battersea, SW11



Tenth Floor



Ninth Floor

Total area (approx.): 82.9 sq. m (892.3 sq. ft)

Balcony: 9.0 sq. m (96.9 sq. ft)

Roof Terrace: 59.9 sq. m (644.7 sq. ft)

Dexters

New Homes South London
12 The Broadway
London
SW19 1RF
Sales
020 8674 4555

Energy Rating: . We aim to make our particulars both accurate and reliable. However they are not guaranteed; nor do they form part of an offer or contract. If you require clarification on any points then please contact us, especially if you're traveling some distance to view. Please note that appliances and heating systems have not been tested and therefore no warranties can be given as to their good working order.

 **RICS** Regulated
Estate Agent
and Letting Agent

dexters.co.uk