



ELGIN CRESCENT, W11

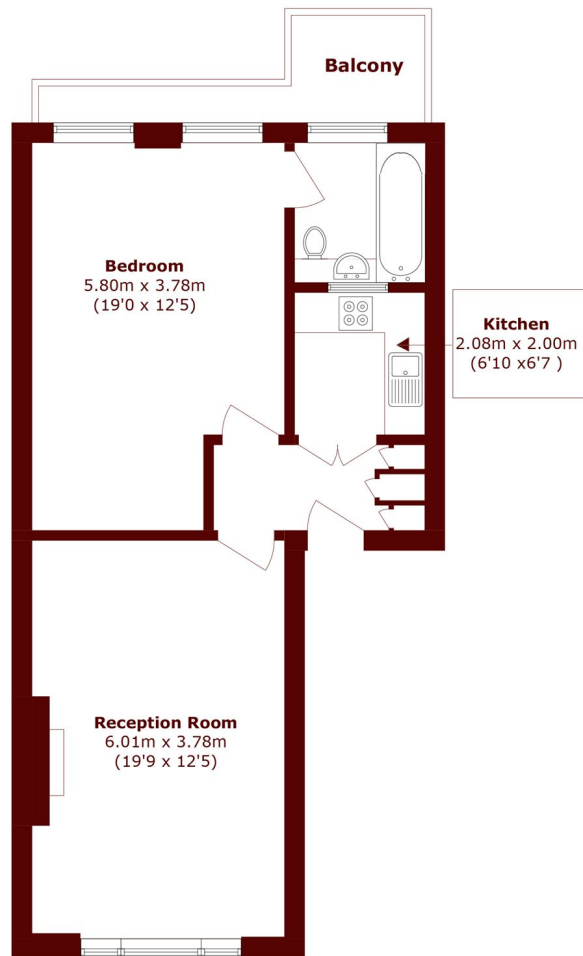
£1,119 per week (£4,498 per month)

A bright and spacious one-bedroom apartment set on a prestigious residential street in the heart of Notting Hill, benefiting from access to beautifully maintained communal gardens.

One bedroom
First floor
High ceilings

Communal gardens
Enviably location
Bright

STEP INSIDE ELGIN CRESCENT



Total area (approx.): 57.1 sq. m (614.6 sq. ft)

Balcony area (approx.): 5.2 sq. m (54.0 sq. ft)

Notting Hill
020 7313 6910

Energy Rating: C We aim to make our particulars both accurate and reliable. However, they are not guaranteed; nor do they form part of an offer or contract. If you require clarification on any points then please contact us, especially if you're traveling some distance to view. Please note that appliances and heating systems have not been tested and therefore no warranties can be given as to their good working order

**MARSH &
PARSONS**