



**Cambria Road, SE5**

**£725,000**

**Dexters**



## Cambria Road, SE5

A charming two bedroom end of terrace freehold house offering well proportioned accommodation throughout, ideally suited to first-time buyers, young families or investors alike. The property benefits from bright and spacious open plan living and kitchen area, two generous bedrooms. Further benefits include off street parking and a substantial private South-West facing garden, perfect for entertaining, outdoor dining or future extension potential (STPP).

Situated on a quiet residential street in the heart of Camberwell, Cambria Road perfectly combines leafy surroundings with vibrant city living. The property is conveniently close to the cafés, restaurants and independent shops of Camberwell and Loughborough Junction, with excellent transport links from nearby Loughborough Junction Station and Denmark Hill Station.

### Features

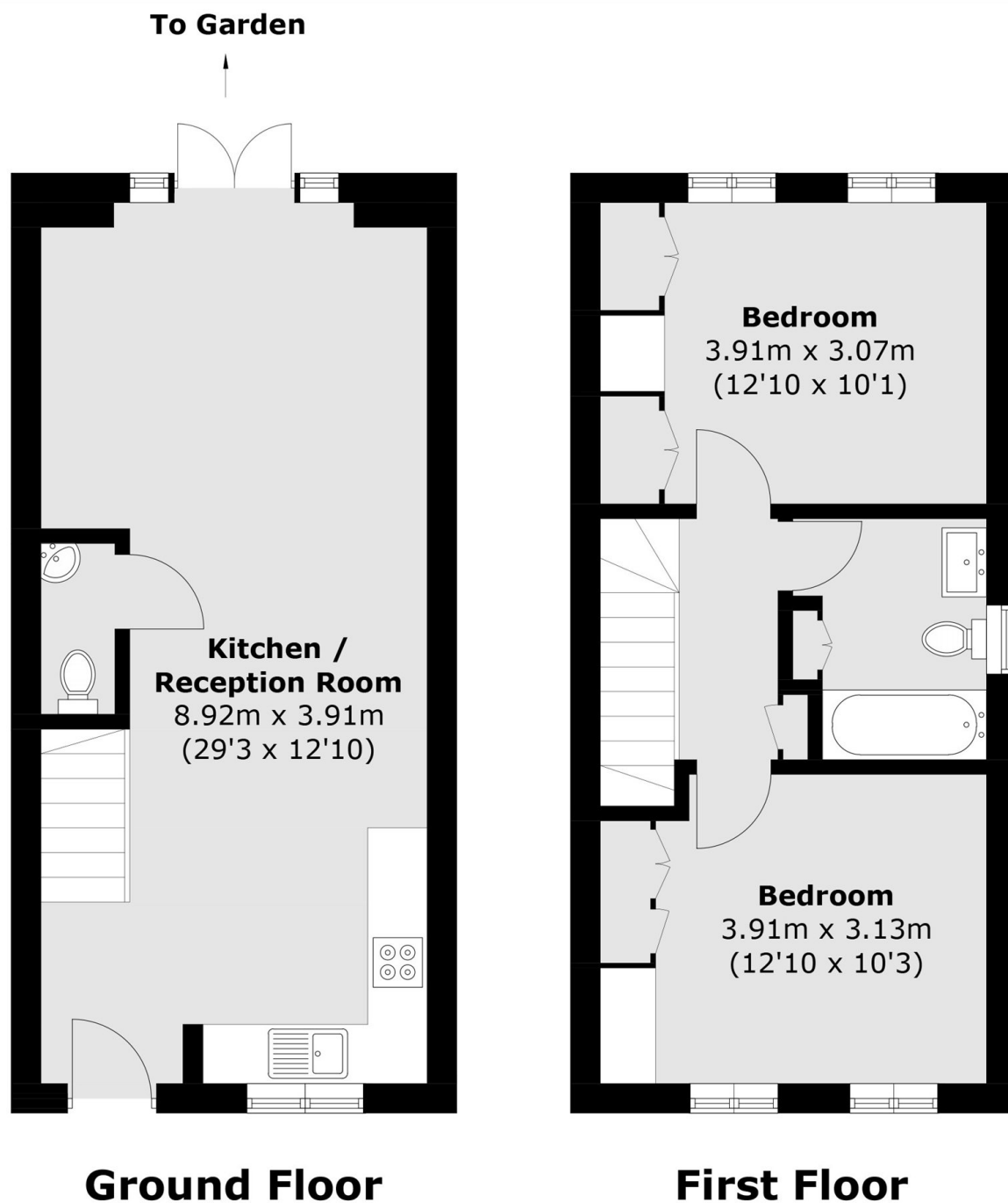
- Freehold House
- Off Street Parking
- Large Private SW Garden
- Two Double Bedrooms
- Downstairs WC







# Cambria Road, London, SE5



Total area (approx.): 70.0 sq. m (753.5 sq. ft)