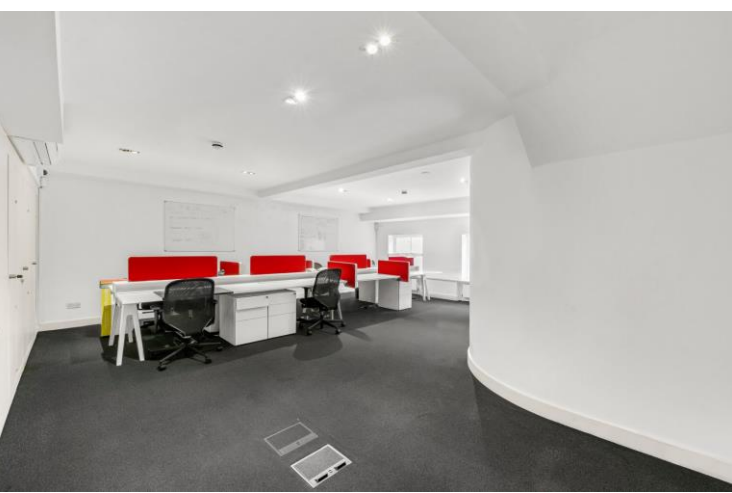




Eastbourne Mews
Bayswater, W2

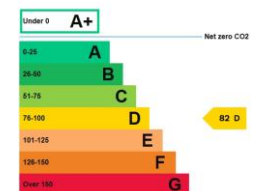




This 1,515 sq ft mews house, formerly used as offices, is currently subject to a planning application for change of use to a private residential dwelling, presenting an excellent blank canvas for a purchaser to create a bespoke London home or pied-à-terre. Situated on Eastbourne Mews, the property is ideally positioned moments from Paddington Station, with an abundance of shops, cafés, pubs and restaurants close by. Sheldon Square, with its amphitheatre, contemporary bars, restaurants and gym, is within easy reach, as are the canal and the A40 Westway, providing both lifestyle appeal and strong connectivity. An ideal London base in a highly convenient and well-connected location.

- 1,515 sq ft
- Mews house
- Blank canvas
- Paddington Station nearby
- Close to shops, cafés & restaurants
- Sheldon Square nearby
- Canal close by
- A40 Westway access

Asking Price £1,250,000



Tenure: Freehold
Service Charge: None
Ground Rent: None
Local Authority: City Of Westminster
Council Tax Band: G

Chestertons Hyde Park & Marylebone Sales

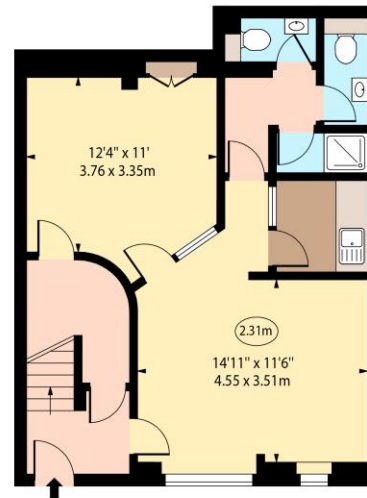
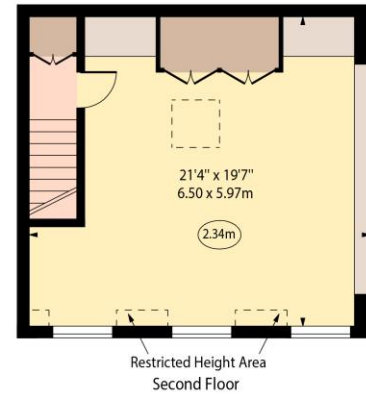
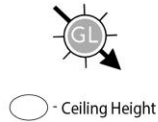
40 Connaught Street
 London
 W2 2AB

hydepark@chestertons.co.uk

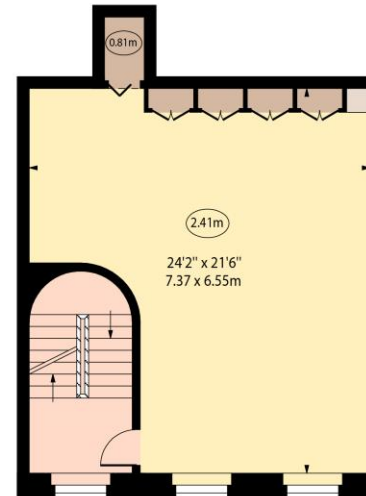
020 7298 5900

chestertons.co.uk

Eastbourne Mews, W2



Ground Floor



First Floor

Approx Gross Internal Area 1497 Sq Ft - 139.07 Sq M
Approx. Floor Area Including Restricted Heights 1515 Sq Ft - 140.74 Sq M

Every attempt has been made to ensure the accuracy of the floor plan shown.
However, all measurements, fixtures, fittings, and data shown are approximate interpretations and for illustrative purposes only. Measured according to the RICS. Not To Scale.
www.goldlens.co.uk
Ref. No. 030210E