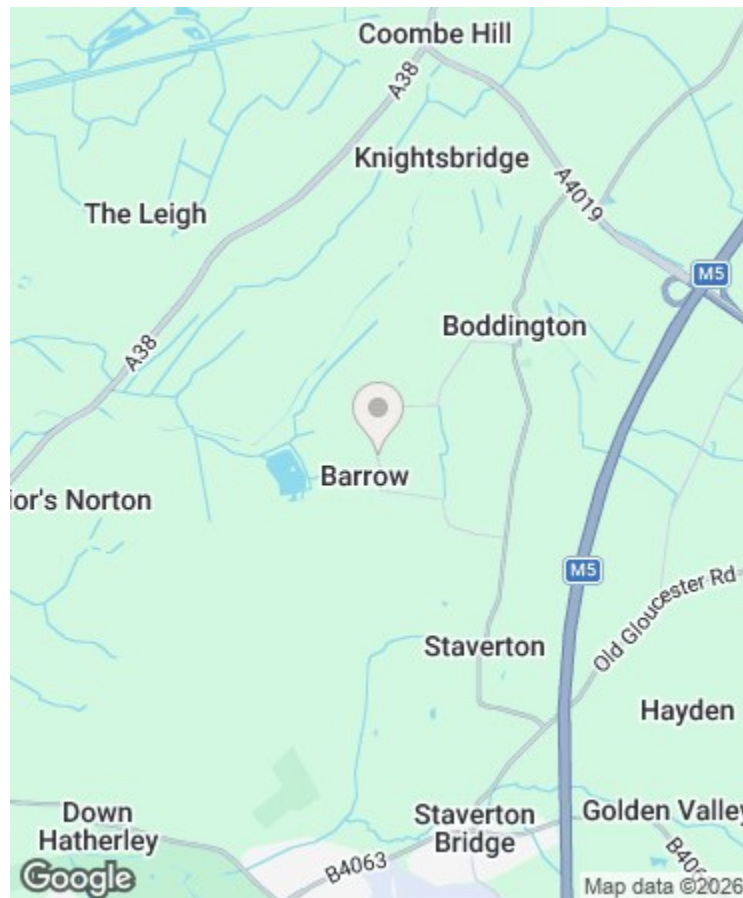




THE COTSWOLD LETTING AGENCY

BETTER BY FAR



### Directions

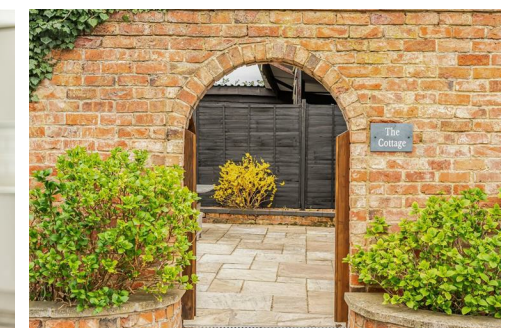
### Viewings

Viewings by arrangement only. Call 01993 684572 to make an appointment.

### EPC Rating

D

Energy Efficiency Rating		Current	Potential
Very energy efficient - lower running costs			
(92 plus) A			
(81-91) B			
(69-80) C			
(55-68) D		64	
(39-54) E			
(21-38) F			
(1-20) G			
Not energy efficient - higher running costs			
England & Wales		EU Directive 2002/91/EC	



The Cottage Barrow, Boddington, Cheltenham, GL51 0TL

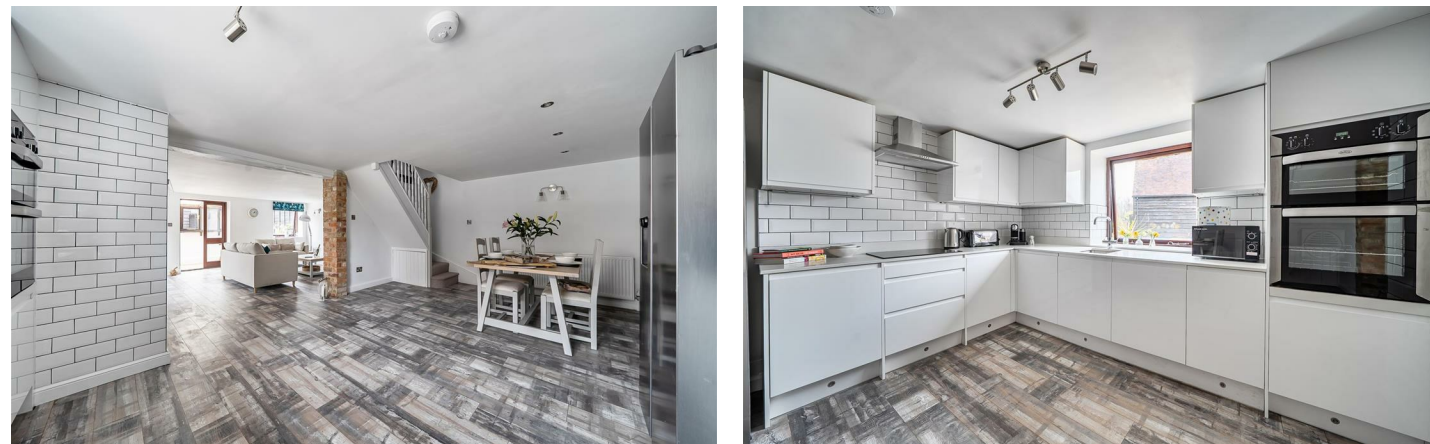
£2,275 Per Month

# The Cottage Barrow, Cheltenham GL51 0TL

Set in the peaceful hamlet of Barrow, near the sought-after village of Boddington, this location offers the perfect balance of rural charm and everyday convenience. Surrounded by attractive open countryside, the area provides a tranquil setting while remaining within easy reach of the vibrant spa town of Cheltenham, known for its excellent shopping, dining and renowned festivals. The historic centres of Gloucester and Tewkesbury are also close by, offering a wide range of amenities, schooling and leisure facilities. For commuters, the property is ideally positioned with swift access to the M5 motorway via Junctions 10 and 11, as well as convenient links to the A38 and A40. Mainline rail services from Cheltenham Spa provide direct connections to major cities including Birmingham and London, making this an exceptional choice for those seeking a countryside lifestyle without compromising on connectivity.



Council Tax Band:



A beautifully presented, contemporary two-bedroom cottage, finished to an exceptional standard throughout and offering stylish, low-maintenance living in a highly desirable village setting.

Tucked away in the picturesque village of Boddington, The Cottage forms ancillary accommodation to the main house and is available as a furnished short-term let.

Upon entering, you are welcomed into a cosy yet elegant living room, complete with a charming log burner. This leads seamlessly through to a bright and airy kitchen/dining area, enjoying views over the swimming pool — with access available to guests on a pre-arranged basis.

Upstairs, the property offers two well-proportioned double bedrooms. The principal bedroom is particularly spacious and filled with natural light, benefiting from ample storage, while the second bedroom provides comfortable accommodation for guests or additional occupants. A modern family bathroom completes the first floor, featuring a walk-in shower.

Externally, The Cottage enjoys its own private courtyard with a delightful outdoor dining area, perfect for relaxing or entertaining. Private parking is available to the front of the main house, accessed via secure gates.

This charming home offers a rare opportunity to enjoy village living in a thoughtfully designed and fully furnished property.

Please contact the office to discuss bills