



## Primrose Hill Road, NW3

### £585,000

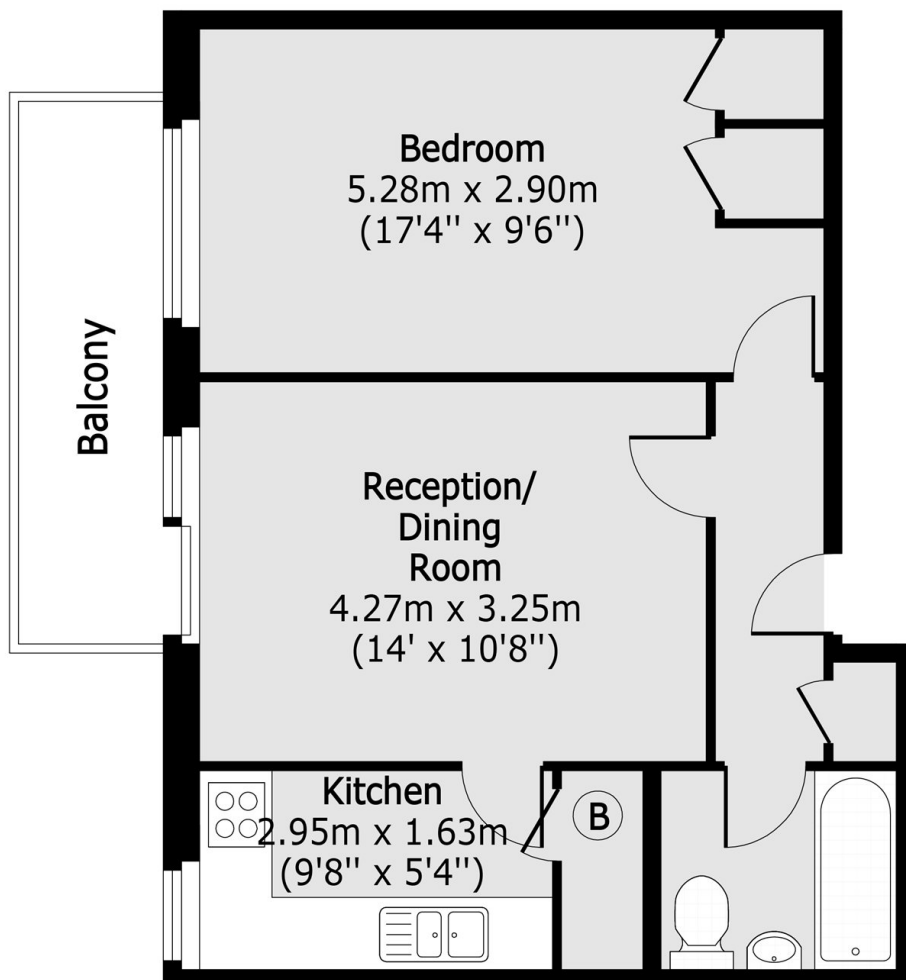
A well proportioned one double bedroom apartment featuring a private balcony with beautiful, far reaching views across London. The property also offers a separate kitchen and is sold with a share of freehold.

Set in a highly regarded Hampstead location, King's College Court enjoys an elevated position with exceptional outlooks. Hampstead Heath and the amenities of South End Green are within easy reach. Excellent transport links include Hampstead Heath Overground and Belsize Park Underground (Northern line).

### Features

- One Double Bedroom
- Chain Free
- Share of Freehold
- Balcony
- Excellent Views
- Off Street Parking

# Primrose Hill Road, London, NW3



Total area (approx): 43.29 sq m (466 sq. ft)

Balcony total area (approx): 5.57 sq m (60 sq. ft)