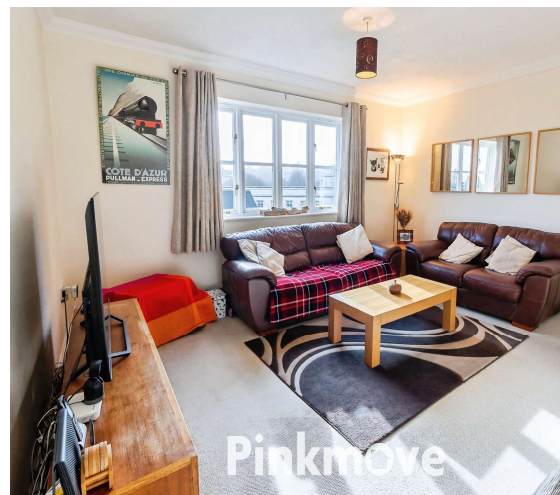




Pinkmove

St. Cecilia Court, Gold Tops guide price £150,000-£160,000

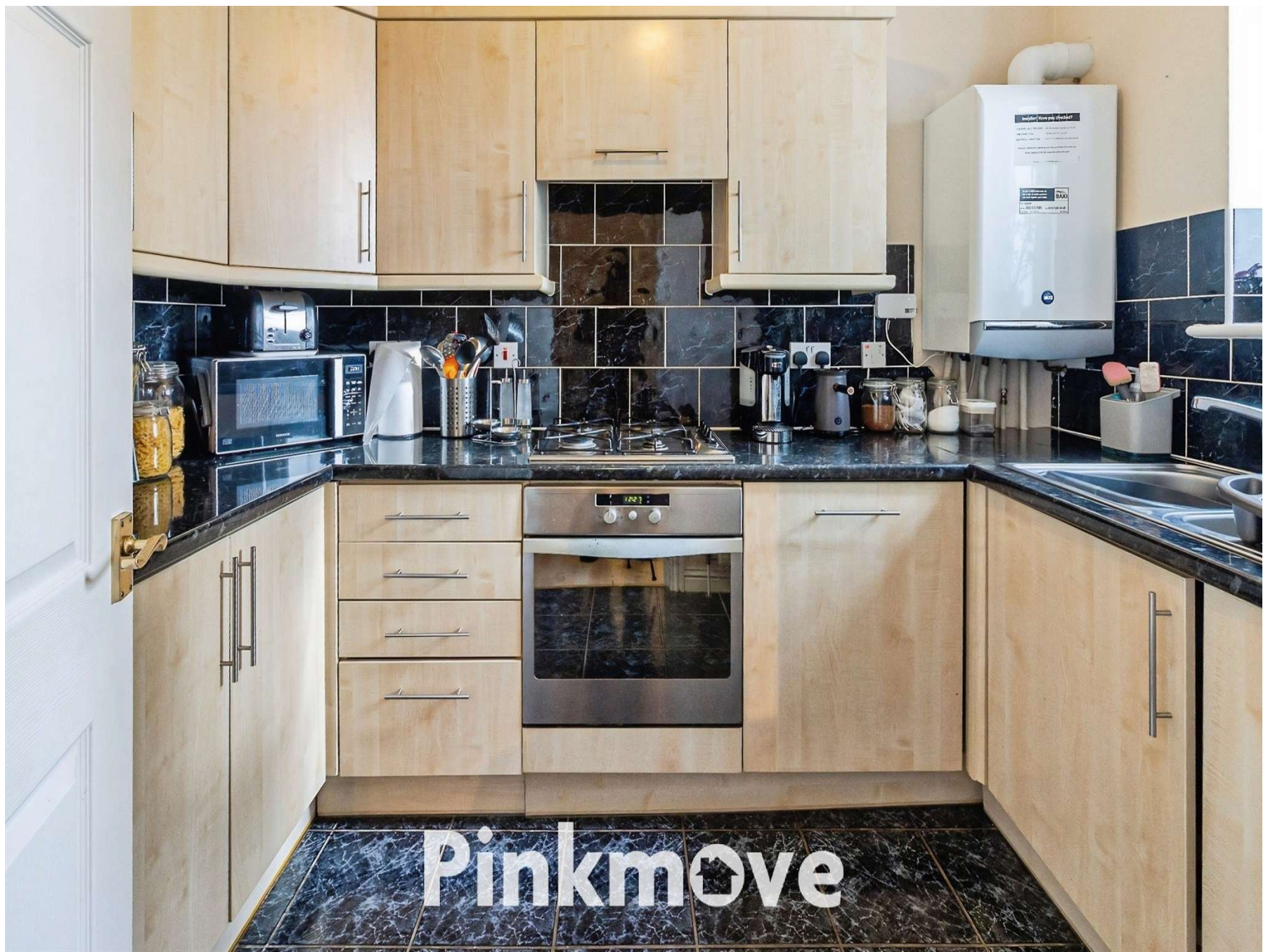
- Guide Price £150,000 - £160,000
- Sought After Gold Tops Location
- Idyllic Setting Close to City Centre
- Spacious approx. 702 Sq Ft Apartment
- Bright Lounge with Large Picture Window
- Modern Kitchen & Contemporary Bathroom
- Two Double Bedrooms with Ensuite to Master
- Allocated Parking & Visitor Parking.
- EPC Rating: C



2 2 1

Pinkmove

01633 746088
team@pinkmove.co.uk



About the property

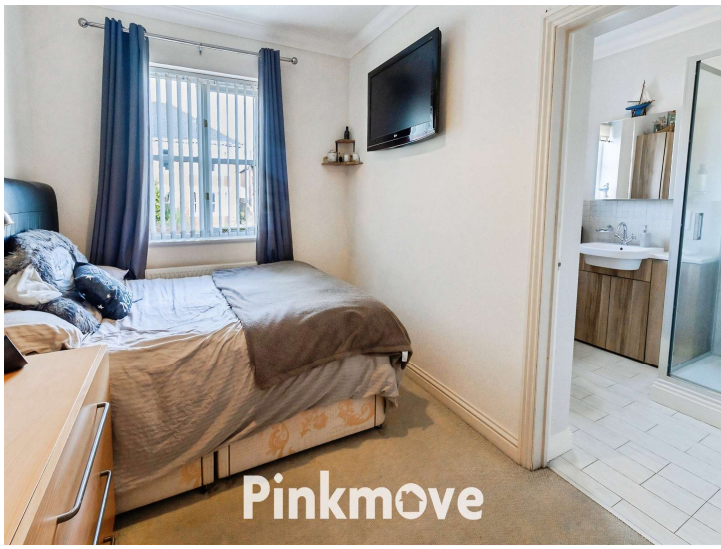
This beautifully presented two-bedroom apartment is set over approx. 702 sq foot and is situated on the sought-after and idyllic Gold Tops in Newport, close to the Civic Centre and offers comfortable living in a peaceful setting just moments from the city centre.

The building itself comprises of twelve apartments, set within well-maintained gardens, surrounded by mature trees, creating a tranquil and private environment. The welcoming and substantial lounge features a large picture window which allows an abundance of natural light to flood the space, creating an inviting setting. A compact yet modern kitchen provides a practical and stylish area for everyday cooking, while the contemporary family bathroom serves the home with clean and efficient design. Both bedrooms are generous doubles, with the master bedroom benefiting from a private ensuite shower room. The thoughtful layout, with each bedroom effectively having access to its own bathroom facilities, makes the property particularly well-suited to accommodating visitors in comfort.

There is allocated parking space to the rear, with additional visitor parking to the front. The property is within a comfortable walk of Newport city centre, offering a wide array of amenities including coffee shops, restaurants, and retail options. The location also provides easy access to The Ridgeway, a highly popular spot known for its stunning views, walking routes, and café, making it ideal for dog walkers and those who enjoy outdoor leisure.

Excellent transport links are close by, with Newport Train Station providing direct routes to Cardiff, Bristol and London, alongside easy access to the M4 motorway for commuters.





Accommodation

Lounge/Diner

15' 1" x 15' 9" (4.60m x 4.80m)
Max Measurements

Kitchen

9' 7" x 7' (2.92m x 2.13m)

Bathroom

9' 1" x 6' 6" (2.77m x 1.98m)

Bedroom 1

12' 6" x 8' 3" (3.81m x 2.51m)

En-Suite

6' 11" x 6' 3" (2.11m x 1.91m)

Bedroom 2

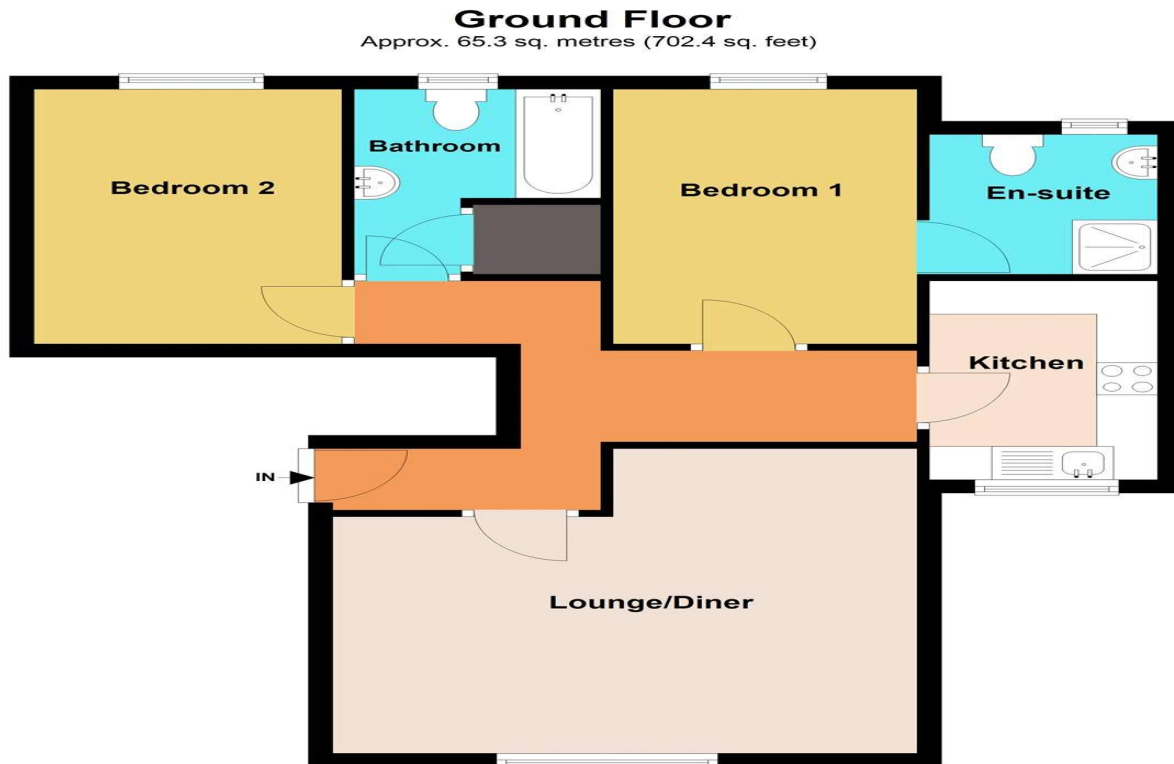
12' 3" x 8' 4" (3.73m x 2.54m)

01633 746088

team@pinkmove.co.uk

Pinkmove

Floorplan



Important Information

Note while we endeavour to make our sales details accurate and reliable, if there is any point which is of particular interest to you, please contact the office and we will be pleased to confirm the position for you. We have not personally tested any apparatus, equipment, fixtures, fittings or services and cannot verify they are in working order or fit for their purposes. Nothing in these particulars is intended to indicate that carpets or curtains, furnishings or fittings, electrical goods (whether wired or not). Gas fires or light fittings or any other fixtures not expressly included form part of the property offered for sale. This computer generated Floorplan, if applicable, is intended as a general guide to the layout and design of the property. It is not to scale and should not be relied upon for dimensions. Tenure: We cannot confirm the tenure of the property as we have not had access to the legal documents. The buyer is advised to obtain verification from their solicitor or surveyor.

Peter Alan Limited is registered in England and Wales under company number 2073153, Registered Office is Cumbria House, 16-20 Hockliffe Street, Leighton Buzzard, Bedfordshire, LU7 1GN. VAT Registration Number is 500 2481 05. For activities relating to regulated mortgages and non-investment insurance contracts, Peter Alan Limited is an appointed representative of Connells Limited which is authorised and regulated by the Financial Conduct Authority. Connells Limited's Financial Services Register number is 302221. Most buy-to-let

