



418 Lymington Road, Christchurch BH23 5HE

£165,000

Mitchells

1963 — TODAY



Lymington Road, Christchurch

An immaculately presented one bedroom apartment situated at the back of the block in the heart of Highcliffe town centre, benefiting from a share of freehold. This very smart apartment would suit a first time buyer or make an ideal investment buy.



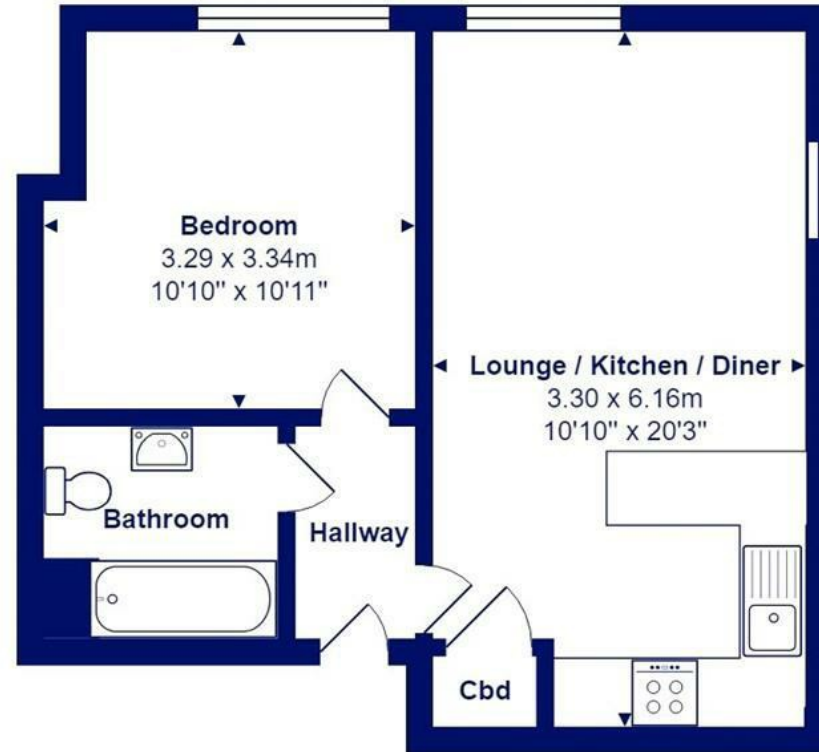
The Property

- A beautifully presented one bedroom first floor apartment (no lift)
- Bright and airy living/dining/kitchen
- Kitchen with quality integrated appliances
- Gas fired central heating & upvc double glazing
- Modern bathroom fittings
- There is a lockable communal bike store
- Maintenance £1800 p/a
- 6 years new build warranty remaining
- Shared freehold, thus no ground rent payable
- Remainder of 999 year lease





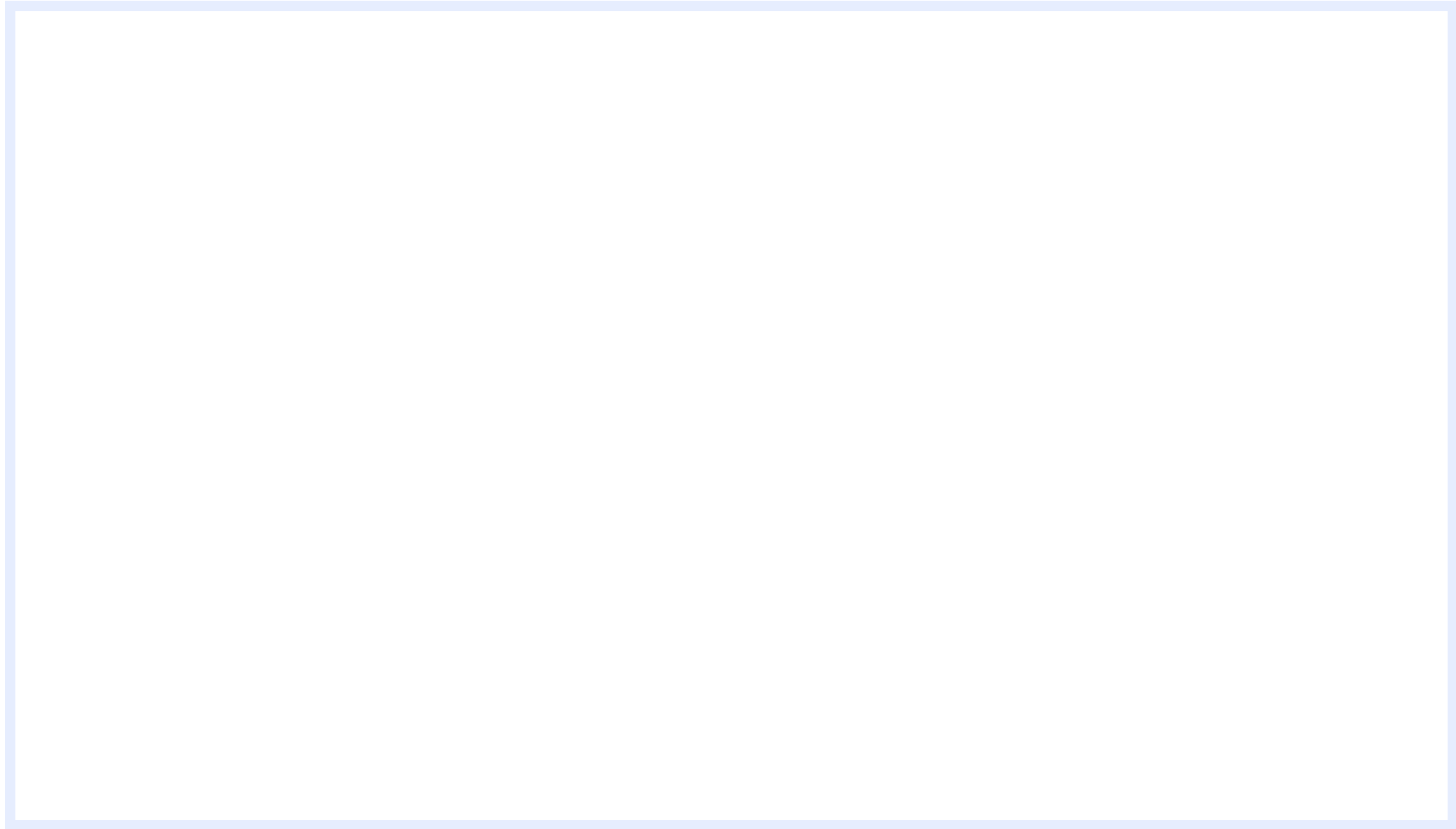
Location



Total Area: 38.3 m² ... 412 ft²

All measurements are approximate and for display purposes only





www.mitchells.uk.com
Highcliffe@mitchells.uk.com
01425 272206

Highcliffe
284 Lymington Road
Highcliffe
Christchurch
BH23 5ET

