



## Clapham Park Road, SW4

### £500,000

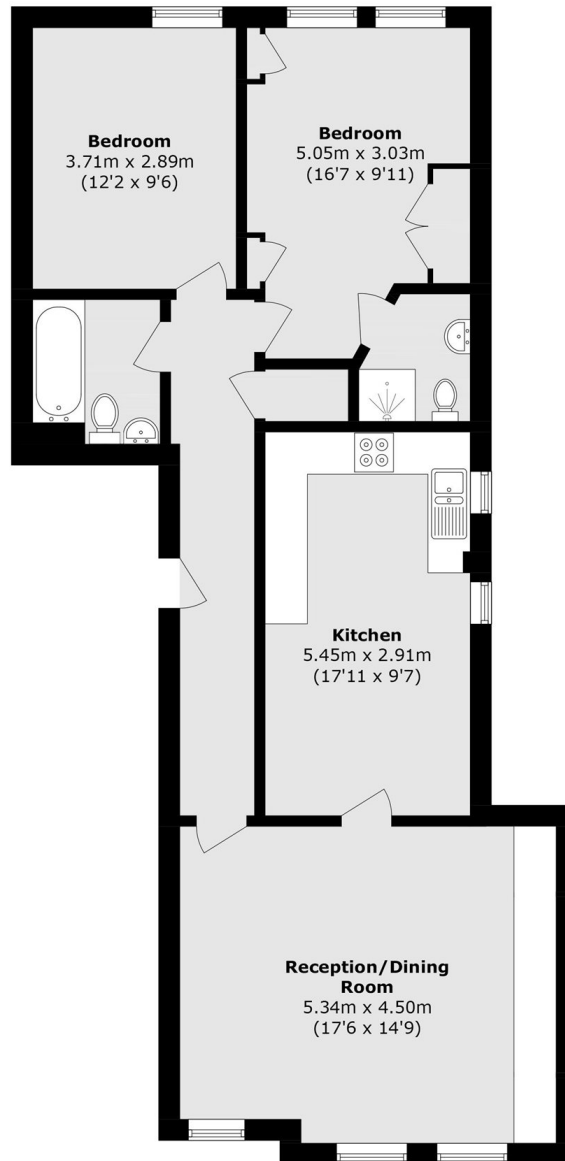
This attractive third floor apartment is situated within a small-scale, private development, extends to an impressive 880 sq.ft and has allocated off street parking. The naturally bright accommodation includes a large reception room, a separate, well equipped kitchen/breakfast room, two double bedrooms and two bathrooms.

Clapham Park Road is ideally situated for the many shops, bars and restaurants of the Abbeville Village and Clapham Old Town, along with the wide open spaces of Clapham Common and its Underground station (Northern Line).

### Features

- Lateral Apartment
- Large Reception
- Separate Kitchen
- Two Double Bedrooms
- Two Bathrooms
- Allocated Parking

# Clapham Park Road, London, SW4



Total area (approx.): 82.5 sq. m (888.0 sq. ft)