



Pinkmove

Chepstow Road Offers in the Region of £260,000

- OPEN PLAN KITCHEN/DINER
- GENEROUS TIERED GARDEN
- FOUR DOUBLE BEDROOMS
- EXCELLENT PUBLIC TRANSPORT LINKS
- GOOD CONDITION
- EPC Rating: D



 4  2  1

Pinkmove

01633 746088
team@pinkmove.co.uk



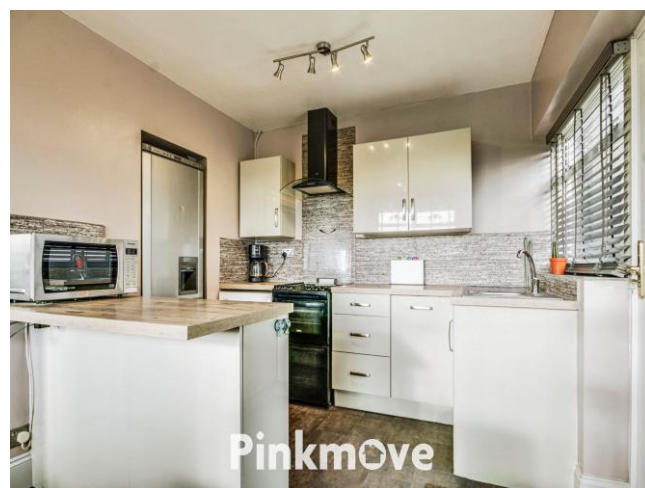
About the property

This beautifully presented semi-detached family home offers spacious, modern living arranged over three well-designed floors. Set in an elevated position, it enjoys attractive views and features a generous tiered rear garden with a large patio—perfect for entertaining or relaxing outdoors.

Inside, the property boasts a bright and inviting living room with a stylish feature fireplace, creating a warm focal point. The sleek high-gloss kitchen provides ample storage, a breakfast area, and direct access to the rear garden, blending indoor comfort with outdoor convenience.

The first-floor hosts two well-proportioned bedrooms and a contemporary family bathroom. The top floor offers two additional bedrooms and a practical shower room, making it ideal for growing families, guests, or flexible use such as a home office. Externally, the tiered rear garden provides plenty of space for leisure, play, or gardening, while the low-maintenance front garden enhances overall kerb appeal.

Located in a desirable area with excellent public transport links and a range of nearby amenities, this property combines style, space, and practicality—an ideal choice for families seeking a well-connected and beautifully maintained home.





Accommodation

Living Room

14' 9" x 14' 8" (4.50m x 4.47m)

Kitchen/Diner

14' 9" x 9' (4.50m x 2.74m)

Bedroom 1

15' x 10' 11" (4.57m x 3.33m)

Bedroom 2

11' 7" x 17' 11" (3.53m x 5.46m)

Bathroom

6' 6" x 8' 8" (1.98m x 2.64m)

Bedroom 3

11' 10" x 9' 9" (3.61m x 2.97m)

Bedroom 4

11' 10" x 9' 8" (3.61m x 2.95m)

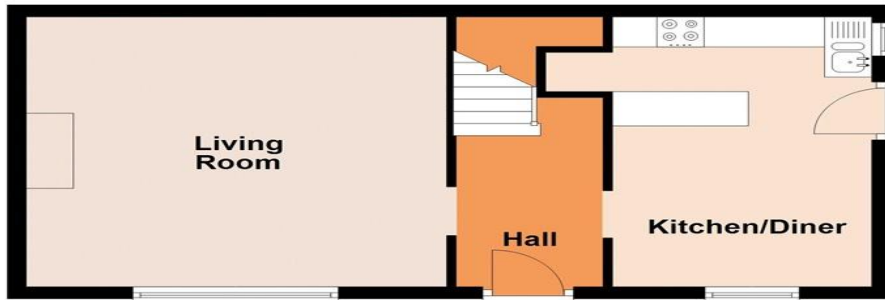
Shower Room

6' 4" x 6' (1.93m x 1.83m)

Floorplan

Ground Floor

Approx. 40.3 sq. metres (433.5 sq. feet)



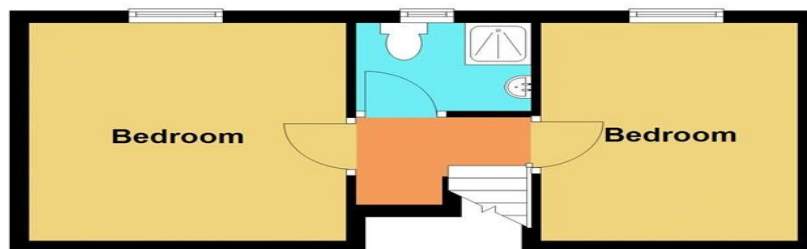
First Floor

Approx. 42.0 sq. metres (452.2 sq. feet)



Second Floor

Approx. 27.9 sq. metres (300.3 sq. feet)



Total area: approx. 110.2 sq. metres (1186.0 sq. feet)

Important Information

Note while we endeavour to make our sales details accurate and reliable, if there is any point which is of particular interest to you, please contact the office and we will be pleased to confirm the position for you. We have not personally tested any apparatus, equipment, fixtures, fittings or services and cannot verify they are in working order or fit for their purposes. Nothing in these particulars is intended to indicate that carpets or curtains, furnishings or fittings, electrical goods (whether wired or not). Gas fires or light fittings or any other fixtures not expressly included form part of the property offered for sale. This computer generated Floorplan, if applicable, is intended as a general guide to the layout and design of the property. It is not to scale and should not be relied upon for dimensions. Tenure: We cannot confirm the tenure of the property as we have not had access to the legal documents. The buyer is advised to obtain verification from their solicitor or surveyor.

Peter Alan Limited is registered in England and Wales under company number 2073153, Registered Office is Cumbria House, 16-20 Hockliffe Street, Leighton Buzzard, Bedfordshire, LU7 1GN. VAT Registration Number is 500 2481 05. For activities relating to regulated mortgages and non-investment insurance contracts, Peter Alan Limited is an appointed representative of Connells Limited which is authorised and regulated by the Financial Conduct Authority. Connells Limited's Financial Services Register number is 302221. Most buy-to-let