



RODNEY PLACE, SW19

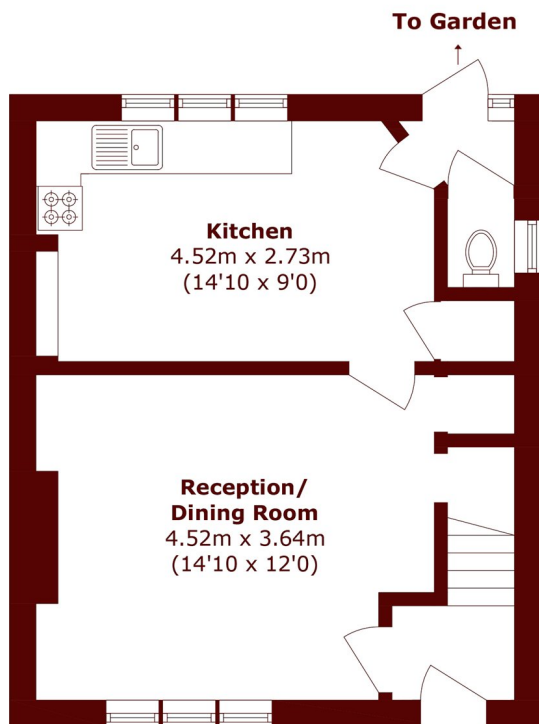
£600,000

Three bedroom terraced house requiring updating throughout. With scope to extend the ground floor (STPP), this property offers an incoming buyer the perfect opportunity to create a wonderful home.

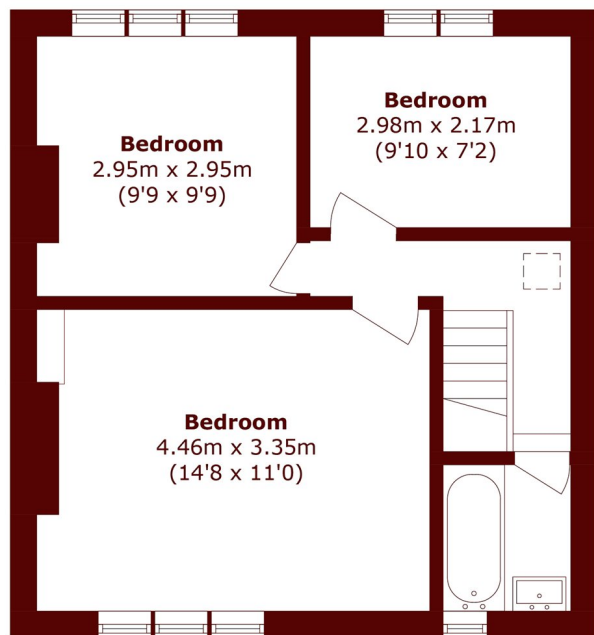
Midi-terrace house
Requires updating
Scope to extend (stpp)

Three bedrooms
No onward chain
Energy rating: d

STEP INSIDE RODNEY PLACE



Ground Floor



First Floor

Total area (approx.): 75.2 sq. m (809.3 sq. ft)

Wimbledon
020 8879 6660

Energy Rating: D We aim to make our particulars both accurate and reliable. However, they are not guaranteed; nor do they form part of an offer or contract. If you require clarification on any points then please contact us, especially if you're traveling some distance to view. Please note that appliances and heating systems have not been tested and therefore no warranties can be given as to their good working order

**MARSH &
PARSONS**