



Key Features

- ◆ One-bedroom, first-floor apartment
- ◆ Convenient Upperton Location
- ◆ Close to hospital
- ◆ Short drive from town centre
- ◆ Beautifully presented
- ◆ EPC rating B



Lewes Road, Eastbourne

£900 PCM



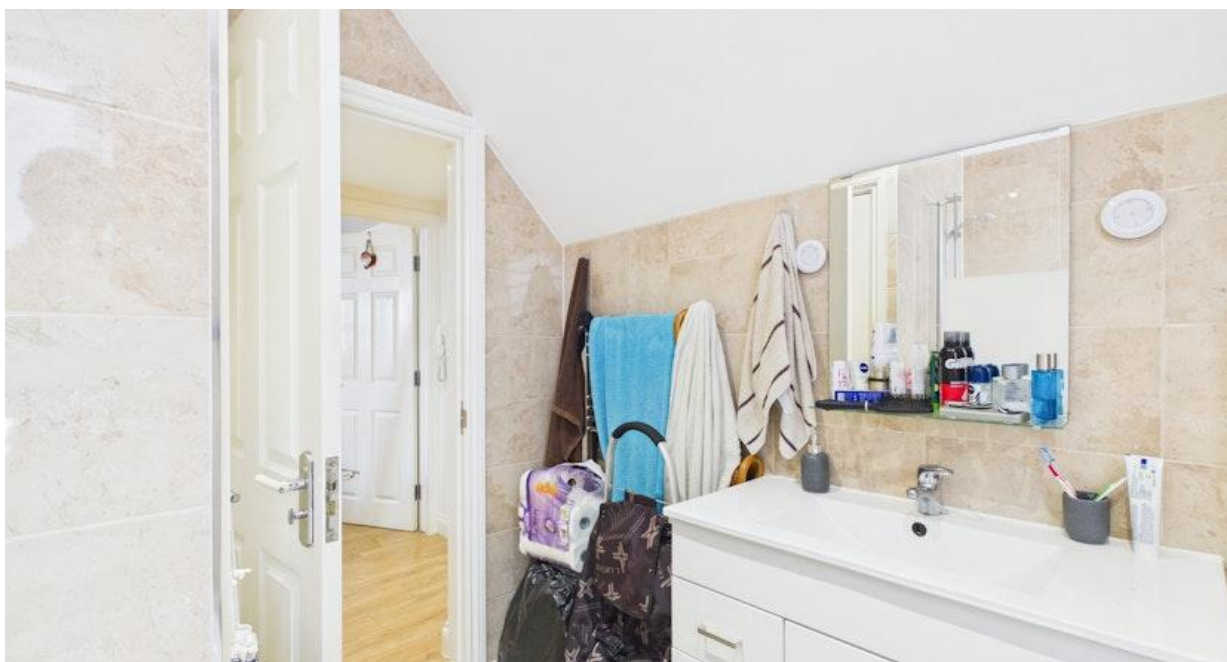
Northwood are delighted to welcome to market this beautiful one-bedroom, first-floor apartment in the popular Upperton area of Eastbourne.

Accommodation comprises: modern, open-plan kitchen/living room with integrated fridge-freezer, good-sized double bedroom and bathroom with shower over bath.

Further benefits include: laminate flooring, gas central heating and double-glazing.

Located close to Eastbourne District General Hospital with easy access to Eastbourne town centre, this fantastic top floor apartment is perfectly located for people looking to make the most of life on the sunshine coast.





Please view our immersive virtual tour to fully appreciate this fantastic property:
<https://tour.giraffe360.com/13fa9ce41bd44e7b853362abf5bad390>

Mobile Phone Coverage and Broadband speeds can be checked on the Ofcom website:
<https://checker.ofcom.org.uk/>

Council Tax Band B: £2064

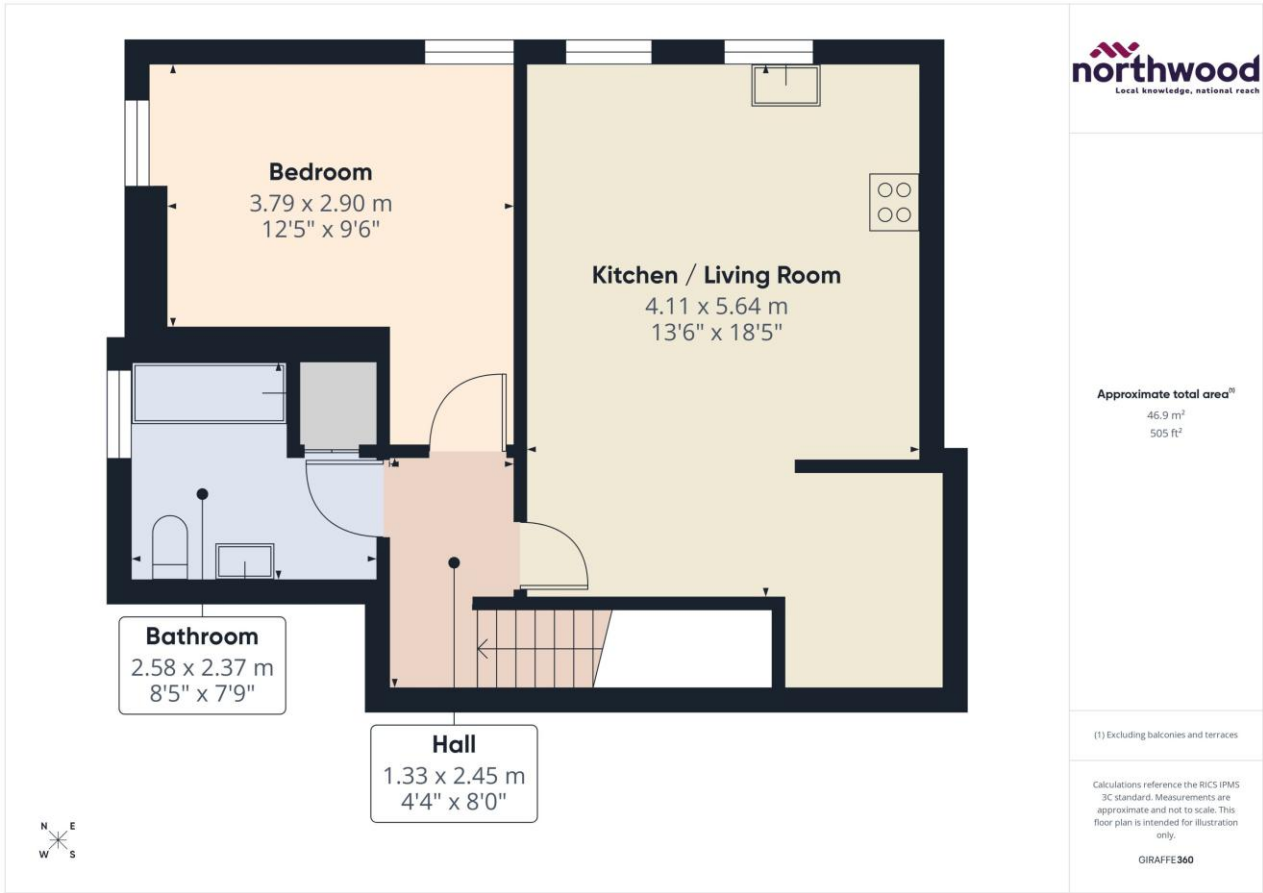
Holding Deposit: £205.00 (equivalent to one week's rent)
Full Deposit: £1035.00 (holding deposit + equivalent of four weeks' rent)
1st month's rent + Full Deposit: £1935.00

Total household income must exceed £27,000.00 to be considered for this property.

This property is managed by Northwood, should a maintenance issue arise, it can be reported 24 hours a day via our website.







SEE MORE ONLINE

Northwood

81-83 South Street
Eastbourne
BN21 4LR
01323 744544
eastbourne@northwooduk.com

