

*Symonds  
Taylor*

**122 Rokeby Terrace, Heaton**

Newcastle Upon Tyne

Offers Over **£185,000**





## 122 Rokeby Terrace

Heaton, Newcastle Upon Tyne

This larger style end of terrace ground floor Tyneside apartment will have to be viewed to be appreciated. With 2 double bedrooms this is a generous property with a south facing rear courtyard which is all finished to a great standard by the present owners and is ready to move straight into.

### Accommodation comprises:

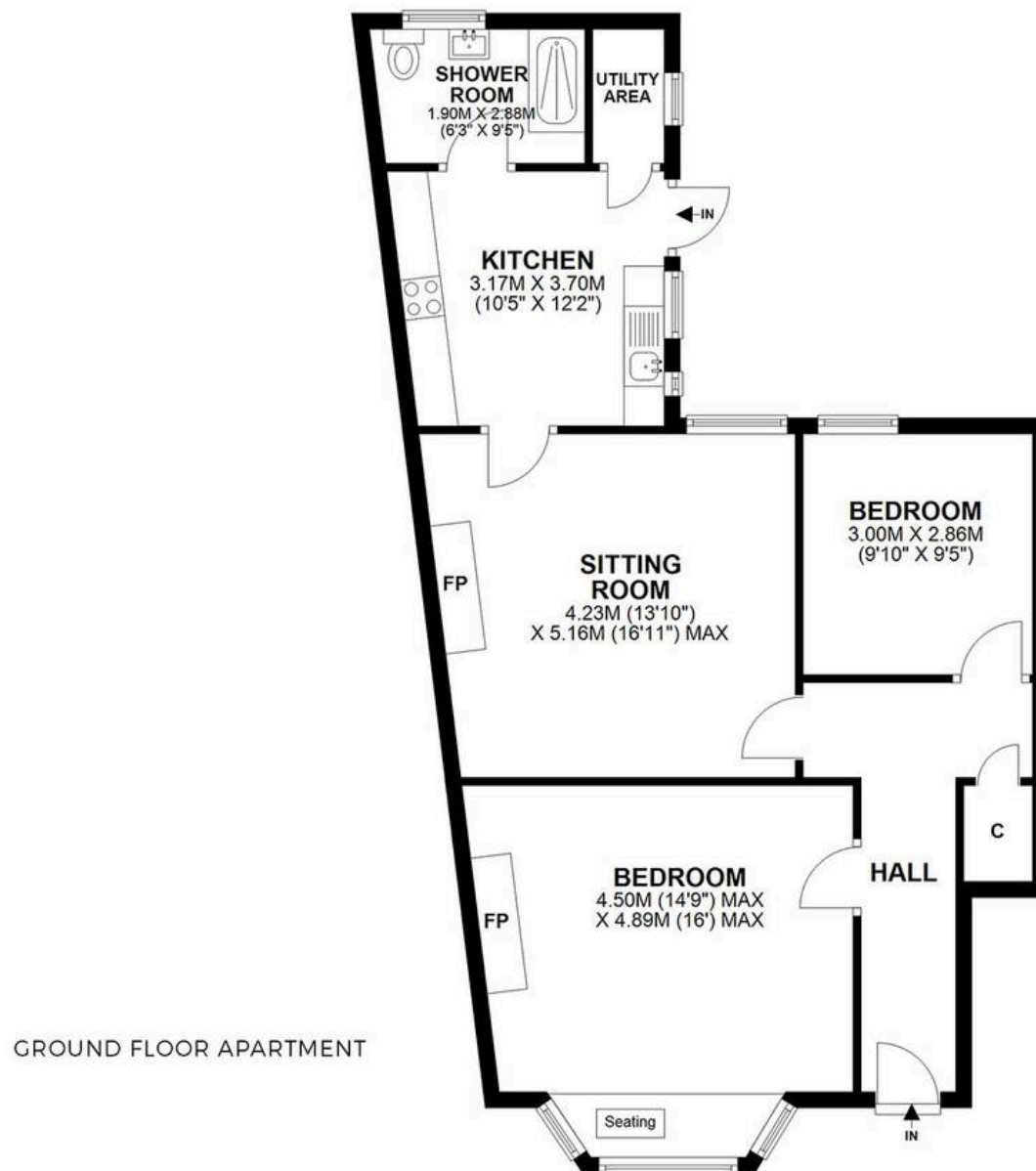
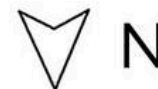
**Ground floor:** Entrance hallway, principal bedroom, bedroom 2, sitting room, kitchen, shower room/wc, utility cupboard.

**Outside:** Front town garden, rear south facing courtyard, car port, off street parking.

Council Tax band: A

Tenure: Leasehold





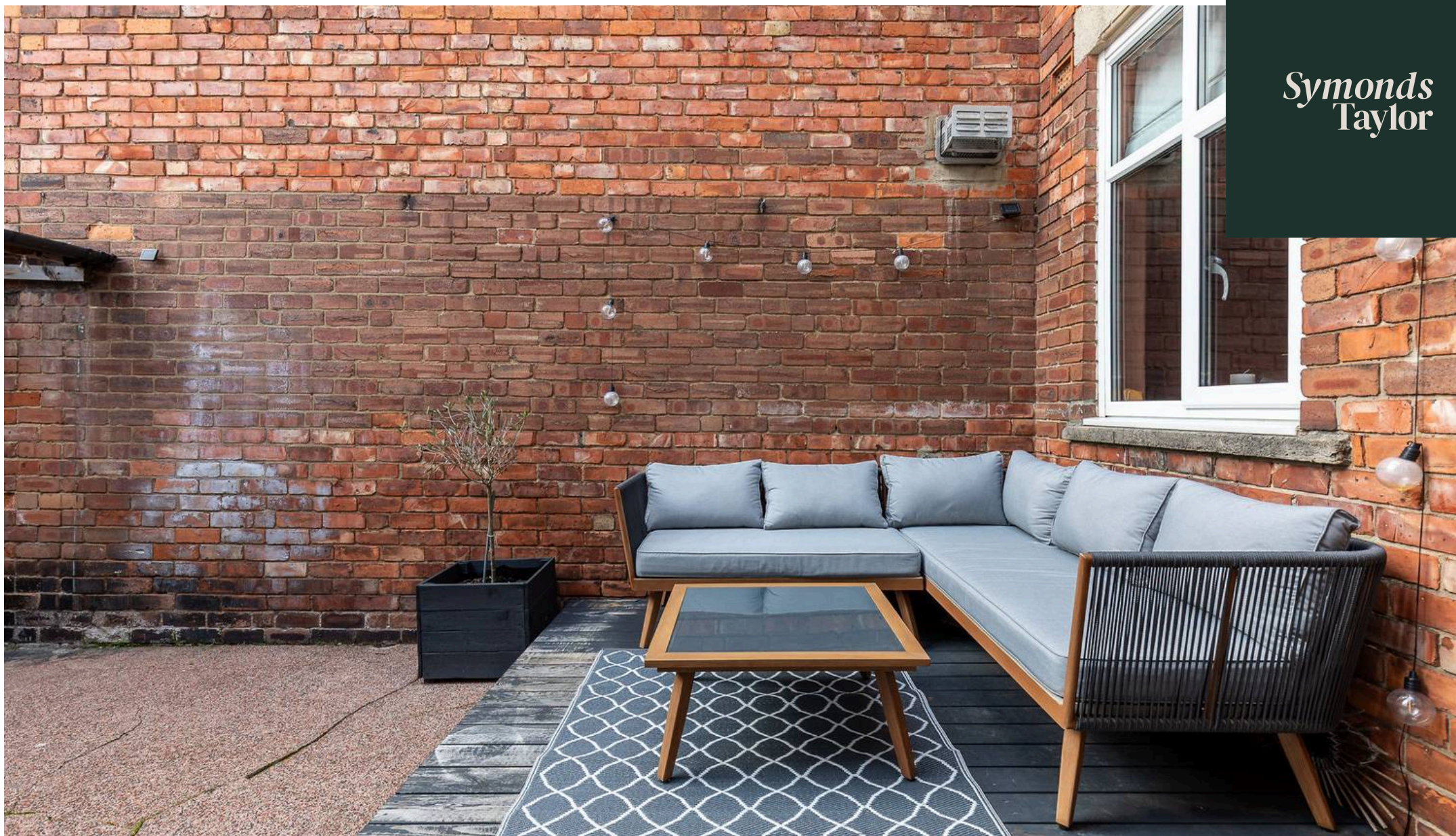
GROUND FLOOR APARTMENT

**122 ROKEBY TERRACE, HEATON, NE6 5SU**

APPROXIMATE GROSS INTERNAL AREA 74 SQ M 795 SQ FT - NOT TO SCALE - FOR ILLUSTRATIVE PURPOSES ONLY  
All measurements and fixtures including doors and windows are approximate and should be independently verified.



*Symonds  
Taylor*



**Symonds Taylor**

101 St. Georges Terrace, Jesmond – NE2 2DN

0191 338 9999 • [hello@symondstaylor.co.uk](mailto:hello@symondstaylor.co.uk) • [www.symondstaylor.co.uk](http://www.symondstaylor.co.uk)

All descriptions, plans or references to condition are given in good faith only. Whilst every endeavour is made to ensure accuracy, please check with us on any points of especial importance to you.