



Waldegrave Road, TW11

£325,000

This spacious apartment is located in this very pretty double fronted Victorian building. Perfectly located for Teddington High Street and transport links into London.

This home is offered with no onward chain and ready for you to move straight in. The property consists of a light and spacious reception room which overlooks the large communal gardens at the rear. There is a modern kitchen and bathroom with shower. The bedroom is a great size along with fully fitted floor to ceiling hand built wardrobes.

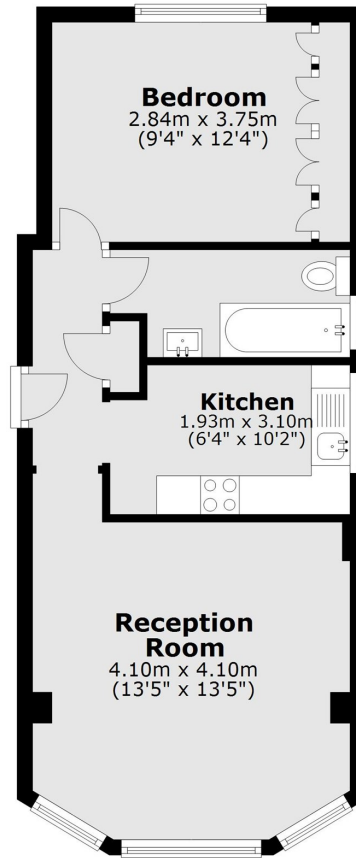
Waldegrave Road is close to Teddington town centre, excellent for transport by train or bus. Royal Bushy Park and The River Thames are easy to reach along with Teddington High Street.

Features

- First Floor
- Victorian Building
- No Onward Chain
- Double Bedroom
- Communal Garden
- Central Location

Waldegrave Road, Teddington, TW11

First Floor



Total area: approx. 41.9 sq. metres (451.0 sq. feet)