



**Pleasance Road, SW15**

**£875,000**

**Dexters**



## Pleasance Road, SW15

A beautifully presented and thoughtfully extended two-bedroom home offering approximately 845 sq. Ft. Of stylish living space, ideally positioned on a quiet residential road in Putney.

Finished to an exceptional standard throughout, the property centres around a stunning open-plan kitchen, dining and living space. The contemporary kitchen features bespoke shaker-style cabinetry, quartz worktops, integrated appliances and a generous central island with additional storage and wine shelving. Vaulted ceilings, skylights and full-width bi-fold doors flood the space with natural light and create a seamless connection to the landscaped rear garden, providing an ideal setting for both everyday living and entertaining.

The ground floor also benefits from a separate reception room and a guest cloakroom. Upstairs, there are two well-proportioned double bedrooms and a modern family bathroom.

Pleasance Road is a sought-after location close to the shops, cafés and restaurants of Putney High Street, as well as the open spaces of Putney Heath and Richmond Park. Putney mainline station and East Putney Underground station are both within easy reach, providing excellent connections into Central London.

### Features

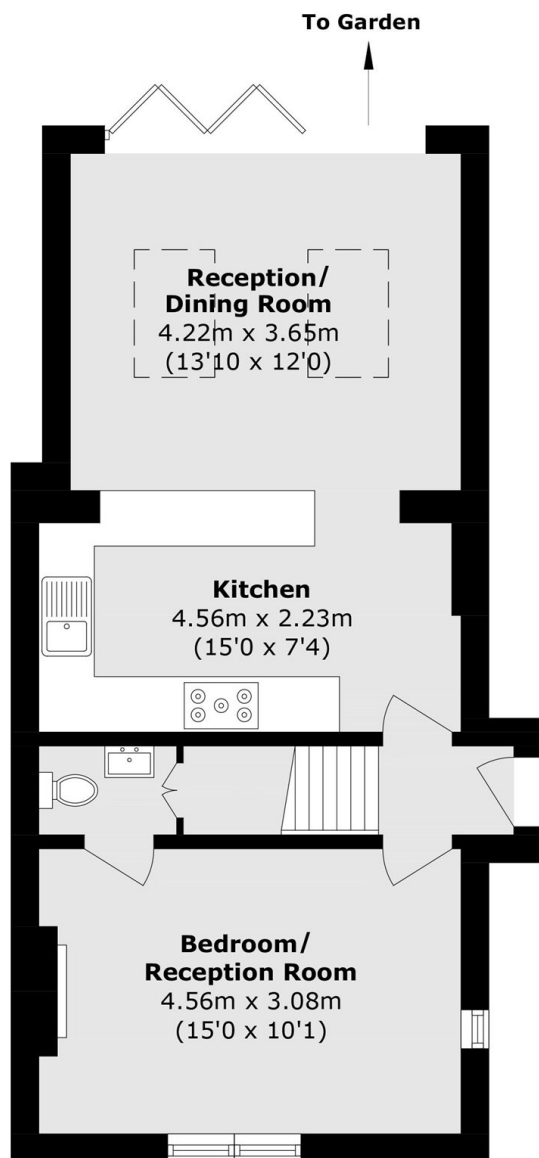
- Extended Large Garden
- Two Bedrooms
- W/C
- Freehold
- End of Terrace



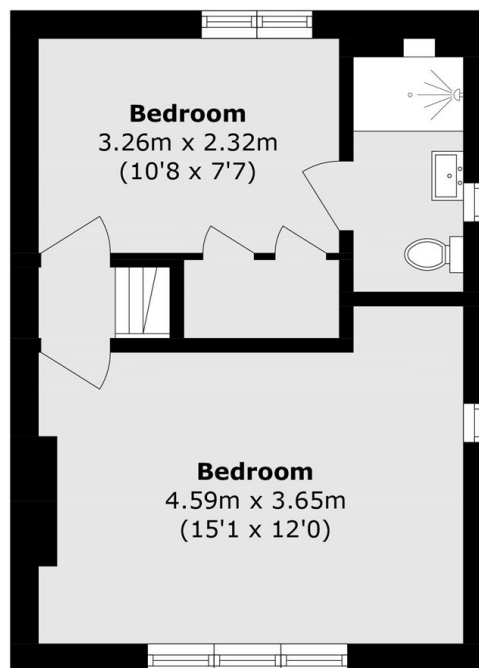




# Pleasance Road, London, SW15



**Ground Floor**



**First Floor**

Total area (approx): 78.5 sq. m (844.9 sq. ft)