



BRACKENBURY ROAD, W6

£475,000

A spacious one-bedroom flat set on the raised ground floor of an attractive Victorian terrace in the heart of Brackembury Village.

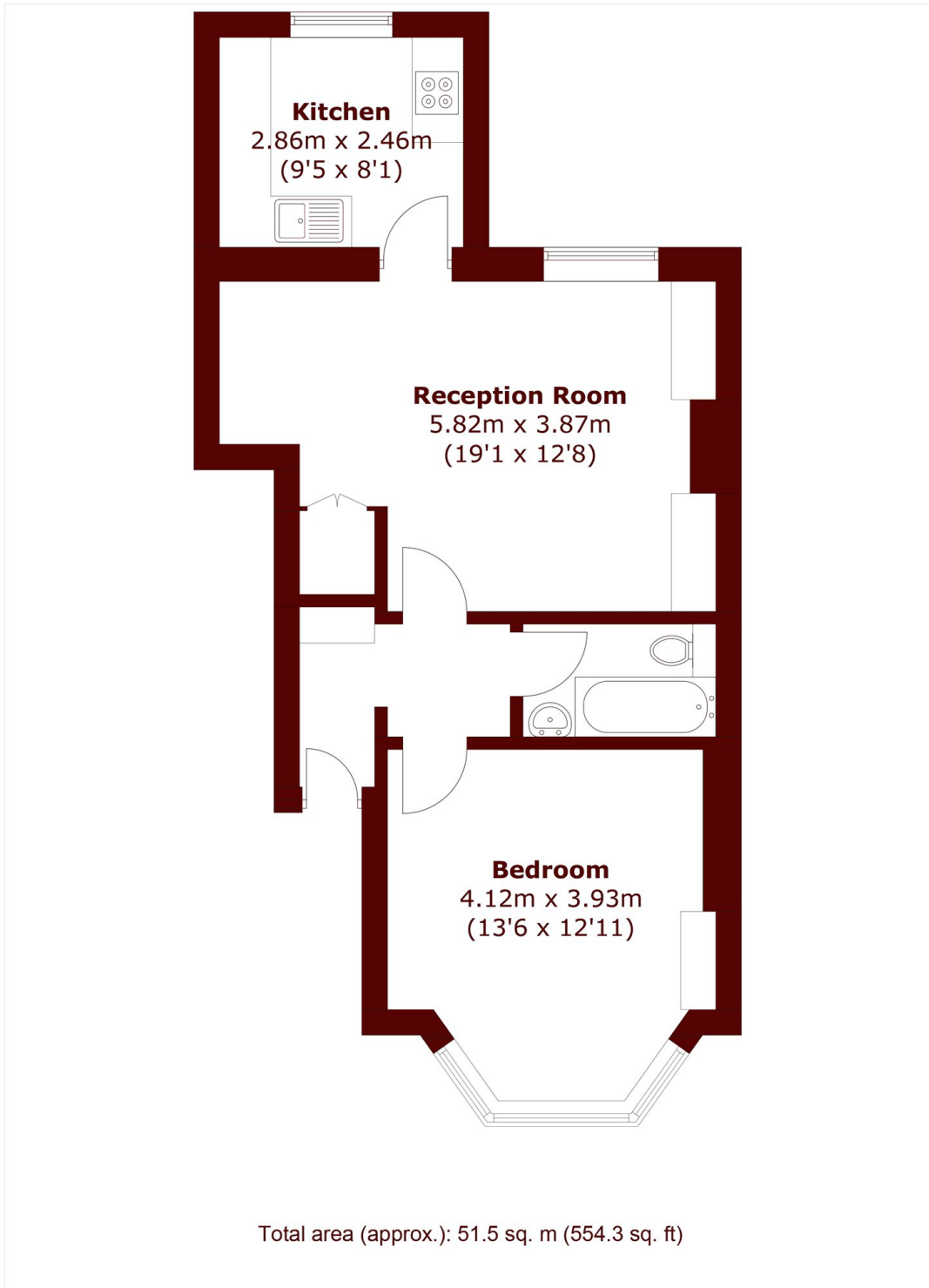
One Bedroom
Separate Kitchen
No Onwards Chain

Potential To Modernise
High Ceilings
Quiet Location

@marshandparsons
marshandparsons.co.uk

MARSH &
PARSONS

STEP INSIDE BRACKENBURY ROAD



Brook Green
020 7605 7765

Energy Rating: We aim to make our particulars both accurate and reliable. However, they are not guaranteed; nor do they form part of an offer or contract. If you require clarification on any points then please contact us, especially if you're traveling some distance to view. Please note that appliances and heating systems have not been tested and therefore no warranties can be given as to their good working order

**MARSH &
PARSONS**