



**Modern
Auction**

**£180,000
Leasehold**

2x  1x  1x 

**Copperfields, Laindon,
Basildon, Essex, SS15**



Main features

- 2 bedroom first floor flat
- Perfect for a first time buyer or an investor
- Allocated parking
- Lounge/dining room
- 1 mile from Laindon mainline train station into Fenchurch Street

Accommodation

FIRST FLOOR

Entrance

Bathroom

Bedroom 1: 10'2 x 9'9 (3.10m x 2.97m)

Bedroom 2: 10'2 x 7'5 (3.10m x 2.26m)

Kitchen: 8'8 x 6'3 (2.64m x 1.91m)

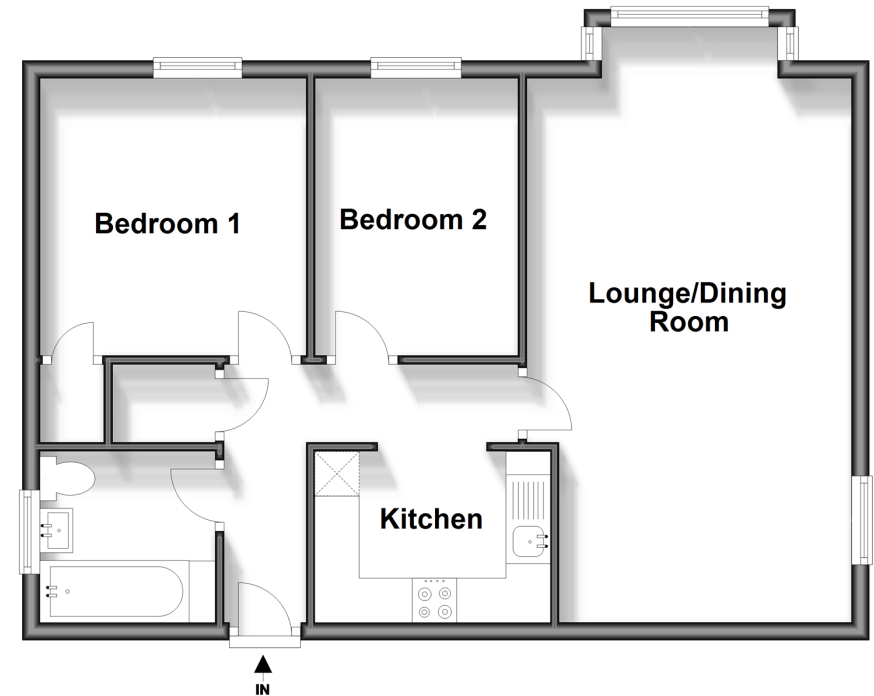
Lounge/Dining Room : 22'9 x 11'7 (6.94m x 3.53m)

OUTSIDE

Allocated Parking

First Floor

Approx. 57.2 sq. metres (615.8 sq. feet)



Call Basildon - 01268 293993 ■ douglasallen.co.uk

- Legal advice should be taken to verify fixtures/fittings, planning, alterations and/or lease details
- Appliances & services are untested, dimensions are approximate and floor plans are not to scale



50508919/20250705/MB/GW