



2 Bedrooms | 1 Bathroom | 1 Reception Room

Chandler Court | Holmwood Gardens | Wallington | SM6 0HN

**Offers over £300,000**

**LOFT**

# Chandler Court | Holmwood Gardens | Wallington | SM6 0HN

- Ground floor apartment located in the sought after Chandler Court
- Direct access to private patio and overlooking beautiful communal gardens
- Garage en bloc
- Large reception room with space for lounging and dining
- Separate kitchen space with room for all appliances
- Two bedrooms and separate bathroom
- Plenty of storage throughout
- Only a few minutes stroll from Wallington High Street with all the amenities including the railway station, array of shops, cafes and restaurants

## Ground Floor

### Hallway

### Reception Room

19'3 x 12'9 (5.87m x 3.89m)

### Kitchen

10'5 x 6'9 (3.18m x 2.06m)

### Bedroom

16'1 x 8'8 (4.90m x 2.64m)

### Bedroom

12'9 x 7'4 (3.89m x 2.24m)

### Bathroom

### Outside

### Terrace

10'6 x 8'6 (3.20m x 2.59m)

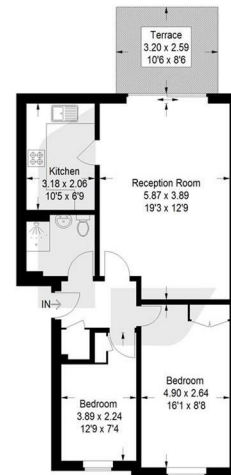
### Garage

### Communal Gardens



#### Chandler Court, SM6

Approximate Gross Internal Area  
60.9 sq m / 656 sq ft



#### Ground Floor

This plan is for layout guidance only. Not drawn to scale unless stated. Windows and door openings are approximate. Whilst every care is taken in the preparation of this plan, please check all dimensions, shapes and compass bearings before making any decisions reliant upon them. (ID1287197)



EPC Rating: C

23a High Street  
Purley  
Surrey  
CR8 2AF  
0208 660 8070  
hello@loft-estates.co.uk