



Hillside Gardens, N6

£1,550,000

Dexters



Hillside Gardens, N6

A stylishly renovated mid-century architect designed three bedroom house with an abundance of natural light, a modern fitted kitchen and a reception and dining area overlooking the south west garden.

Retaining a number of original design features including a double volume open tread staircase, the property forms part of a sought after development designed circa 1958 by Harley Sherlock.

As part of the Southwood Hall Estate, the houses all have a private garden and back on to a secure communal garden which is a delightful and tranquil oasis.

The property comes complete with two bathrooms, a separate study, a ground-floor utility room, and a guest cloakroom.

Hillside Gardens is exceptionally well placed for access to Highgate Woods and Highgate underground station whilst the delights of the village are at the end of Southwood Lane.

Features

- Three Bedrooms
- Reception Dining Room
- Modern Kitchen
- Off-Street Parking
- Ground Floor Study
- South West Garden

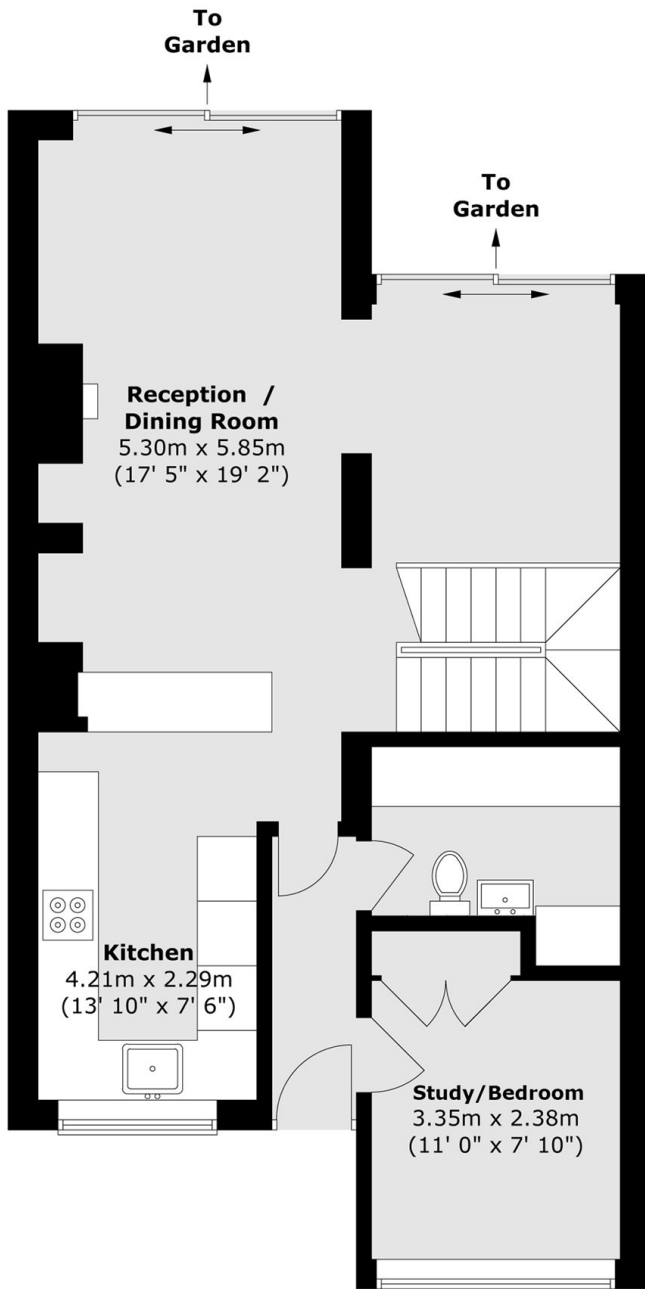




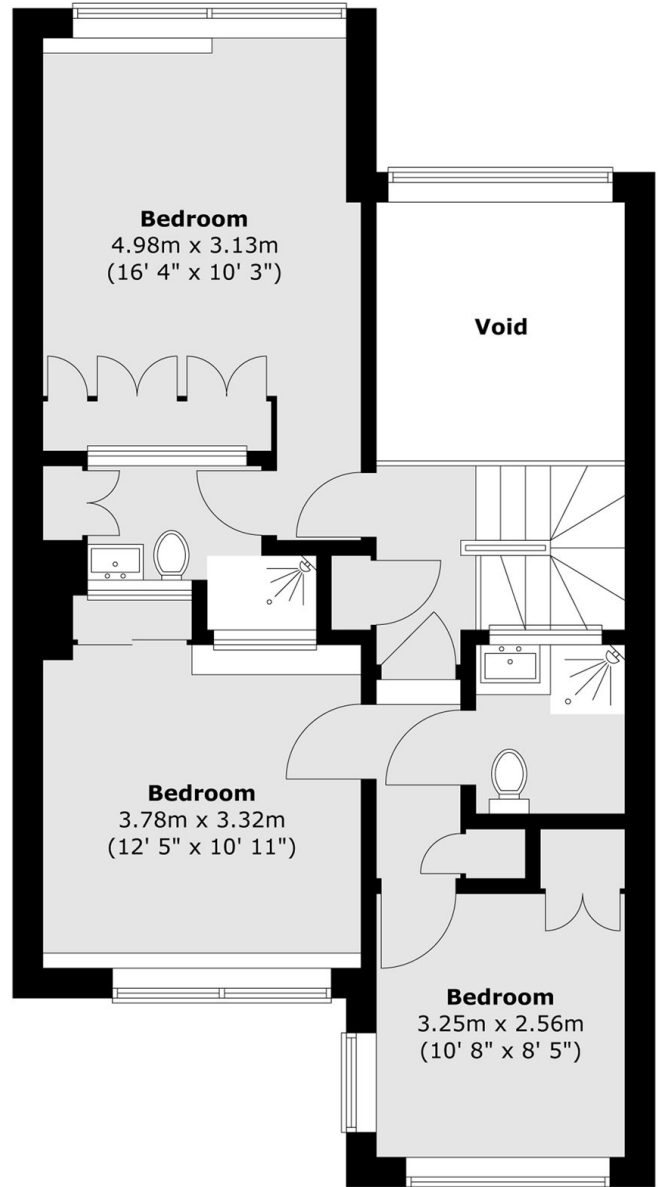


Hillside Gardens, London, N6

Raised Ground Floor



First Floor



Total area (approx.) : 104.8 sq. m (1128 sq. ft)
(Excluding void)