



## 27 Frensham Road

Lower Bourne, Farnham, GU10 3PY

A well presented 3 bedroom detached character family house with 2 reception rooms, garden and parking located in the heart of the Bourne.

Situated close to the local amenities in the Bourne including South Farnham Infant school, chemist, convenience store, public house, recreation ground and Bourne woods.

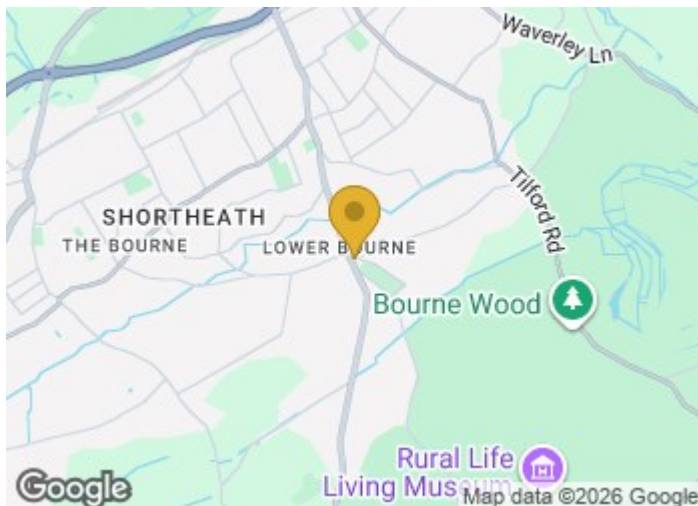
**Price Guide £645,000**

# 27 Frensham Road

Lower Bourne, Farnham, GU10 3PY



- Entrance hall
- Dining room
- 3 bedrooms , en suite shower to bedroom 1
- Close to the Bourne's amenities
- Cloakroom and utility room
- Modern fitted kitchen
- Family bathroom with bath and separate shower
- Sitting room
- Basement room
- Parking and enclosed garden



[Directions](#)

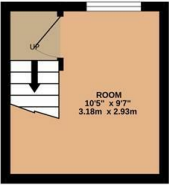
SAT NAV: GU10 3PY





# Floor Plan

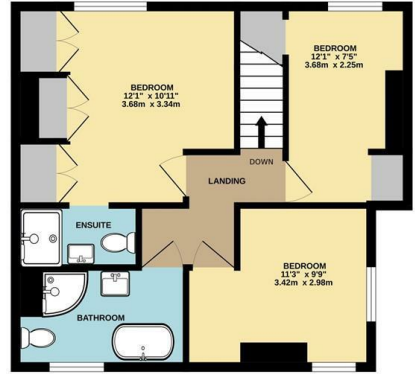
BASEMENT  
100 sq ft. (9.3 sq.m.) approx.



GROUND FLOOR  
486 sq ft. (45.2 sq.m.) approx.



1ST FLOOR  
478 sq ft. (44.4 sq.m.) approx.



TOTAL FLOOR AREA: 1065 sq.ft. (98.9 sq.m.) approx.

Whilst every attempt has been made to ensure the accuracy of the floorplan contained here, measurements of doors, windows, rooms and any other items are approximate and no responsibility is taken for any error, omission or mis-statement. This plan is for illustrative purposes only and should be used as such by any prospective purchaser. The services, systems and appliances shown have not been tested and no guarantee as to their operability or efficiency can be given.  
Made with Metropix ©2026

These particulars, whilst believed to be accurate are set out as a general outline only for guidance and do not constitute any part of an offer or contract. Intending purchasers should not rely on them as statements of representation of fact, but must satisfy themselves by inspection or otherwise as to their accuracy. No person in this firm's employment has the authority to make or give any representation or warranty in respect of the property.

