



2 Bridge Close, Lymm

Lymm

Offers Over £725,000

**GASCOIGNE
HALMAN**

THE AREA'S LEADING ESTATE AGENCY



2 Bridge Close

Lymm, Lymm

Situated in the desirable Bridge Close, Lymm, this bespoke three bedroom detached property offers a superb blend of contemporary living and thoughtful design.

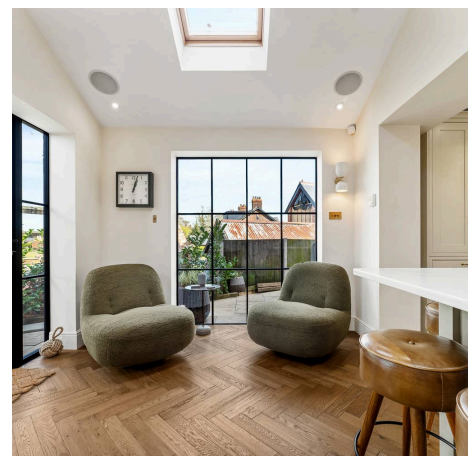
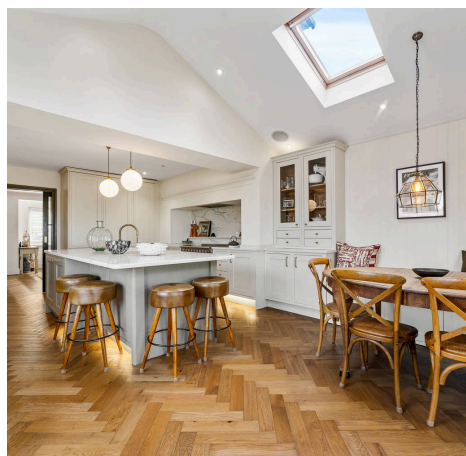
Council Tax band: E

Tenure: Freehold

EPC Energy Efficiency Rating: C

EPC Environmental Impact Rating:

- Bespoke three bedroom detached property
- Luxury open plan kitchen & dining room
- Close to both Oughtrington Primary School and Lymm High School
- Master bedroom with dressing room and en-suite shower room
- Refurbished to a high standard throughout
- Converted garage into office room



2 Bridge Close

Lymm, Lymm

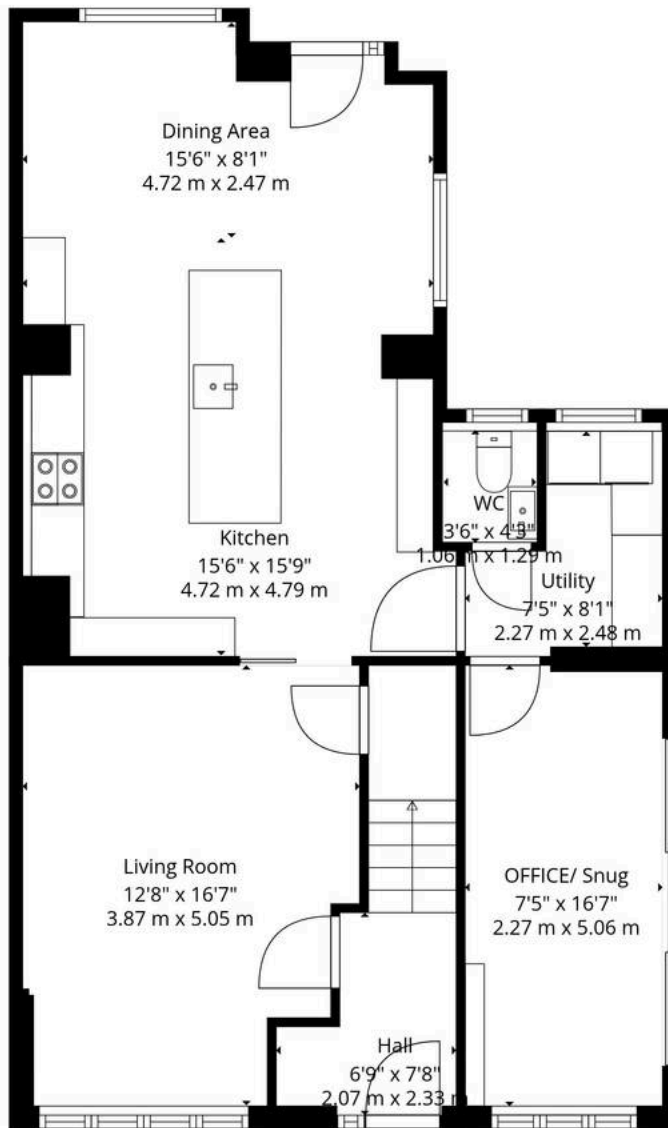
Presented to an exceptional standard throughout, the property has been extensively refurbished to provide a luxurious and comfortable family home. The accommodation comprises a spacious living room, a luxury open plan kitchen and dining area, ideal for both everyday living and entertaining. A converted garage has been thoughtfully transformed into a versatile office space, catering perfectly to modern working needs. The property also benefits from a fitted utility room and downstairs WC for added convenience.

The master bedroom benefits from a stylish dressing room and an en-suite shower room, while two further well proportioned bedrooms and a modern family bathroom complete the upstairs accommodation. Externally, the property enjoys a private and sunny enclosed garden, providing a peaceful outdoor retreat, alongside a driveway to the front for multiple vehicles.

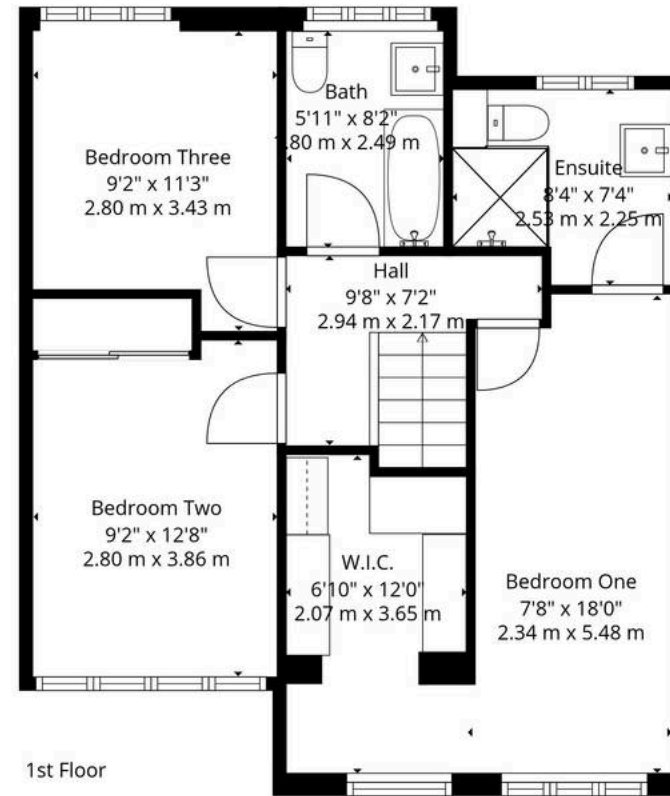
Located within extremely close proximity to both Oughtrington Primary School and Lymm High School, this freehold property is perfectly positioned for families seeking quality education and convenient access to local amenities.

Offered with a guide price of offers over £750,000, this exceptional home represents a rare opportunity to acquire a beautifully presented residence in a sought-after location. Early viewing is highly recommended.





Ground Floor



1st Floor

Total: 1429 sq. Ft, 132 m2
 Ground Floor: 801 sq. Ft, 74 M2, 1st Floor: 628 sq. Ft, 58 m2
 Excluded Areas: Utility: 49 sq. Ft, 5 M2, Walls: 126 sq. Ft, 12 m2

You can include any text here. The text can be modified upon generating your brochure.



THE AREA'S LEADING ESTATE AGENCY